

**SDCBP Antibody (N-term)**  
**Affinity Purified Rabbit Polyclonal Antibody (Pab)**  
**Catalog # AP20056a****Specification**

---

**SDCBP Antibody (N-term) - Product Information**

Application	WB,E
Primary Accession	<a href="#">O00560</a>
Other Accession	<a href="#">O9JI92</a> , <a href="#">O08992</a> , <a href="#">NP_005616.2</a>
Reactivity	Human
Predicted	Mouse, Rat
Host	Rabbit
Clonality	Polyclonal
Isotype	Rabbit IgG
Calculated MW	32444
Antigen Region	1-30

**SDCBP Antibody (N-term) - Additional Information****Gene ID** 6386**Other Names**

Syntenin-1, Melanoma differentiation-associated protein 9, MDA-9, Pro-TGF-alpha cytoplasmic domain-interacting protein 18, TACIP18, Scaffold protein Pbp1, Syndecan-binding protein 1, SDCBP, MDA9, SYCL

**Target/Specificity**

This SDCBP antibody is generated from rabbits immunized with a KLH conjugated synthetic peptide between 1-30 amino acids from the N-terminal region of human SDCBP.

**Dilution**

WB~~1:1000

**Format**

Purified polyclonal antibody supplied in PBS with 0.09% (W/V) sodium azide. This antibody is purified through a protein A column, followed by peptide affinity purification.

**Storage**

Maintain refrigerated at 2-8°C for up to 2 weeks. For long term storage store at -20°C in small aliquots to prevent freeze-thaw cycles.

**Precautions**

SDCBP Antibody (N-term) is for research use only and not for use in diagnostic or therapeutic procedures.

**SDCBP Antibody (N-term) - Protein Information****Name** SDCBP

**Synonyms** MDA9, SYCL

**Function** Multifunctional adapter protein involved in diverse array of functions including trafficking of transmembrane proteins, neuro and immunomodulation, exosome biogenesis, and tumorigenesis (PubMed:[26291527](#)). Positively regulates TGFB1-mediated SMAD2/3 activation and TGFB1-induced epithelial-to-mesenchymal transition (EMT) and cell migration in various cell types. May increase TGFB1 signaling by enhancing cell-surface expression of TGFR1 by preventing the interaction between TGFR1 and CAV1 and subsequent CAV1-dependent internalization and degradation of TGFR1 (PubMed:[25893292](#)). In concert with SDC1/4 and PDCD6IP, regulates exosome biogenesis (PubMed:[22660413](#)). Regulates migration, growth, proliferation, and cell cycle progression in a variety of cancer types (PubMed:[26539120](#)). In adherens junctions may function to couple syndecans to cytoskeletal proteins or signaling components. Seems to couple transcription factor SOX4 to the IL-5 receptor (IL5RA) (PubMed:[11498591](#)). May also play a role in vesicular trafficking (PubMed:[11179419](#)). Seems to be required for the targeting of TGFA to the cell surface in the early secretory pathway (PubMed:[10230395](#)).

**Cellular Location**

Cell junction, focal adhesion. Cell junction, adherens junction. Cell membrane; Peripheral membrane protein. Endoplasmic reticulum membrane; Peripheral membrane protein. Nucleus. Melanosome. Cytoplasm, cytosol. Cytoplasm, cytoskeleton. Secreted, extracellular exosome. Membrane raft. Note=Mainly membrane-associated Localized to adherens junctions, focal adhesions and endoplasmic reticulum. Colocalized with actin stress fibers. Also found in the nucleus. Identified by mass spectrometry in melanosome fractions from stage I to stage IV. Associated to the plasma membrane in the presence of FZD7 and phosphatidylinositol 4,5-bisphosphate (PIP2) (PubMed:27386966).

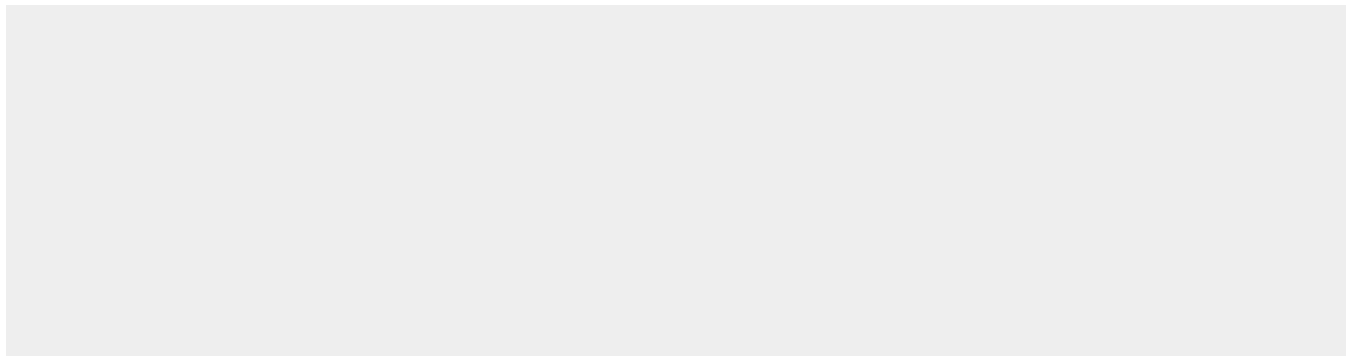
**Tissue Location**

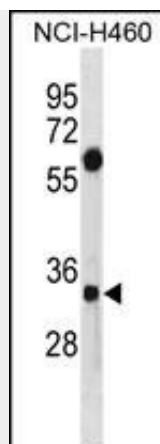
Expressed in lung cancers, including adenocarcinoma, squamous cell carcinoma and small-cell carcinoma (at protein level) (PubMed:25893292). Widely expressed. Expressed in fetal kidney, liver, lung and brain. In adult highest expression in heart and placenta.

**SDCBP Antibody (N-term) - Protocols**

Provided below are standard protocols that you may find useful for product applications.

- [Western Blot](#)
- [Blocking Peptides](#)
- [Dot Blot](#)
- [Immunohistochemistry](#)
- [Immunofluorescence](#)
- [Immunoprecipitation](#)
- [Flow Cytometry](#)
- [Cell Culture](#)

**SDCBP Antibody (N-term) - Images**



SDCBP Antibody (N-term) (Cat. #AP20056a) western blot analysis in NCI-H460 cell line lysates (35ug/lane). This demonstrates the SDCBP antibody detected the SDCBP protein (arrow).

#### **SDCBP Antibody (N-term) - Background**

The protein encoded by this gene was initially identified as a molecule linking syndecan-mediated signaling to the cytoskeleton. The syndecan protein contains tandemly repeated PDZ domains that bind the cytoplasmic, C-terminal domains of a variety of transmembrane proteins. This protein may also affect cytoskeletal-membrane organization, cell adhesion, protein trafficking, and the activation of transcription factors. The protein is primarily localized to membrane-associated adherens junctions and focal adhesions but is also found at the endoplasmic reticulum and nucleus. Alternative splicing results in multiple transcript variants encoding different isoforms. [provided by RefSeq].

#### **SDCBP Antibody (N-term) - References**

Boukerche, H., et al. *Oncogene* 29(21):3054-3066(2010)  
Qian, X.L., et al. *Yi Chuan* 32(3):235-241(2010)  
Hwangbo, C., et al. *Cancer Res.* 70(4):1645-1655(2010)  
Beekman, J.M., et al. *Blood* 114(18):3917-3927(2009)  
Sira, M.M., et al. *Int. Immunol.* 21(9):1013-1023(2009)