

**UCLH5 Antibody (Center)**  
**Affinity Purified Rabbit Polyclonal Antibody (Pab)**  
**Catalog # AP20058c****Specification**

---

**UCLH5 Antibody (Center) - Product Information**

Application	WB,E
Primary Accession	<a href="#">O9Y5K5</a>
Other Accession	<a href="#">NP_057068.1</a>
Reactivity	Human
Host	Rabbit
Clonality	Polyclonal
Isotype	Rabbit IgG
Calculated MW	37607
Antigen Region	136-164

**UCLH5 Antibody (Center) - Additional Information****Gene ID** 51377**Other Names**

Ubiquitin carboxyl-terminal hydrolase isozyme L5, UCH-L5, Ubiquitin C-terminal hydrolase UCH37, Ubiquitin thioesterase L5, UCLH5, UCH37

**Target/Specificity**

This UCLH5 antibody is generated from rabbits immunized with a KLH conjugated synthetic peptide between 136-164 amino acids from the Central region of human UCLH5.

**Dilution**

WB~~1:1000

**Format**

Purified polyclonal antibody supplied in PBS with 0.09% (W/V) sodium azide. This antibody is purified through a protein A column, followed by peptide affinity purification.

**Storage**

Maintain refrigerated at 2-8°C for up to 2 weeks. For long term storage store at -20°C in small aliquots to prevent freeze-thaw cycles.

**Precautions**

UCLH5 Antibody (Center) is for research use only and not for use in diagnostic or therapeutic procedures.

**UCLH5 Antibody (Center) - Protein Information****Name** UCLH5**Synonyms** UCH37

**Function** Protease that specifically cleaves 'Lys-48'-linked polyubiquitin chains. Deubiquitinating enzyme associated with the 19S regulatory subunit of the 26S proteasome. Putative regulatory component of the INO80 complex; however is inactive in the INO80 complex and is activated by a transient interaction of the INO80 complex with the proteasome via ADRM1.

#### **Cellular Location**

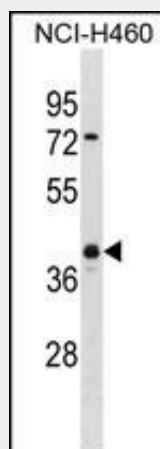
Cytoplasm. Nucleus. Note=Associates with the proteasome 19S subunit in the cytoplasm. Associates with the INO80 complex in the nucleus

#### **UCHL5 Antibody (Center) - Protocols**

Provided below are standard protocols that you may find useful for product applications.

- [Western Blot](#)
- [Blocking Peptides](#)
- [Dot Blot](#)
- [Immunohistochemistry](#)
- [Immunofluorescence](#)
- [Immunoprecipitation](#)
- [Flow Cytometry](#)
- [Cell Culture](#)

#### **UCHL5 Antibody (Center) - Images**



UCHL5 Antibody (Center) (Cat. #AP20058c) western blot analysis in NCI-H460 cell line lysates (35ug/lane). This demonstrates the UCHL5 antibody detected the UCHL5 protein (arrow).

#### **UCHL5 Antibody (Center) - Background**

Protease that specifically cleaves 'Lys-48'-linked polyubiquitin chains. Deubiquitinating enzyme associated with the 19S regulatory subunit of the 26S proteasome.

#### **UCHL5 Antibody (Center) - References**

- Nishio, K., et al. Biochem. Biophys. Res. Commun. 390(3):855-860(2009)  
Yao, T., et al. Mol. Cell 31(6):909-917(2008)  
Kouligh, E., et al. Mol. Biol. Cell 19(3):1072-1082(2008)  
Qiu, X.B., et al. EMBO J. 25(24):5742-5753(2006)  
Hamazaki, J., et al. EMBO J. 25(19):4524-4536(2006)