

DEPDC7 Antibody (C-term)
Affinity Purified Rabbit Polyclonal Antibody (Pab)
Catalog # AP20068b**Specification**

DEPDC7 Antibody (C-term) - Product Information

Application	WB,E
Primary Accession	O96QD5
Other Accession	NP_631899.2
Reactivity	Human
Host	Rabbit
Clonality	Polyclonal
Isotype	Rabbit IgG
Calculated MW	58310
Antigen Region	439-467

DEPDC7 Antibody (C-term) - Additional Information**Gene ID** 91614**Other Names**

DEP domain-containing protein 7, Protein TR2/D15, DEPDC7

Target/Specificity

This DEPDC7 antibody is generated from rabbits immunized with a KLH conjugated synthetic peptide between 439-467 amino acids from the C-terminal region of human DEPDC7.

Dilution

WB~~1:1000

Format

Purified polyclonal antibody supplied in PBS with 0.09% (W/V) sodium azide. This antibody is purified through a protein A column, followed by peptide affinity purification.

Storage

Maintain refrigerated at 2-8°C for up to 2 weeks. For long term storage store at -20°C in small aliquots to prevent freeze-thaw cycles.

Precautions

DEPDC7 Antibody (C-term) is for research use only and not for use in diagnostic or therapeutic procedures.

DEPDC7 Antibody (C-term) - Protein Information**Name** DEPDC7**Tissue Location**

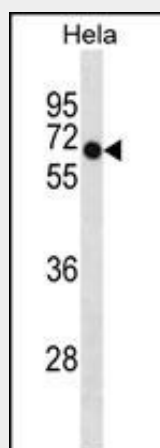
Expressed in liver..

DEPDC7 Antibody (C-term) - Protocols

Provided below are standard protocols that you may find useful for product applications.

- [Western Blot](#)
- [Blocking Peptides](#)
- [Dot Blot](#)
- [Immunohistochemistry](#)
- [Immunofluorescence](#)
- [Immunoprecipitation](#)
- [Flow Cytometry](#)
- [Cell Culture](#)

DEPDC7 Antibody (C-term) - Images



DEPDC7 Antibody (C-term) (Cat. #AP20068b) western blot analysis in HeLa cell line lysates (35ug/lane). This demonstrates the DEPDC7 antibody detected the DEPDC7 protein (arrow).

DEPDC7 Antibody (C-term) - Background

The function of this protein is unknown.

DEPDC7 Antibody (C-term) - References

Gawin, B., et al. Genome Res. 9(11):1074-1086(1999)