

**RRM1 Antibody (N-term)**  
**Affinity Purified Rabbit Polyclonal Antibody (Pab)**  
**Catalog # AP20081a****Specification**

---

**RRM1 Antibody (N-term) - Product Information**

Application	WB,E
Primary Accession	<a href="#">P23921</a>
Other Accession	<a href="#">P07742</a> , <a href="#">NP_001024.1</a>
Reactivity	Human
Predicted	Mouse
Host	Rabbit
Clonality	Polyclonal
Isotype	Rabbit IgG
Calculated MW	90070
Antigen Region	71-100

**RRM1 Antibody (N-term) - Additional Information****Gene ID** 6240**Other Names**

Ribonucleoside-diphosphate reductase large subunit, Ribonucleoside-diphosphate reductase subunit M1, Ribonucleotide reductase large subunit, RRM1, RR1

**Target/Specificity**

This RRM1 antibody is generated from rabbits immunized with a KLH conjugated synthetic peptide between 71-100 amino acids from the N-terminal region of human RRM1.

**Dilution**

WB~~1:1000

**Format**

Purified polyclonal antibody supplied in PBS with 0.09% (W/V) sodium azide. This antibody is purified through a protein A column, followed by peptide affinity purification.

**Storage**

Maintain refrigerated at 2-8°C for up to 2 weeks. For long term storage store at -20°C in small aliquots to prevent freeze-thaw cycles.

**Precautions**

RRM1 Antibody (N-term) is for research use only and not for use in diagnostic or therapeutic procedures.

**RRM1 Antibody (N-term) - Protein Information****Name** RRM1

**Synonyms** RR1

**Function** Provides the precursors necessary for DNA synthesis. Catalyzes the biosynthesis of deoxyribonucleotides from the corresponding ribonucleotides.

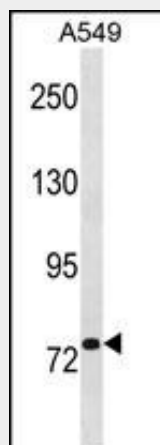
**Cellular Location**

Cytoplasm.

**RRM1 Antibody (N-term) - Protocols**

Provided below are standard protocols that you may find useful for product applications.

- [Western Blot](#)
- [Blocking Peptides](#)
- [Dot Blot](#)
- [Immunohistochemistry](#)
- [Immunofluorescence](#)
- [Immunoprecipitation](#)
- [Flow Cytometry](#)
- [Cell Culture](#)

**RRM1 Antibody (N-term) - Images**

RRM1 Antibody (N-term) (Cat. #AP20081a) western blot analysis in A549 cell line lysates (35ug/lane). This demonstrates the RRM1 antibody detected the RRM1 protein (arrow).

**RRM1 Antibody (N-term) - Background**

This gene encodes one of two non-identical subunits that constitute ribonucleoside-diphosphate reductase, an enzyme essential for the production of deoxyribonucleotides prior to DNA synthesis in S phase of dividing cells. It is one of several genes located in the imprinted gene domain of 11p15.5, an important tumor-suppressor gene region. Alterations in this region have been associated with the Beckwith-Wiedemann syndrome, Wilms tumor, rhabdomyosarcoma, adrenocortical carcinoma, and lung, ovarian, and breast cancer. This gene may play a role in malignancies and disease that involve this region.

**RRM1 Antibody (N-term) - References**

Ucisik-Akkaya, E., et al. Mol. Hum. Reprod. 16(10):770-777(2010)  
Liu, C.Y., et al. Carcinogenesis 31(7):1259-1263(2010)  
Vinolas, N., et al. Lung Cancer (2010) In press :  
Niida, H., et al. Genes Dev. 24(4):333-338(2010)  
Dong, S., et al. J Hematol Oncol 3, 10 (2010) :