

SEC11A Antibody (Center)
Affinity Purified Rabbit Polyclonal Antibody (Pab)
Catalog # AP20099c**Specification**

SEC11A Antibody (Center) - Product Information

Application	WB,E
Primary Accession	P67812
Other Accession	P0C7V7 , P42667 , Q9R0P6 , P67810 , NP_055115.1
Reactivity	Human
Predicted	Bovine, Mouse, Rat
Host	Rabbit
Clonality	Polyclonal
Isotype	Rabbit IgG
Antigen Region	95-123

SEC11A Antibody (Center) - Additional Information**Gene ID** 23478**Other Names**

Signal peptidase complex catalytic subunit SEC11A, Endopeptidase SP18, Microsomal signal peptidase 18 kDa subunit, SPase 18 kDa subunit, SEC11 homolog A, SEC11-like protein 1, SPC18, SEC11A, SEC11L1, SPC18, SPCS4A

Target/Specificity

This SEC11A antibody is generated from rabbits immunized with a KLH conjugated synthetic peptide between 95-123 amino acids from the Central region of human SEC11A.

Dilution

WB~~1:1000

Format

Purified polyclonal antibody supplied in PBS with 0.09% (W/V) sodium azide. This antibody is purified through a protein A column, followed by peptide affinity purification.

Storage

Maintain refrigerated at 2-8°C for up to 2 weeks. For long term storage store at -20°C in small aliquots to prevent freeze-thaw cycles.

Precautions

SEC11A Antibody (Center) is for research use only and not for use in diagnostic or therapeutic procedures.

SEC11A Antibody (Center) - Protein Information**Name** SEC11A

Synonyms SEC11L1, SPC18, SPCS4A

Function Catalytic component of the signal peptidase complex (SPC) which catalyzes the cleavage of N-terminal signal sequences from nascent proteins as they are translocated into the lumen of the endoplasmic reticulum (PubMed:[34388369](#)). Specifically cleaves N- terminal signal peptides that contain a hydrophobic alpha-helix (h- region) shorter than 18-20 amino acids (PubMed:[34388369](#)).

Cellular Location

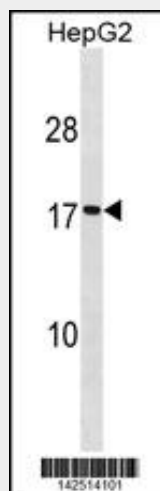
Endoplasmic reticulum membrane {ECO:0000250|UniProtKB:P67811}; Single-pass type II membrane protein {ECO:0000250|UniProtKB:P67811}

SEC11A Antibody (Center) - Protocols

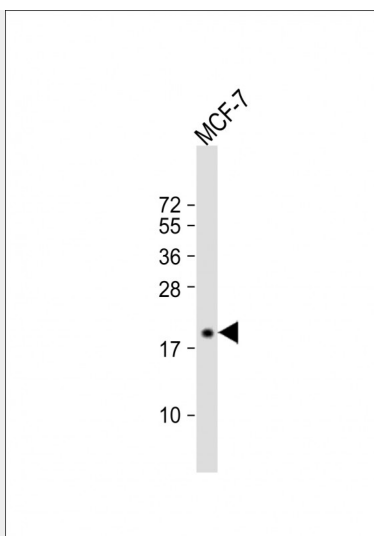
Provided below are standard protocols that you may find useful for product applications.

- [Western Blot](#)
- [Blocking Peptides](#)
- [Dot Blot](#)
- [Immunohistochemistry](#)
- [Immunofluorescence](#)
- [Immunoprecipitation](#)
- [Flow Cytometry](#)
- [Cell Culture](#)

SEC11A Antibody (Center) - Images



SEC11A Antibody (Center) (Cat. #AP20099c) western blot analysis in HepG2 cell line lysates (35ug/lane). This demonstrates the SEC11A antibody detected the SEC11A protein (arrow).



Anti-SEC11A Antibody (Center) at 1:1000 dilution + MCF-7 whole cell lysate Lysates/proteins at 20 µg per lane. Secondary Goat Anti-Rabbit IgG, (H+L), Peroxidase conjugated at 1/10000 dilution. Predicted band size : 21 kDa Blocking/Dilution buffer: 5% NFDM/TBST.

SEC11A Antibody (Center) - Background

Component of the microsomal signal peptidase complex which removes signal peptides from nascent proteins as they are translocated into the lumen of the endoplasmic reticulum (By similarity).

SEC11A Antibody (Center) - References

Ewing, R.M., et al. Mol. Syst. Biol. 3, 89 (2007) :
Dodson, G., et al. Curr. Opin. Struct. Biol. 8(2):189-194(1998)