

POPD3 Antibody (C-term)
Affinity Purified Rabbit Polyclonal Antibody (Pab)
Catalog # AP20111b

Specification

POPD3 Antibody (C-term) - Product Information

Application	WB,E
Primary Accession	O9HBV1
Other Accession	NP_071756.2
Reactivity	Human
Host	Rabbit
Clonality	Polyclonal
Isotype	Rabbit IgG
Calculated MW	33870
Antigen Region	231-259

POPD3 Antibody (C-term) - Additional Information

Gene ID 64208

Other Names

Popeye domain-containing protein 3, Popeye protein 3, POPDC3, POP3

Target/Specificity

This POPD3 antibody is generated from rabbits immunized with a KLH conjugated synthetic peptide between 231-259 amino acids from the C-terminal region of human POPD3.

Dilution

WB~~1:1000

Format

Purified polyclonal antibody supplied in PBS with 0.09% (W/V) sodium azide. This antibody is purified through a protein A column, followed by peptide affinity purification.

Storage

Maintain refrigerated at 2-8°C for up to 2 weeks. For long term storage store at -20°C in small aliquots to prevent freeze-thaw cycles.

Precautions

POPD3 Antibody (C-term) is for research use only and not for use in diagnostic or therapeutic procedures.

POPD3 Antibody (C-term) - Protein Information

Name POPDC3

Synonyms POP3

Function May play a role in the maintenance of heart function mediated, at least in part, through cAMP-binding. May play a role in the regulation of KCNK2/TREK-1-mediated current amplitude (PubMed:[31610034](#)).

Cellular Location

Membrane; Multi-pass membrane protein

Tissue Location

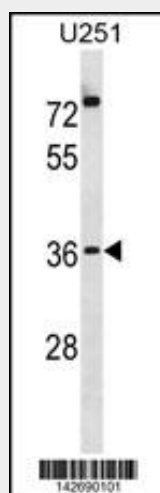
Expressed predominantly in skeletal muscle (at protein level) (PubMed:10882522, PubMed:31610034). Also detected in heart (PubMed:10882522).

POPD3 Antibody (C-term) - Protocols

Provided below are standard protocols that you may find useful for product applications.

- [Western Blot](#)
- [Blocking Peptides](#)
- [Dot Blot](#)
- [Immunohistochemistry](#)
- [Immunofluorescence](#)
- [Immunoprecipitation](#)
- [Flow Cytometry](#)
- [Cell Culture](#)

POPD3 Antibody (C-term) - Images



POPD3 Antibody (C-term) (Cat. #AP20111b) western blot analysis in U251 cell line lysates (35ug/lane). This demonstrates the POPD3 antibody detected the POPD3 protein (arrow).

POPD3 Antibody (C-term) - Background

This gene encodes a member of the POP family of proteins containing three putative transmembrane domains. This gene is expressed in cardiac and skeletal muscle and may play an important role in these tissues during development. Alternatively spliced transcript variants have been found.

POPD3 Antibody (C-term) - References

Bailey, S.D., et al. Diabetes Care 33(10):2250-2253(2010)
Kim, M., et al. Carcinogenesis 31(9):1685-1693(2010)
Zhao, J., et al. BMC Med. Genet. 11, 96 (2010) :
Talmud, P.J., et al. Am. J. Hum. Genet. 85(5):628-642(2009)
Sulem, P., et al. Nat. Genet. 41(6):734-738(2009)