

IL28RA Antibody (C-term)
Affinity Purified Rabbit Polyclonal Antibody (Pab)
Catalog # AP20138b**Specification**

IL28RA Antibody (C-term) - Product Information

Application	WB,E
Primary Accession	Q8IU57
Other Accession	NP_734464.1
Reactivity	Human
Host	Rabbit
Clonality	Polyclonal
Isotype	Rabbit IgG
Antigen Region	485-513

IL28RA Antibody (C-term) - Additional Information**Gene ID** 163702**Other Names**

Interferon lambda receptor 1, IFN-lambda receptor 1, IFN-lambda-R1, Cytokine receptor class-II member 12, Cytokine receptor family 2 member 12, CRF2-12, Interleukin-28 receptor subunit alpha, IL-28 receptor subunit alpha, IL-28R-alpha, IL-28RA, Likely interleukin or cytokine receptor 2, LICR2, IFNLR1, IL28RA, LICR2

Target/Specificity

This IL28RA antibody is generated from rabbits immunized with a KLH conjugated synthetic peptide between 485-513 amino acids of human IL28RA.

Dilution

WB~~1:1000

Format

Purified polyclonal antibody supplied in PBS with 0.09% (W/V) sodium azide. This antibody is purified through a protein A column, followed by peptide affinity purification.

Storage

Maintain refrigerated at 2-8°C for up to 2 weeks. For long term storage store at -20°C in small aliquots to prevent freeze-thaw cycles.

Precautions

IL28RA Antibody (C-term) is for research use only and not for use in diagnostic or therapeutic procedures.

IL28RA Antibody (C-term) - Protein Information**Name** IFNLR1

Synonyms IL28RA, LICR2

Function The IFNLR1/IL10RB dimer is a receptor for the cytokine ligands IFNL2 and IFNL3 and mediates their antiviral activity. The ligand/receptor complex stimulate the activation of the JAK/STAT signaling pathway leading to the expression of IFN-stimulated genes (ISG), which contribute to the antiviral state. Determines the cell type specificity of the lambda interferon action. Shows a more restricted pattern of expression in the epithelial tissues thereby limiting responses to lambda interferons primarily to epithelial cells of the respiratory, gastrointestinal, and reproductive tracts. Seems not to be essential for early virus-activated host defense in vaginal infection, but plays an important role in Toll-like receptor (TLR)- induced antiviral defense. Plays a significant role in the antiviral immune defense in the intestinal epithelium.

Cellular Location

Membrane; Single-pass type I membrane protein

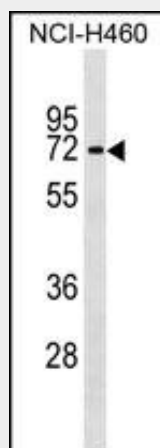
Tissue Location

Widely expressed.

IL28RA Antibody (C-term) - Protocols

Provided below are standard protocols that you may find useful for product applications.

- [Western Blot](#)
- [Blocking Peptides](#)
- [Dot Blot](#)
- [Immunohistochemistry](#)
- [Immunofluorescence](#)
- [Immunoprecipitation](#)
- [Flow Cytometry](#)
- [Cell Culture](#)

IL28RA Antibody (C-term) - Images

IL28RA Antibody (C-term) (Cat. #AP20138b) western blot analysis in NCI-H460 cell line lysates (35ug/lane). This demonstrates the IL28RA antibody detected the IL28RA protein (arrow).

IL28RA Antibody (C-term) - Background

The protein encoded by this gene belongs to the class II cytokine receptor family. This protein forms a receptor complex

with interleukine 10 receptor, beta (IL10RB). The receptor complex has been shown to interact with three closely related cytokines, including interleukin 28A (IL28A), interleukin 28B (IL28B), and interleukin 29 (IL29). The expression of all three cytokines can be induced by viral infection. The cells overexpressing this protein have been found to have enhanced responses to IL28A and IL29, but decreased response to IL28B. Three alternatively spliced transcript variants encoding distinct isoforms have been reported. [provided by RefSeq].

IL28RA Antibody (C-term) - References

Davila, S., et al. Genes Immun. 11(3):232-238(2010)
Magracheva, E., et al. Acta Crystallogr. Sect. F Struct. Biol. Cryst. Commun. 66 (PT 1), 61-63 (2010)
:
Witte, K., et al. Genes Immun. 10(8):702-714(2009)
Laje, G., et al. Pharmacogenet. Genomics 19(9):666-674(2009)
Trynka, G., et al. Gut 58(8):1078-1083(2009)