

**SSX6 Antibody (Center)**  
**Affinity Purified Rabbit Polyclonal Antibody (Pab)**  
**Catalog # AP20169c****Specification**

---

**SSX6 Antibody (Center) - Product Information**

|                   |                        |
|-------------------|------------------------|
| Application       | WB,E                   |
| Primary Accession | <a href="#">Q7RTT6</a> |
| Reactivity        | Human                  |
| Host              | Rabbit                 |
| Clonality         | Polyclonal             |
| Isotype           | Rabbit IgG             |
| Calculated MW     | 21688                  |
| Antigen Region    | 62-91                  |

**SSX6 Antibody (Center) - Additional Information****Other Names**

Putative protein SSX6, SSX6

**Target/Specificity**

This SSX6 antibody is generated from rabbits immunized with a KLH conjugated synthetic peptide between 62-91 amino acids from the Central region of human SSX6.

**Dilution**

WB~~1:1000

**Format**

Purified polyclonal antibody supplied in PBS with 0.09% (W/V) sodium azide. This antibody is purified through a protein A column, followed by peptide affinity purification.

**Storage**

Maintain refrigerated at 2-8°C for up to 2 weeks. For long term storage store at -20°C in small aliquots to prevent freeze-thaw cycles.

**Precautions**

SSX6 Antibody (Center) is for research use only and not for use in diagnostic or therapeutic procedures.

**SSX6 Antibody (Center) - Protein Information**

**Name** SSX6P ([HGNC:19652](#))

**Synonyms** SSX6

**Function** Could act as a modulator of transcription.

**Tissue Location**

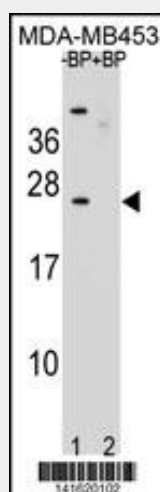
Not detected in any normal tissues. Expressed in a melanoma cell line.

### **SSX6 Antibody (Center) - Protocols**

Provided below are standard protocols that you may find useful for product applications.

- [Western Blot](#)
- [Blocking Peptides](#)
- [Dot Blot](#)
- [Immunohistochemistry](#)
- [Immunofluorescence](#)
- [Immunoprecipitation](#)
- [Flow Cytometry](#)
- [Cell Culture](#)

### **SSX6 Antibody (Center) - Images**



Western blot analysis of SSX6 Antibody (Center) Pab (Cat. #AP20169c) pre-incubated without (lane 1) and with (lane 2) blocking peptide in MDA-MB453 cell line lysate. SSX6 Antibody (Center) (arrow) was detected using the purified Pab.

### **SSX6 Antibody (Center) - Background**

Could act as a modulator of transcription.