

RRBP4 Antibody (N-term)
Affinity Purified Rabbit Polyclonal Antibody (Pab)
Catalog # AP20177A**Specification**

RRBP4 Antibody (N-term) - Product Information

Application	WB,E
Primary Accession	P02753
Other Accession	P04916 , P27485 , Q00724 , NP_006735.2 , Q28369
Reactivity	Mouse
Predicted	Horse, Pig, Rat
Host	Rabbit
Clonality	Polyclonal
Isotype	Rabbit IgG
Calculated MW	23010
Antigen Region	11-40

RRBP4 Antibody (N-term) - Additional Information**Gene ID** 5950**Other Names**

Retinol-binding protein 4, Plasma retinol-binding protein, PRBP, RBP, Plasma retinol-binding protein(1-182), Plasma retinol-binding protein(1-181), Plasma retinol-binding protein(1-179), Plasma retinol-binding protein(1-176), RBP4

Target/Specificity

This RBP4 antibody is generated from rabbits immunized with a KLH conjugated synthetic peptide between 11-40 amino acids from the N-terminal region of human RBP4.

Dilution

WB~~1:1000

Format

Purified polyclonal antibody supplied in PBS with 0.09% (W/V) sodium azide. This antibody is purified through a protein A column, followed by peptide affinity purification.

Storage

Maintain refrigerated at 2-8°C for up to 2 weeks. For long term storage store at -20°C in small aliquots to prevent freeze-thaw cycles.

Precautions

RRBP4 Antibody (N-term) is for research use only and not for use in diagnostic or therapeutic procedures.

RRBP4 Antibody (N-term) - Protein Information

Name RBP4

Function Retinol-binding protein that mediates retinol transport in blood plasma (PubMed:[5541771](#)). Delivers retinol from the liver stores to the peripheral tissues (Probable). Transfers the bound all-trans retinol to STRA6, that then facilitates retinol transport across the cell membrane (PubMed:[22665496](#)).

Cellular Location

Secreted

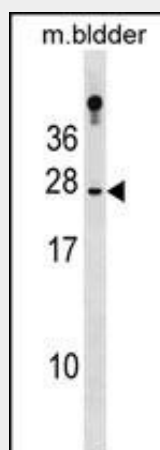
Tissue Location

Detected in blood plasma and in urine (at protein level).

RBP4 Antibody (N-term) - Protocols

Provided below are standard protocols that you may find useful for product applications.

- [Western Blot](#)
- [Blocking Peptides](#)
- [Dot Blot](#)
- [Immunohistochemistry](#)
- [Immunofluorescence](#)
- [Immunoprecipitation](#)
- [Flow Cytometry](#)
- [Cell Culture](#)

RBP4 Antibody (N-term) - Images

RBP4 Antibody (N-term) (Cat. #AP20177a) western blot analysis in mouse bladder tissue lysates (35ug/lane). This demonstrates the RBP4 antibody detected the RBP4 protein (arrow).

RBP4 Antibody (N-term) - Background

This protein belongs to the lipocalin family and is the specific carrier for retinol (vitamin A alcohol) in the blood. It delivers retinol from the liver stores to the peripheral tissues. In plasma, the RBP-retinol complex interacts with transthyretin which prevents its loss by filtration through the kidney glomeruli. A deficiency of vitamin A blocks secretion of the binding protein posttranslationally and results in defective delivery and supply to

the epidermal cells.

RBP4 Antibody (N-term) - References

Wang, S.N., et al. J. Formos. Med. Assoc. 109(6):422-429(2010)
Liu, X.H., et al. Zhonghua Yi Xue Za Zhi 90(18):1251-1254(2010)
Ku, Y.H., et al. J. Int. Med. Res. 38(3):782-791(2010)
Giacomozzi, C., et al. J. Endocrinol. Invest. 33(4):218-221(2010)
Nair, A.K., et al. PLoS ONE 5 (7), E11444 (2010) :

RBP4 Antibody (N-term) - Citations

- [O-GlcNAcylation disrupts STRA6-retinol signals in kidneys of diabetes.](#)