

**UBR1 Antibody (N-term)**  
**Affinity Purified Rabbit Polyclonal Antibody (Pab)**  
**Catalog # AP20192a**

**Specification**

---

**UBR1 Antibody (N-term) - Product Information**

Application	WB,E
Primary Accession	<a href="#">Q8IWV7</a>
Other Accession	<a href="#">O70481</a> , <a href="#">NP_777576.1</a>
Reactivity	Mouse
Host	Rabbit
Clonality	Polyclonal
Isotype	Rabbit IgG
Antigen Region	245-274

**UBR1 Antibody (N-term) - Additional Information**

**Gene ID** 197131

**Other Names**

E3 ubiquitin-protein ligase UBR1, 632-, N-recoglin-1, Ubiquitin-protein ligase E3-alpha-1, Ubiquitin-protein ligase E3-alpha-I, UBR1

**Target/Specificity**

This UBR1 antibody is generated from rabbits immunized with a KLH conjugated synthetic peptide between 245-274 amino acids from the N-terminal region of human UBR1.

**Dilution**

WB~~1:1000

**Format**

Purified polyclonal antibody supplied in PBS with 0.09% (W/V) sodium azide. This antibody is purified through a protein A column, followed by peptide affinity purification.

**Storage**

Maintain refrigerated at 2-8°C for up to 2 weeks. For long term storage store at -20°C in small aliquots to prevent freeze-thaw cycles.

**Precautions**

UBR1 Antibody (N-term) is for research use only and not for use in diagnostic or therapeutic procedures.

**UBR1 Antibody (N-term) - Protein Information**

**Name** UBR1

**Function** E3 ubiquitin-protein ligase which is a component of the N-end rule pathway. Recognizes and binds to proteins bearing specific N- terminal residues that are destabilizing according to the

N-end rule, leading to their ubiquitination and subsequent degradation. May be involved in pancreatic homeostasis. Binds leucine and is a negative regulator of the leucine-mTOR signaling pathway, thereby controlling cell growth.

**Cellular Location**

Cytoplasm, cytosol.

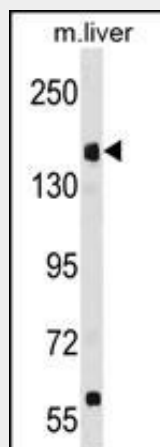
**Tissue Location**

Broadly expressed, with highest levels in skeletal muscle, kidney and pancreas. Present in acinar cells of the pancreas (at protein level).

**UBR1 Antibody (N-term) - Protocols**

Provided below are standard protocols that you may find useful for product applications.

- [Western Blot](#)
- [Blocking Peptides](#)
- [Dot Blot](#)
- [Immunohistochemistry](#)
- [Immunofluorescence](#)
- [Immunoprecipitation](#)
- [Flow Cytometry](#)
- [Cell Culture](#)

**UBR1 Antibody (N-term) - Images**

UBR1 Antibody (N-term) (Cat. #AP20192a) western blot analysis in mouse liver tissue lysates (35ug/lane). This demonstrates the UBR1 antibody detected the UBR1 protein (arrow).

**UBR1 Antibody (N-term) - Background**

The N-end rule pathway is one proteolytic pathway of the ubiquitin system. The recognition component of this pathway, encoded by this gene, binds to a destabilizing N-terminal residue of a substrate protein and participates in the formation of a substrate-linked multiubiquitin chain. This leads to the eventual degradation of the substrate protein. The protein described in this record has a RING-type zinc finger and a UBR-type zinc finger. Mutations in this gene have been associated with Johanson-Blizzard syndrome.

**UBR1 Antibody (N-term) - References**

Elting, M., et al. Am. J. Med. Genet. A 146A (23), 3058-3061 (2008) :  
Alkhoury, N., et al. World J. Gastroenterol. 14(44):6863-6866(2008)  
Yamaguchi, Y., et al. BMC Med. Genet. 9, 22 (2008) :  
Schmidt, R.L., et al. Cancer Res. 67(24):11798-11810(2007)  
Wei, S., et al. Mol. Pharmacol. 72(3):725-733(2007)