

**Mouse Ppm1h Antibody (Center)**  
**Affinity Purified Rabbit Polyclonal Antibody (Pab)**  
**Catalog # AP20216c****Specification**

---

**Mouse Ppm1h Antibody (Center) - Product Information**

Application	WB,E
Primary Accession	<a href="#">Q3UYC0</a>
Other Accession	<a href="#">Q5M821</a> , <a href="#">NP_001103688.1</a>
Reactivity	Mouse
Predicted	Rat
Host	Rabbit
Clonality	Polyclonal
Isotype	Rabbit IgG
Calculated MW	56380
Antigen Region	234-262

**Mouse Ppm1h Antibody (Center) - Additional Information****Gene ID** 319468**Other Names**

Protein phosphatase 1H, Ppm1h, Kiaa1157

**Target/Specificity**

This Mouse Ppm1h antibody is generated from rabbits immunized with a KLH conjugated synthetic peptide between 234-262 amino acids from the Central region of mouse Ppm1h.

**Dilution**

WB~~1:1000

**Format**

Purified polyclonal antibody supplied in PBS with 0.09% (W/V) sodium azide. This antibody is purified through a protein A column, followed by peptide affinity purification.

**Storage**

Maintain refrigerated at 2-8°C for up to 2 weeks. For long term storage store at -20°C in small aliquots to prevent freeze-thaw cycles.

**Precautions**

Mouse Ppm1h Antibody (Center) is for research use only and not for use in diagnostic or therapeutic procedures.

**Mouse Ppm1h Antibody (Center) - Protein Information****Name** Ppm1h**Synonyms** Kiaa1157

**Function** Dephosphorylates CDKN1B at 'Thr-187', thus removing a signal for proteasomal degradation.

**Cellular Location**

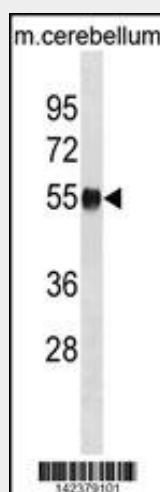
Nucleus {ECO:0000250|UniProtKB:Q9ULR3}. Cytoplasm {ECO:0000250|UniProtKB:Q9ULR3}

**Mouse Ppm1h Antibody (Center) - Protocols**

Provided below are standard protocols that you may find useful for product applications.

- [Western Blot](#)
- [Blocking Peptides](#)
- [Dot Blot](#)
- [Immunohistochemistry](#)
- [Immunofluorescence](#)
- [Immunoprecipitation](#)
- [Flow Cytometry](#)
- [Cell Culture](#)

**Mouse Ppm1h Antibody (Center) - Images**



MOUSE Ppm1h Antibody (Center) (Cat. #AP20216c) western blot analysis in mouse cerebellum tissue lysates (35ug/lane). This demonstrates the MOUSE Ppm1h antibody detected the MOUSE Ppm1h protein (arrow).

**Mouse Ppm1h Antibody (Center) - Background**

The function of this protein is unknown.

**Mouse Ppm1h Antibody (Center) - References**

Coulpier, F., et al. Glia 57(13):1450-1457(2009)  
Nishimura, M., et al. DNA Res. 11(5):315-323(2004)