

**RNASE1 Antibody (N-term)**  
**Affinity Purified Rabbit Polyclonal Antibody (Pab)**  
**Catalog # AP20222a**

**Specification**

---

**RNASE1 Antibody (N-term) - Product Information**

|                   |                             |
|-------------------|-----------------------------|
| Application       | WB,E                        |
| Primary Accession | <a href="#">P07998</a>      |
| Other Accession   | <a href="#">NP_937878.1</a> |
| Reactivity        | Human                       |
| Host              | Rabbit                      |
| Clonality         | Polyclonal                  |
| Isotype           | Rabbit IgG                  |
| Calculated MW     | 17644                       |
| Antigen Region    | 14-42                       |

**RNASE1 Antibody (N-term) - Additional Information**

**Gene ID** 6035

**Other Names**

Ribonuclease pancreatic, HP-RNase, RIB-1, RNase Upl-1, Ribonuclease 1, RNase 1, Ribonuclease A, RNase A, RNASE1, RIB1, RNS1

**Target/Specificity**

This RNASE1 antibody is generated from rabbits immunized with a KLH conjugated synthetic peptide between 14-42 amino acids from the N-terminal region of human RNASE1.

**Dilution**

WB~~1:1000

**Format**

Purified polyclonal antibody supplied in PBS with 0.09% (W/V) sodium azide. This antibody is purified through a protein A column, followed by peptide affinity purification.

**Storage**

Maintain refrigerated at 2-8°C for up to 2 weeks. For long term storage store at -20°C in small aliquots to prevent freeze-thaw cycles.

**Precautions**

RNASE1 Antibody (N-term) is for research use only and not for use in diagnostic or therapeutic procedures.

**RNASE1 Antibody (N-term) - Protein Information**

**Name** RNASE1

**Synonyms** RIB1, RNS1

**Function** Endonuclease that catalyzes the cleavage of RNA on the 3' side of pyrimidine nucleotides. Acts on single-stranded and double- stranded RNA.

**Cellular Location**

Secreted.

**Tissue Location**

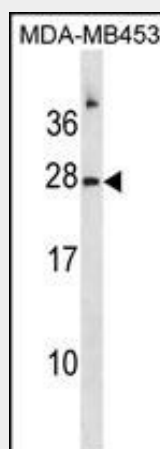
Pancreas and other tissues and body fluids (indicating it may have other physiological functions besides its role in digestion)

**RNASE1 Antibody (N-term) - Protocols**

Provided below are standard protocols that you may find useful for product applications.

- [Western Blot](#)
- [Blocking Peptides](#)
- [Dot Blot](#)
- [Immunohistochemistry](#)
- [Immunofluorescence](#)
- [Immunoprecipitation](#)
- [Flow Cytometry](#)
- [Cell Culture](#)

**RNASE1 Antibody (N-term) - Images**



RNASE1 Antibody (N-term) (Cat. #AP20222a) western blot analysis in MDA-MB453 cell line lysates (35ug/lane). This demonstrates the RNASE1 antibody detected the RNASE1 protein (arrow).

**RNASE1 Antibody (N-term) - Background**

This gene encodes a member of the pancreatic-type of secretory ribonucleases, a subset of the ribonuclease A superfamily. The encoded endonuclease cleaves internal phosphodiester RNA bonds on the 3'-side of pyrimidine bases. It prefers poly(C) as a substrate and hydrolyzes 2',3'-cyclic nucleotides, with a pH optimum near 8.0. The encoded protein is monomeric and more commonly acts to degrade ds-RNA over ss-RNA. Alternative splicing occurs at this locus and four transcript variants encoding the same protein have been identified. [provided by RefSeq].

**RNASE1 Antibody (N-term) - References**

D'Alessio, G. Biopolymers 91(12):989-994(2009)  
Kover, K.E., et al. J. Mol. Biol. 379(5):953-965(2008)  
Ueki, M., et al. Biochem. Genet. 46 (3-4), 145-153 (2008) :  
Johnson, R.J., et al. Biochemistry 46(36):10308-10316(2007)  
Cybulski, C., et al. Urol. Int. 79(1):44-49(2007)