

**Mouse Sike1 Antibody (N-term)**  
**Affinity Purified Rabbit Polyclonal Antibody (Pab)**  
**Catalog # AP20223a****Specification**

---

**Mouse Sike1 Antibody (N-term) - Product Information**

Application	WB,E
Primary Accession	<a href="#">Q9CPR7</a>
Other Accession	<a href="#">Q5FWT9</a> , <a href="#">NP_079955.1</a>
Reactivity	Mouse
Predicted	Rat
Host	Rabbit
Clonality	Polyclonal
Isotype	Rabbit IgG
Calculated MW	23522
Antigen Region	36-63

**Mouse Sike1 Antibody (N-term) - Additional Information****Gene ID** 66641**Other Names**

Suppressor of IKBKE 1, Suppressor of IKK-epsilon, Sike1

**Target/Specificity**

This Mouse Sike1 antibody is generated from rabbits immunized with a KLH conjugated synthetic peptide between 36-63 amino acids from the N-terminal region of mouse Sike1.

**Dilution**

WB~~1:1000

**Format**

Purified polyclonal antibody supplied in PBS with 0.09% (W/V) sodium azide. This antibody is purified through a protein A column, followed by peptide affinity purification.

**Storage**

Maintain refrigerated at 2-8°C for up to 2 weeks. For long term storage store at -20°C in small aliquots to prevent freeze-thaw cycles.

**Precautions**

Mouse Sike1 Antibody (N-term) is for research use only and not for use in diagnostic or therapeutic procedures.

**Mouse Sike1 Antibody (N-term) - Protein Information****Name** Sike1**Function** Physiological suppressor of IKK-epsilon and TBK1 that plays an inhibitory role in virus-

and TLR3-triggered IRF3. Inhibits TLR3- mediated activation of interferon-stimulated response elements (ISRE) and the IFN-beta promoter. May act by disrupting the interactions of IKBKE or TBK1 with TICAM1/TRIF, IRF3 and RIGI. Does not inhibit NF- kappa-B activation pathways (By similarity).

#### Cellular Location

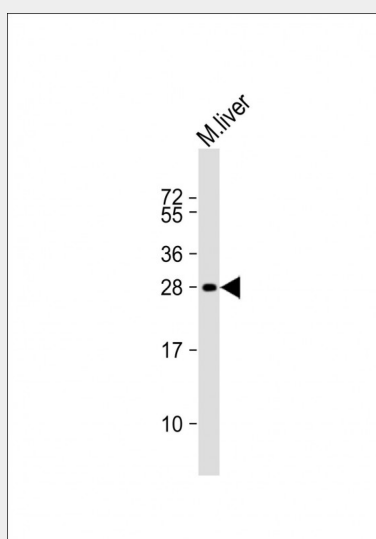
Cytoplasm.

#### Mouse Sike1 Antibody (N-term) - Protocols

Provided below are standard protocols that you may find useful for product applications.

- [Western Blot](#)
- [Blocking Peptides](#)
- [Dot Blot](#)
- [Immunohistochemistry](#)
- [Immunofluorescence](#)
- [Immunoprecipitation](#)
- [Flow Cytometry](#)
- [Cell Culture](#)

#### Mouse Sike1 Antibody (N-term) - Images



Anti-MOUSE Sike1 Antibody (N-term) at 1:1000 dilution + mouse liver lysate Lysates/proteins at 20 µg per lane. Secondary Goat Anti-Rabbit IgG, (H+L), Peroxidase conjugated at 1/10000 dilution. Predicted band size : 24 kDa Blocking/Dilution buffer: 5% NFDM/TBST.

#### Mouse Sike1 Antibody (N-term) - Background

Physiological suppressor of IKK-epsilon and TBK1 that plays an inhibitory role in virus-and TLR3-triggered IRF3. Inhibits TLR3-mediated activation of interferon-stimulated response elements (ISRE) and the IFN-beta promoter. May act by disrupting the interactions of IKBKE or TBK1 with TICAM1/TRIF, IRF3 and DDX58/RIG-I. Does not inhibit NF-kappa-B activation pathways (By similarity).

#### Mouse Sike1 Antibody (N-term) - References

Katayama, S., et al. Science 309(5740):1564-1566(2005)  
Carninci, P., et al. Science 309(5740):1559-1563(2005)