

**Mouse Tbkbp1 Antibody (C-term)**  
**Affinity Purified Rabbit Polyclonal Antibody (Pab)**  
**Catalog # AP20224b****Specification**

---

**Mouse Tbkbp1 Antibody (C-term) - Product Information**

Application	WB,E
Primary Accession	<a href="#">A2A9T0</a>
Other Accession	<a href="#">NP_932768.2</a>
Reactivity	Human, Mouse
Host	Rabbit
Clonality	Polyclonal
Isotype	Rabbit IgG
Calculated MW	67001
Antigen Region	470-497

**Mouse Tbkbp1 Antibody (C-term) - Additional Information****Gene ID** 73174**Other Names**

TANK-binding kinase 1-binding protein 1, TBK1-binding protein 1, Similar to NAP1 TBK1 adapter, Tbkbp1 {ECO:0000312|MGI:MGI:1920424}

**Target/Specificity**

This Mouse Tbkbp1 antibody is generated from rabbits immunized with a KLH conjugated synthetic peptide between 470-497 amino acids from the C-terminal region of mouse Tbkbp1.

**Dilution**

WB~~1:4000

**Format**

Purified polyclonal antibody supplied in PBS with 0.09% (W/V) sodium azide. This antibody is purified through a protein A column, followed by peptide affinity purification.

**Storage**

Maintain refrigerated at 2-8°C for up to 2 weeks. For long term storage store at -20°C in small aliquots to prevent freeze-thaw cycles.

**Precautions**

Mouse Tbkbp1 Antibody (C-term) is for research use only and not for use in diagnostic or therapeutic procedures.

**Mouse Tbkbp1 Antibody (C-term) - Protein Information****Name** Tbkbp1 {ECO:0000312|MGI:MGI:1920424}**Function** Adapter protein which constitutively binds TBK1 and IKBKE playing a role in antiviral

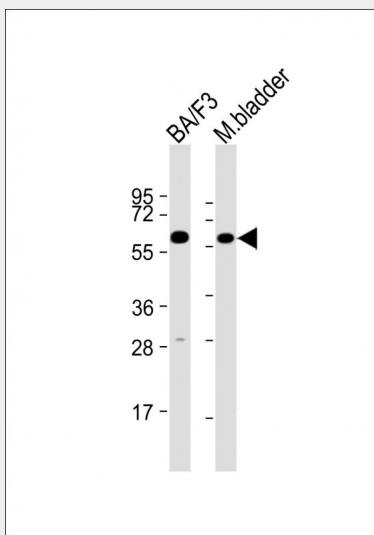
innate immunity. Essential for the efficient induction of IRF-dependent transcription following infection with Sendai virus.

### Mouse Tbkbp1 Antibody (C-term) - Protocols

Provided below are standard protocols that you may find useful for product applications.

- [Western Blot](#)
- [Blocking Peptides](#)
- [Dot Blot](#)
- [Immunohistochemistry](#)
- [Immunofluorescence](#)
- [Immunoprecipitation](#)
- [Flow Cytometry](#)
- [Cell Culture](#)

### Mouse Tbkbp1 Antibody (C-term) - Images



All lanes : Anti-MOUSE Tbkbp1 Antibody (C-term) at 1:4000 dilution Lane 1: BA/F3 lysate Lane 2: mouse bladder lysate Lysates/proteins at 20 µg per lane. Secondary Goat Anti-Rabbit IgG, (H+L), Peroxidase conjugated at 1/10000 dilution. Predicted band size : 47 kDa Blocking/Dilution buffer: 5% NFDm/TBST.

### Mouse Tbkbp1 Antibody (C-term) - Background

Adapter protein which constitutively binds TBK1 and IKKε and may play a role in antiviral innate immunity. Essential for the efficient induction of IRF-dependent transcription following infection with Sendai virus.

### Mouse Tbkbp1 Antibody (C-term) - References

Ryzhakov, G., et al. EMBO J. 26(13):3180-3190(2007)  
Zambrowicz, B.P., et al. Proc. Natl. Acad. Sci. U.S.A. 100(24):14109-14114(2003)