

**GUCA1C Antibody (C-term)**  
**Affinity Purified Rabbit Polyclonal Antibody (Pab)**  
**Catalog # AP20239B****Specification**

---

**GUCA1C Antibody (C-term) - Product Information**

Application	WB,E
Primary Accession	<a href="#">O95843</a>
Other Accession	<a href="#">NP_005450.3</a>
Reactivity	Human
Host	Rabbit
Clonality	Polyclonal
Isotype	Rabbit IgG
Calculated MW	23822
Antigen Region	171-199

**GUCA1C Antibody (C-term) - Additional Information****Gene ID** 9626**Other Names**

Guanylyl cyclase-activating protein 3, GCAP 3, Guanylate cyclase activator 1C, GUCA1C, GCAP3

**Target/Specificity**

This GUCA1C antibody is generated from rabbits immunized with a KLH conjugated synthetic peptide between 171-199 amino acids from the C-terminal region of human GUCA1C.

**Dilution**

WB~~1:1000

**Format**

Purified polyclonal antibody supplied in PBS with 0.09% (W/V) sodium azide. This antibody is purified through a protein A column, followed by peptide affinity purification.

**Storage**

Maintain refrigerated at 2-8°C for up to 2 weeks. For long term storage store at -20°C in small aliquots to prevent freeze-thaw cycles.

**Precautions**

GUCA1C Antibody (C-term) is for research use only and not for use in diagnostic or therapeutic procedures.

**GUCA1C Antibody (C-term) - Protein Information****Name** GUCA1C**Synonyms** GCAP3

**Function** Stimulates guanylyl cyclase 1 (GC1) and GC2 when free calcium ions concentration is low and inhibits guanylyl cyclases when free calcium ions concentration is elevated. This  $\text{Ca}^{2+}$ -sensitive regulation of guanylyl cyclase (GC) is a key event in recovery of the dark state of rod photoreceptors following light exposure.

**Tissue Location**

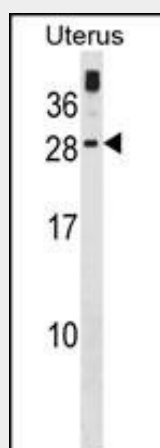
Retina.

**GUCA1C Antibody (C-term) - Protocols**

Provided below are standard protocols that you may find useful for product applications.

- [Western Blot](#)
- [Blocking Peptides](#)
- [Dot Blot](#)
- [Immunohistochemistry](#)
- [Immunofluorescence](#)
- [Immunoprecipitation](#)
- [Flow Cytometry](#)
- [Cell Culture](#)

**GUCA1C Antibody (C-term) - Images**



GUCA1C Antibody (C-term) (Cat. #AP20239b) western blot analysis in human Uterus tissue lysates (35ug/lane). This demonstrates the GUCA1C antibody detected the GUCA1C protein (arrow).

**GUCA1C Antibody (C-term) - Background**

GUCA1C stimulates guanylyl cyclase 1 (GC1) and GC2 when free calcium ions concentration is low and inhibits guanylyl cyclases when free calcium ions concentration is elevated. This  $\text{Ca}^{2+}$ -sensitive regulation of guanylyl cyclase (GC) is a key event in recovery of the dark state of rod photoreceptors following light exposure.

**GUCA1C Antibody (C-term) - References**

Stephen, R., et al. J. Mol. Biol. 359(2):266-275(2006)  
Imanishi, Y., et al. Eur. J. Neurosci. 15(1):63-78(2002)  
Haeseleer, F., et al. J. Biol. Chem. 274(10):6526-6535(1999)