

PSMD6 Antibody (Center)
Affinity Purified Rabbit Polyclonal Antibody (Pab)
Catalog # AP20266C

Specification

PSMD6 Antibody (Center) - Product Information

Application	WB,E
Primary Accession	Q15008
Other Accession	Q99JI4 , Q9V3G7 , Q3T0B2 , NP_055629.1
Reactivity	Human
Predicted	Bovine, Drosophila, Mouse
Host	Rabbit
Clonality	Polyclonal
Isotype	Rabbit IgG
Calculated MW	45531
Antigen Region	154-182

PSMD6 Antibody (Center) - Additional Information

Gene ID 9861

Other Names

26S proteasome non-ATPase regulatory subunit 6, 26S proteasome regulatory subunit RPN7, 26S proteasome regulatory subunit S10, Breast cancer-associated protein SGA-113M, Phosphonoformate immuno-associated protein 4, Proteasome regulatory particle subunit p44S10, p42A, PSMD6, KIAA0107, PFAAP4

Target/Specificity

This PSMD6 antibody is generated from rabbits immunized with a KLH conjugated synthetic peptide between 154-182 amino acids from the Central region of human PSMD6.

Dilution

WB~~1:1000

Format

Purified polyclonal antibody supplied in PBS with 0.09% (W/V) sodium azide. This antibody is purified through a protein A column, followed by peptide affinity purification.

Storage

Maintain refrigerated at 2-8°C for up to 2 weeks. For long term storage store at -20°C in small aliquots to prevent freeze-thaw cycles.

Precautions

PSMD6 Antibody (Center) is for research use only and not for use in diagnostic or therapeutic procedures.

PSMD6 Antibody (Center) - Protein Information

Name PSMD6

Synonyms KIAA0107, PFAAP4

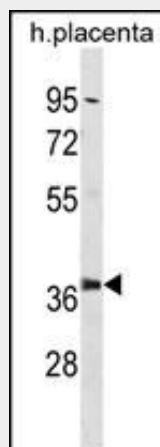
Function Component of the 26S proteasome, a multiprotein complex involved in the ATP-dependent degradation of ubiquitinated proteins. This complex plays a key role in the maintenance of protein homeostasis by removing misfolded or damaged proteins, which could impair cellular functions, and by removing proteins whose functions are no longer required. Therefore, the proteasome participates in numerous cellular processes, including cell cycle progression, apoptosis, or DNA damage repair.

PSMD6 Antibody (Center) - Protocols

Provided below are standard protocols that you may find useful for product applications.

- [Western Blot](#)
- [Blocking Peptides](#)
- [Dot Blot](#)
- [Immunohistochemistry](#)
- [Immunofluorescence](#)
- [Immunoprecipitation](#)
- [Flow Cytometry](#)
- [Cell Culture](#)

PSMD6 Antibody (Center) - Images



PSMD6 Antibody (Center) (Cat. #AP20266c) western blot analysis in human placenta tissue lysates (35ug/lane). This demonstrates the PSMD6 antibody detected the PSMD6 protein (arrow).

PSMD6 Antibody (Center) - Background

Acts as a regulatory subunit of the 26S proteasome which is involved in the ATP-dependent degradation of ubiquitinated proteins.

PSMD6 Antibody (Center) - References

Tanaka, T., et al. Am. J. Hum. Genet. 84(4):477-482(2009)
Ewing, R.M., et al. Mol. Syst. Biol. 3, 89 (2007) :
Listovsky, T., et al. EMBO J. 23(7):1619-1626(2004)
Bouwmeester, T., et al. Nat. Cell Biol. 6(2):97-105(2004)

Margottin-Goguet, F., et al. Dev. Cell 4(6):813-826(2003)