

**SPRY3 Antibody (C-term)**  
**Affinity Purified Rabbit Polyclonal Antibody (Pab)**  
**Catalog # AP20296b****Specification**

---

**SPRY3 Antibody (C-term) - Product Information**

Application	WB,E
Primary Accession	<a href="#">O43610</a>
Reactivity	Human
Host	Rabbit
Clonality	Polyclonal
Isotype	Rabbit IgG
Calculated MW	31222
Antigen Region	261-288

**SPRY3 Antibody (C-term) - Additional Information****Gene ID** 10251**Other Names**

Protein sprouty homolog 3, Spry-3, SPRY3

**Target/Specificity**

This SPRY3 antibody is generated from rabbits immunized with a KLH conjugated synthetic peptide between 261-288 amino acids from the C-terminal region of human SPRY3.

**Dilution**

WB~~1:1000

**Format**

Purified polyclonal antibody supplied in PBS with 0.09% (W/V) sodium azide. This antibody is purified through a protein A column, followed by peptide affinity purification.

**Storage**

Maintain refrigerated at 2-8°C for up to 2 weeks. For long term storage store at -20°C in small aliquots to prevent freeze-thaw cycles.

**Precautions**

SPRY3 Antibody (C-term) is for research use only and not for use in diagnostic or therapeutic procedures.

**SPRY3 Antibody (C-term) - Protein Information****Name** SPRY3 ([HGNC:11271](#))

**Function** Inhibits neurite branching, arbor length and neurite complexity (By similarity). Inhibits EGF-mediated p42/44 ERK signaling (By similarity). Negatively regulates the MAPK cascade, resulting in a reduction of extracellular matrix protein accumulation (PubMed:[30878395](#)). May

function as an antagonist of fibroblast growth factor (FGF) pathways and may negatively modulate respiratory organogenesis (PubMed:[9458049](#)).

**Cellular Location**

Cytoplasm.

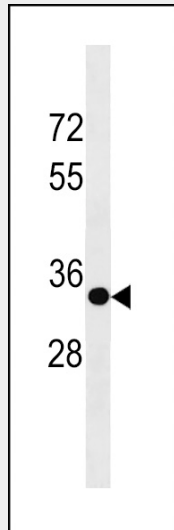
**Tissue Location**

Widely expressed; particularly in the fetal tissues. Expressed in the brain with expression the highest in Purkinje cells in the cerebellum (at protein level) (PubMed:26089202). Expressed in the myocardium of the heart (PubMed:30878395)

**SPRY3 Antibody (C-term) - Protocols**

Provided below are standard protocols that you may find useful for product applications.

- [Western Blot](#)
- [Blocking Peptides](#)
- [Dot Blot](#)
- [Immunohistochemistry](#)
- [Immunofluorescence](#)
- [Immunoprecipitation](#)
- [Flow Cytometry](#)
- [Cell Culture](#)

**SPRY3 Antibody (C-term) - Images**

SPRY3 Antibody (C-term) (Cat. #AP20296b) western blot analysis in 293 cell line lysates (35ug/lane). This demonstrates the SPRY3 antibody detected the SPRY3 protein (arrow).

**SPRY3 Antibody (C-term) - Background**

May function as an antagonist of fibroblast growth factor (FGF) pathways and may negatively modulate respiratory organogenesis.