

SNX12 Antibody (Center)
Affinity Purified Rabbit Polyclonal Antibody (Pab)
Catalog # AP20307c**Specification**

SNX12 Antibody (Center) - Product Information

Application	WB,E
Primary Accession	O9UMY4
Reactivity	Human
Host	Rabbit
Clonality	Polyclonal
Isotype	Rabbit IgG
Calculated MW	18885
Antigen Region	84-112

SNX12 Antibody (Center) - Additional Information**Gene ID** 29934**Other Names**

Sorting nexin-12, SNX12

Target/Specificity

This SNX12 antibody is generated from rabbits immunized with a KLH conjugated synthetic peptide between 84-112 amino acids from the Central region of human SNX12.

Dilution

WB~~1:1000

Format

Purified polyclonal antibody supplied in PBS with 0.09% (W/V) sodium azide. This antibody is purified through a protein A column, followed by peptide affinity purification.

Storage

Maintain refrigerated at 2-8°C for up to 2 weeks. For long term storage store at -20°C in small aliquots to prevent freeze-thaw cycles.

Precautions

SNX12 Antibody (Center) is for research use only and not for use in diagnostic or therapeutic procedures.

SNX12 Antibody (Center) - Protein Information**Name** SNX12**Function** May be involved in several stages of intracellular trafficking.**Cellular Location**

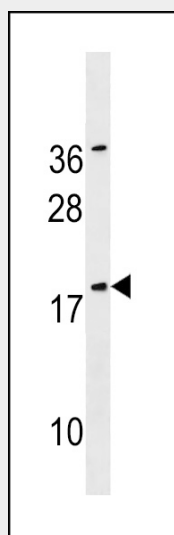
Membrane; Peripheral membrane protein; Cytoplasmic side

SNX12 Antibody (Center) - Protocols

Provided below are standard protocols that you may find useful for product applications.

- [Western Blot](#)
- [Blocking Peptides](#)
- [Dot Blot](#)
- [Immunohistochemistry](#)
- [Immunofluorescence](#)
- [Immunoprecipitation](#)
- [Flow Cytometry](#)
- [Cell Culture](#)

SNX12 Antibody (Center) - Images



SNX12 Antibody (Center) (Cat. #AP20307c) western blot analysis in A2058 cell line lysates (35ug/lane). This demonstrates the SNX12 antibody detected the SNX12 protein (arrow).

SNX12 Antibody (Center) - Background

May be involved in several stages of intracellular trafficking (By similarity).