

TAS2R43 Antibody (Center)
Affinity Purified Rabbit Polyclonal Antibody (Pab)
Catalog # AP20329c**Specification**

TAS2R43 Antibody (Center) - Product Information

Application	WB,E
Primary Accession	P59537
Reactivity	Human
Host	Rabbit
Clonality	Polyclonal
Isotype	Rabbit IgG
Calculated MW	35599
Antigen Region	135-163

TAS2R43 Antibody (Center) - Additional Information**Gene ID** 259289**Other Names**

Taste receptor type 2 member 43, T2R43, Taste receptor type 2 member 52, T2R52, TAS2R43

Target/Specificity

This TAS2R43 antibody is generated from rabbits immunized with a KLH conjugated synthetic peptide between 135-163 amino acids from the Central region of human TAS2R43.

Dilution

WB~~1:1000

Format

Purified polyclonal antibody supplied in PBS with 0.09% (W/V) sodium azide. This antibody is purified through a protein A column, followed by peptide affinity purification.

Storage

Maintain refrigerated at 2-8°C for up to 2 weeks. For long term storage store at -20°C in small aliquots to prevent freeze-thaw cycles.

Precautions

TAS2R43 Antibody (Center) is for research use only and not for use in diagnostic or therapeutic procedures.

TAS2R43 Antibody (Center) - Protein Information**Name** TAS2R43

Function Gustducin-coupled receptor implicated in the perception of bitter compounds in the oral cavity and the gastrointestinal tract. Signals through PLCB2 and the calcium-regulated cation channel TRPM5. Activated by the sulfonyl amide sweeteners saccharin and acesulfame K. In airway

epithelial cells, binding of bitter compounds increases the intracellular calcium ion concentration and stimulates ciliary beat frequency. May act as chemosensory receptors in airway epithelial cells to detect and eliminate potential noxious agents from the airways (By similarity).

Cellular Location

Membrane; Multi- pass membrane protein. Cell projection, cilium membrane. Note=In airway epithelial cells, localizes to motile cilia

Tissue Location

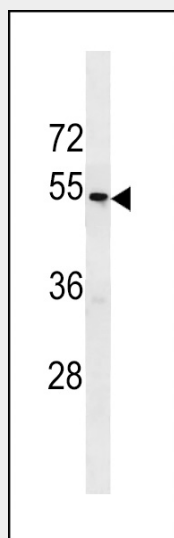
Expressed in subsets of taste receptor cells of the tongue and exclusively in gustducin-positive cells. Expressed in airway epithelia.

TAS2R43 Antibody (Center) - Protocols

Provided below are standard protocols that you may find useful for product applications.

- [Western Blot](#)
- [Blocking Peptides](#)
- [Dot Blot](#)
- [Immunohistochemistry](#)
- [Immunofluorescence](#)
- [Immunoprecipitation](#)
- [Flow Cytometry](#)
- [Cell Culture](#)

TAS2R43 Antibody (Center) - Images



TAS2R43 Antibody (Center) (Cat. #AP20329c) western blot analysis in T47D cell line lysates (35ug/lane). This demonstrates the TAS2R43 antibody detected the TAS2R43 protein (arrow).

TAS2R43 Antibody (Center) - Background

Gustducin-coupled receptor implicated in the perception of bitter compounds in the oral cavity and the gastrointestinal tract. Signals through PLCB2 and the calcium-regulated cation channel TRPM5. Activated by the sulfonyl amide sweeteners saccharin and acesulfame K. In airway epithelial cells, binding of bitter compounds increases the intracellular calcium ion concentration and stimulates ciliary beat frequency. May act as chemosensory receptors in airway epithelial cells

to detect and eliminate potential noxious agents from the airways (By similarity).