

INTS9 Antibody (C-term)
Affinity Purified Rabbit Polyclonal Antibody (Pab)
Catalog # AP20367b

Specification

INTS9 Antibody (C-term) - Product Information

Application	WB,E
Primary Accession	Q9NV88
Other Accession	Q8K114 , Q4R5Z4 , Q2KJA6
Reactivity	Human
Predicted	Bovine, Monkey, Mouse
Host	Rabbit
Clonality	Polyclonal
Isotype	Rabbit IgG
Calculated MW	73814
Antigen Region	489-515

INTS9 Antibody (C-term) - Additional Information

Gene ID 55756

Other Names

Integrator complex subunit 9, Int9, Protein related to CPSF subunits of 74 kDa, RC-74, INTS9, RC74

Target/Specificity

This INTS9 antibody is generated from rabbits immunized with a KLH conjugated synthetic peptide between 489-515 amino acids from the C-terminal region of human INTS9.

Dilution

WB~~1:1000

Format

Purified polyclonal antibody supplied in PBS with 0.09% (W/V) sodium azide. This antibody is purified through a protein A column, followed by peptide affinity purification.

Storage

Maintain refrigerated at 2-8°C for up to 2 weeks. For long term storage store at -20°C in small aliquots to prevent freeze-thaw cycles.

Precautions

INTS9 Antibody (C-term) is for research use only and not for use in diagnostic or therapeutic procedures.

INTS9 Antibody (C-term) - Protein Information

Name INTS9

Synonyms RC74

Function Component of the Integrator (INT) complex, a complex involved in the small nuclear RNAs (snRNA) U1 and U2 transcription and in their 3'-box-dependent processing. The Integrator complex is associated with the C-terminal domain (CTD) of RNA polymerase II largest subunit (POLR2A) and is recruited to the U1 and U2 snRNAs genes (Probable). Mediates recruitment of cytoplasmic dynein to the nuclear envelope, probably as component of the INT complex (PubMed:[23904267](#)).

Cellular Location

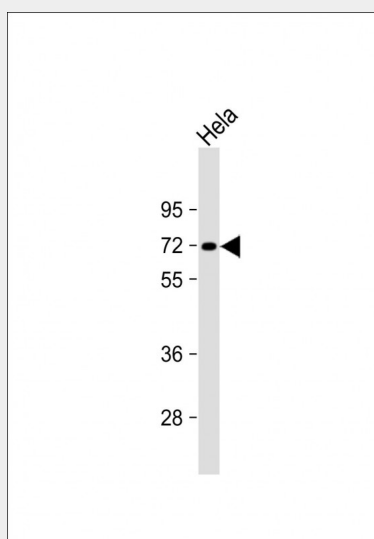
Nucleus

INTS9 Antibody (C-term) - Protocols

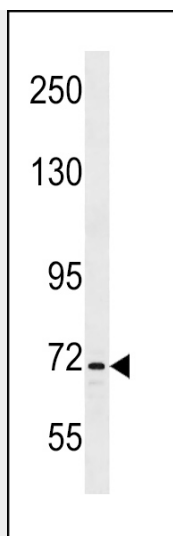
Provided below are standard protocols that you may find useful for product applications.

- [Western Blot](#)
- [Blocking Peptides](#)
- [Dot Blot](#)
- [Immunohistochemistry](#)
- [Immunofluorescence](#)
- [Immunoprecipitation](#)
- [Flow Cytometry](#)
- [Cell Culture](#)

INTS9 Antibody (C-term) - Images



Anti-INTS9 Antibody (C-term) at 1:1000 dilution + HeLa whole cell lysate Lysates/proteins at 20 µg per lane. Secondary Goat Anti-Rabbit IgG, (H+L), Peroxidase conjugated at 1/10000 dilution. Predicted band size : 74 kDa Blocking/Dilution buffer: 5% NFDm/TBST.



INTS9 Antibody (C-term) (Cat. #AP20367b) western blot analysis in K562 cell line lysates (35ug/lane). This demonstrates the INTS9 antibody detected the INTS9 protein (arrow).

INTS9 Antibody (C-term) - Background

Component of the Integrator complex, a complex involved in the small nuclear RNAs (snRNA) U1 and U2 transcription and in their 3'-box-dependent processing. The Integrator complex is associated with the C-terminal domain (CTD) of RNA polymerase II largest subunit (POLR2A) and is recruited to the U1 and U2 snRNAs genes.