

**ZNF502 Antibody (N-term)**  
**Affinity Purified Rabbit Polyclonal Antibody (Pab)**  
**Catalog # AP20389a****Specification**

---

**ZNF502 Antibody (N-term) - Product Information**

Application	WB,E
Primary Accession	<a href="#">Q8TBZ5</a>
Reactivity	Human
Host	Rabbit
Clonality	Polyclonal
Isotype	Rabbit IgG
Calculated MW	62920
Antigen Region	75-101

**ZNF502 Antibody (N-term) - Additional Information****Gene ID** 91392**Other Names**

Zinc finger protein 502, ZNF502

**Target/Specificity**

This ZNF502 antibody is generated from rabbits immunized with a KLH conjugated synthetic peptide between 75-101 amino acids from the N-terminal region of human ZNF502.

**Dilution**

WB~~1:500

**Format**

Purified polyclonal antibody supplied in PBS with 0.09% (W/V) sodium azide. This antibody is purified through a protein A column, followed by peptide affinity purification.

**Storage**

Maintain refrigerated at 2-8°C for up to 2 weeks. For long term storage store at -20°C in small aliquots to prevent freeze-thaw cycles.

**Precautions**

ZNF502 Antibody (N-term) is for research use only and not for use in diagnostic or therapeutic procedures.

**ZNF502 Antibody (N-term) - Protein Information****Name** ZNF502**Function** May be involved in transcriptional regulation.**Cellular Location**

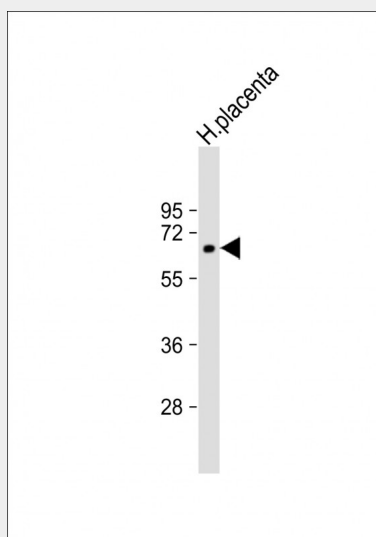
Nucleus.

### ZNF502 Antibody (N-term) - Protocols

Provided below are standard protocols that you may find useful for product applications.

- [Western Blot](#)
- [Blocking Peptides](#)
- [Dot Blot](#)
- [Immunohistochemistry](#)
- [Immunofluorescence](#)
- [Immunoprecipitation](#)
- [Flow Cytometry](#)
- [Cell Culture](#)

### ZNF502 Antibody (N-term) - Images



Anti-ZNF502 Antibody (N-term) at 1:500 dilution + human placenta lysate Lysates/proteins at 20 µg per lane. Secondary Goat Anti-Rabbit IgG, (H+L), Peroxidase conjugated at 1/10000 dilution. Predicted band size : 63 kDa Blocking/Dilution buffer: 5% NFDm/TBST.

### ZNF502 Antibody (N-term) - Background

May be involved in transcriptional regulation.