

LMAN2L Antibody (C-term)
Affinity Purified Rabbit Polyclonal Antibody (Pab)
Catalog # AP20404b

Specification

LMAN2L Antibody (C-term) - Product Information

Application	WB,E
Primary Accession	Q9H0V9
Reactivity	Human
Host	Rabbit
Clonality	Polyclonal
Isotype	Rabbit IgG
Calculated MW	39711
Antigen Region	322-348

LMAN2L Antibody (C-term) - Additional Information

Gene ID 81562

Other Names

VIP36-like protein, Lectin mannose-binding 2-like, LMAN2-like protein, LMAN2L, VIPL

Target/Specificity

This LMAN2L antibody is generated from rabbits immunized with a KLH conjugated synthetic peptide between 322-348 amino acids from the C-terminal region of human LMAN2L.

Dilution

WB~~1:1000

Format

Purified polyclonal antibody supplied in PBS with 0.09% (W/V) sodium azide. This antibody is purified through a protein A column, followed by peptide affinity purification.

Storage

Maintain refrigerated at 2-8°C for up to 2 weeks. For long term storage store at -20°C in small aliquots to prevent freeze-thaw cycles.

Precautions

LMAN2L Antibody (C-term) is for research use only and not for use in diagnostic or therapeutic procedures.

LMAN2L Antibody (C-term) - Protein Information

Name LMAN2L

Synonyms VIPL

Function May be involved in the regulation of export from the endoplasmic reticulum of a subset

of glycoproteins. May function as a regulator of ERGIC-53.

Cellular Location

Endoplasmic reticulum membrane; Single-pass type I membrane protein. Golgi apparatus membrane; Single-pass type I membrane protein. Note=Predominantly found in the endoplasmic reticulum. Partly found in the Golgi

Tissue Location

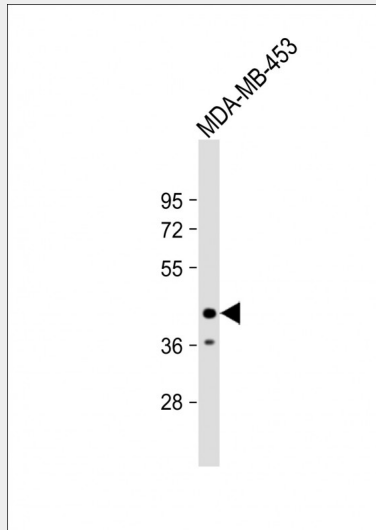
Expressed in numerous tissues. Highest expression in skeletal muscle and kidney, intermediate levels in heart, liver and placenta, low levels in brain, thymus, spleen, small intestine and lung.

LMAN2L Antibody (C-term) - Protocols

Provided below are standard protocols that you may find useful for product applications.

- [Western Blot](#)
- [Blocking Peptides](#)
- [Dot Blot](#)
- [Immunohistochemistry](#)
- [Immunofluorescence](#)
- [Immunoprecipitation](#)
- [Flow Cytometry](#)
- [Cell Culture](#)

LMAN2L Antibody (C-term) - Images



Anti-LMAN2L Antibody (C-term) at 1:1000 dilution + MDA-MB-453 whole cell lysate Lysates/proteins at 20 µg per lane. Secondary Goat Anti-Rabbit IgG, (H+L), Peroxidase conjugated at 1/10000 dilution. Predicted band size : 40 kDa Blocking/Dilution buffer: 5% NFDM/TBST.

LMAN2L Antibody (C-term) - Background

May be involved in the regulation of export from the endoplasmic reticulum of a subset of glycoproteins. May function as a regulator of ERGIC-53.