

**MTCH1 Antibody (Center)**  
**Affinity Purified Rabbit Polyclonal Antibody (Pab)**  
**Catalog # AP20405c****Specification**

---

**MTCH1 Antibody (Center) - Product Information**

Application	WB,E
Primary Accession	<a href="#">O9NZJ7</a>
Other Accession	<a href="#">Q791T5</a>
Reactivity	Human
Predicted	Mouse
Host	Rabbit
Clonality	Polyclonal
Isotype	Rabbit IgG
Calculated MW	41544
Antigen Region	151-177

**MTCH1 Antibody (Center) - Additional Information****Gene ID** 23787**Other Names**

Mitochondrial carrier homolog 1, Presenilin-associated protein, MTCH1, PSAP

**Target/Specificity**

This MTCH1 antibody is generated from rabbits immunized with a KLH conjugated synthetic peptide between 151-177 amino acids from the Central region of human MTCH1.

**Dilution**

WB~~1:1000

**Format**

Purified polyclonal antibody supplied in PBS with 0.09% (W/V) sodium azide. This antibody is purified through a protein A column, followed by peptide affinity purification.

**Storage**

Maintain refrigerated at 2-8°C for up to 2 weeks. For long term storage store at -20°C in small aliquots to prevent freeze-thaw cycles.

**Precautions**

MTCH1 Antibody (Center) is for research use only and not for use in diagnostic or therapeutic procedures.

**MTCH1 Antibody (Center) - Protein Information****Name** MTCH1 {ECO:0000303|PubMed:36264797, ECO:0000312|HGNC:HGNC:17586}**Function** Protein insertase that mediates insertion of transmembrane proteins into the

mitochondrial outer membrane (PubMed:[36264797](#)). Catalyzes insertion of proteins with alpha-helical transmembrane regions, such as signal-anchored, tail-anchored and multi-pass membrane proteins (By similarity). Does not mediate insertion of beta-barrel transmembrane proteins (By similarity). May play a role in apoptosis (PubMed:[12377771](#)).

**Cellular Location**

Mitochondrion outer membrane; Multi-pass membrane protein

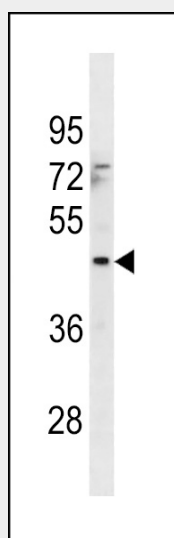
**Tissue Location**

Widely expressed with a predominant expression in brain.

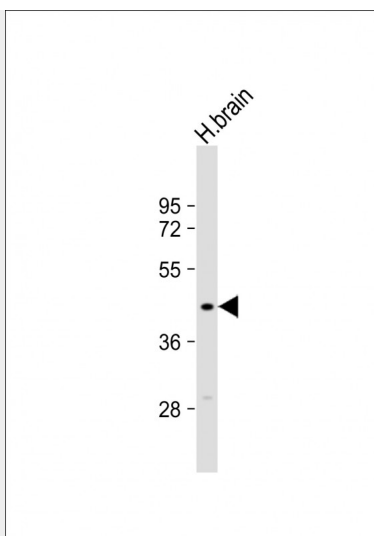
**MTCH1 Antibody (Center) - Protocols**

Provided below are standard protocols that you may find useful for product applications.

- [Western Blot](#)
- [Blocking Peptides](#)
- [Dot Blot](#)
- [Immunohistochemistry](#)
- [Immunofluorescence](#)
- [Immunoprecipitation](#)
- [Flow Cytometry](#)
- [Cell Culture](#)

**MTCH1 Antibody (Center) - Images**

MTCH1 Antibody (Center) (Cat. #AP20405c) western blot analysis in 293 cell line lysates (35ug/lane). This demonstrates the MTCH1 antibody detected the MTCH1 protein (arrow).



Anti-MTCH1 Antibody (Center) at 1:1000 dilution + human brain lysate Lysates/proteins at 20  $\mu$ g per lane. Secondary Goat Anti-Rabbit IgG, (H+L), Peroxidase conjugated at 1/10000 dilution. Predicted band size : 42 kDa Blocking/Dilution buffer: 5% NFDM/TBST.

#### **MTCH1 Antibody (Center) - Background**

Potential mitochondrial transporter. May play a role in apoptosis.