

**SAP30BP Antibody (Center)**  
**Affinity Purified Rabbit Polyclonal Antibody (Pab)**  
**Catalog # AP20471c****Specification**

---

**SAP30BP Antibody (Center) - Product Information**

Application	IF, WB,E
Primary Accession	<a href="#">Q9UHR5</a>
Other Accession	<a href="#">Q02614</a>
Reactivity	Human
Predicted	Mouse
Host	Rabbit
Clonality	Polyclonal
Isotype	Rabbit IgG
Calculated MW	33870
Antigen Region	160-188

**SAP30BP Antibody (Center) - Additional Information****Gene ID** 29115**Other Names**SAP30-binding protein, Transcriptional regulator protein HCNGP, SAP30BP  
{ECO:0000312|EMBL:AAH075921}**Target/Specificity**

This SAP30BP antibody is generated from rabbits immunized with a KLH conjugated synthetic peptide between 160-188 amino acids from the Central region of human SAP30BP.

**Dilution**

IF~~1:25

WB~~1:1000

**Format**

Purified polyclonal antibody supplied in PBS with 0.09% (W/V) sodium azide. This antibody is purified through a protein A column, followed by peptide affinity purification.

**Storage**

Maintain refrigerated at 2-8°C for up to 2 weeks. For long term storage store at -20°C in small aliquots to prevent freeze-thaw cycles.

**Precautions**

SAP30BP Antibody (Center) is for research use only and not for use in diagnostic or therapeutic procedures.

**SAP30BP Antibody (Center) - Protein Information****Name** SAP30BP {ECO:0000312|EMBL:AAH07592.1}

**Function** Plays a role in transcriptional repression by promoting histone deacetylase activity, leading to deacetylation of histone H3 (PubMed:[21221920](#)). May be involved in the regulation of beta-2- microglobulin genes (By similarity).

**Cellular Location**

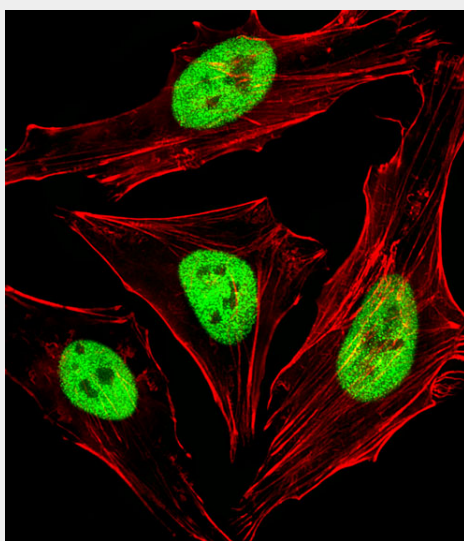
Nucleus.

**SAP30BP Antibody (Center) - Protocols**

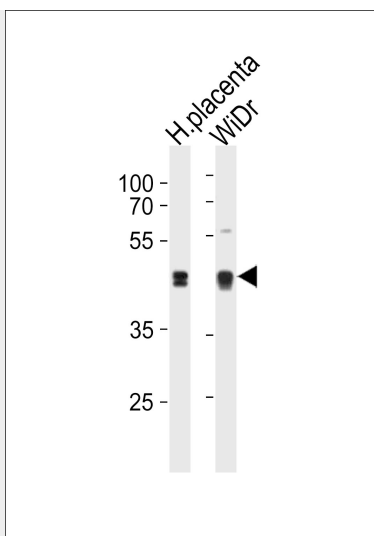
Provided below are standard protocols that you may find useful for product applications.

- [Western Blot](#)
- [Blocking Peptides](#)
- [Dot Blot](#)
- [Immunohistochemistry](#)
- [Immunofluorescence](#)
- [Immunoprecipitation](#)
- [Flow Cytometry](#)
- [Cell Culture](#)

**SAP30BP Antibody (Center) - Images**



Fluorescent image of HeLa cells stained with SAP30BP Antibody (Center)(Cat#AP20471C). AP20471C was diluted at 1:25 dilution. An Alexa Fluor 488-conjugated goat anti-rabbit IgG at 1:400 dilution was used as the secondary antibody (green). Cytoplasmic actin was counterstained with Alexa Fluor® 555 conjugated with Phalloidin (red).



SAP30BP Antibody (Center) (Cat. #AP20471c) western blot analysis in WiDr cell line and human placenta tissue lysates (35ug/lane). This demonstrates the SAP30BP antibody detected the SAP30BP protein (arrow).

#### **SAP30BP Antibody (Center) - Background**

Induces cell death. May act as a transcriptional corepressor of a gene related to cell survival. May be involved in the regulation of beta-2-microglobulin genes.

#### **SAP30BP Antibody (Center) - References**

- Li J.-F., et al. J. Biochem. 136:169-176(2004).
- Gou D., et al. Submitted (MAR-2002) to the EMBL/GenBank/DDBJ databases.
- Ding J.B., et al. Submitted (APR-2002) to the EMBL/GenBank/DDBJ databases.
- Hu R.-M., et al. Proc. Natl. Acad. Sci. U.S.A. 97:9543-9548(2000).
- Ota T., et al. Nat. Genet. 36:40-45(2004).