

USP51 Antibody (Center)
Affinity Purified Rabbit Polyclonal Antibody (Pab)
Catalog # AP20473c

Specification

USP51 Antibody (Center) - Product Information

Application	IF, WB,E
Primary Accession	Q70EK9
Reactivity	Human
Host	Rabbit
Clonality	Polyclonal
Isotype	Rabbit IgG
Calculated MW	79756
Antigen Region	278-307

USP51 Antibody (Center) - Additional Information

Gene ID 158880

Other Names

Ubiquitin carboxyl-terminal hydrolase 51, Deubiquitinating enzyme 51, Ubiquitin thioesterase 51, Ubiquitin-specific-processing protease 51, USP51

Target/Specificity

This USP51 antibody is generated from rabbits immunized with a KLH conjugated synthetic peptide between 278-307 amino acids from the Central region of human USP51.

Dilution

IF~~1:25

WB~~1:1000

Format

Purified polyclonal antibody supplied in PBS with 0.09% (W/V) sodium azide. This antibody is purified through a protein A column, followed by peptide affinity purification.

Storage

Maintain refrigerated at 2-8°C for up to 2 weeks. For long term storage store at -20°C in small aliquots to prevent freeze-thaw cycles.

Precautions

USP51 Antibody (Center) is for research use only and not for use in diagnostic or therapeutic procedures.

USP51 Antibody (Center) - Protein Information

Name USP51 ([HGNC:23086](#))

Function Specifically deubiquitinates 'Lys-14' (H2AK13Ub) and 'Lys- 16'(H2AK15Ub) of histone

H2A regulating the DNA damage response at double-strand breaks (DSBs) (PubMed:[27083998](#)). USP51 is recruited to chromatin after DNA damage and regulates the dynamic assembly/disassembly of TP53BP1 and BRCA1. Exhibits also activity for 'Lys-27' or 'Lys-63'-linked di-ubiquitin (PubMed:[27083998](#)).

Cellular Location

Chromosome. Note=Upon DNA damage, chromatin-bound USP51 disassociates from chromatin immediately following DNA damage and reassociates with chromatin following DNA repair.

Tissue Location

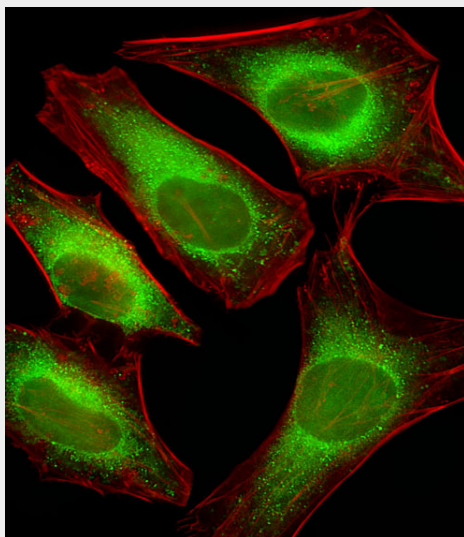
Expressed in prostate, brain, lung, aorta and kidney.

USP51 Antibody (Center) - Protocols

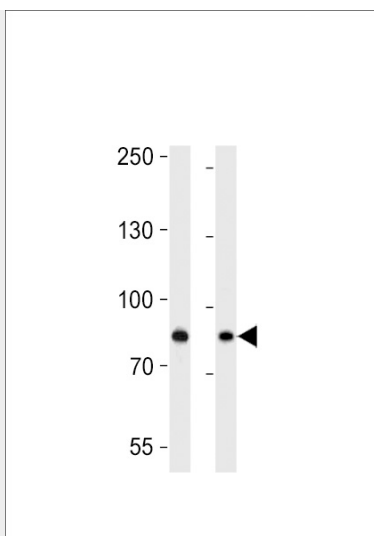
Provided below are standard protocols that you may find useful for product applications.

- [Western Blot](#)
- [Blocking Peptides](#)
- [Dot Blot](#)
- [Immunohistochemistry](#)
- [Immunofluorescence](#)
- [Immunoprecipitation](#)
- [Flow Cytometry](#)
- [Cell Culture](#)

USP51 Antibody (Center) - Images



Fluorescent image of HeLa cells stained with USP51 Antibody (Center)(Cat#AP20473C). AP20473C was diluted at 1:25 dilution. An Alexa Fluor 488-conjugated goat anti-rabbit IgG at 1:400 dilution was used as the secondary antibody (green). Cytoplasmic actin was counterstained with Alexa Fluor® 555 conjugated with Phalloidin (red).



USP51 Antibody (Center) (Cat. #AP20473c) western blot analysis in HepG2, MCF-7 cell line lysates (35ug/lane). This demonstrates the USP51 antibody detected the USP51 protein (arrow).

USP51 Antibody (Center) - References

Quesada V., et al. Biochem. Biophys. Res. Commun. 314:54-62(2004).
Ross M.T., et al. Nature 434:325-337(2005).
Puente X.S., et al. Genome Res. 14:609-622(2004).