

R Cebpd Antibody (Center)
Affinity Purified Rabbit Polyclonal Antibody (Pab)
Catalog # AP20492c

Specification

R Cebpd Antibody (Center) - Product Information

Application	WB,E
Primary Accession	Q03484
Reactivity	Human, Mouse, Rat
Host	Rabbit
Clonality	Polyclonal
Isotype	Rabbit IgG
Calculated MW	28600
Antigen Region	161-189

R Cebpd Antibody (Center) - Additional Information

Gene ID 25695

Other Names

CCAAT/enhancer-binding protein delta, C/EBP delta, Transcription factor CELF, Cebpd, Celf

Target/Specificity

This Rat Cebpd antibody is generated from rabbits immunized with a KLH conjugated synthetic peptide between 161-189 amino acids from the Central region of rat Cebpd.

Dilution

WB~~1:1000

Format

Purified polyclonal antibody supplied in PBS with 0.09% (W/V) sodium azide. This antibody is purified through a protein A column, followed by peptide affinity purification.

Storage

Maintain refrigerated at 2-8°C for up to 2 weeks. For long term storage store at -20°C in small aliquots to prevent freeze-thaw cycles.

Precautions

R Cebpd Antibody (Center) is for research use only and not for use in diagnostic or therapeutic procedures.

R Cebpd Antibody (Center) - Protein Information

Name Cebpd

Synonyms Celf

Function Transcription activator that recognizes two different DNA motifs: the CCAAT homology

common to many promoters and the enhanced core homology common to many enhancers (PubMed:[1714459](#)). Important transcription factor regulating the expression of genes involved in immune and inflammatory responses. Transcriptional activator that enhances IL6 transcription alone and as heterodimer with CEBPB (By similarity).

Cellular Location

Nucleus.

Tissue Location

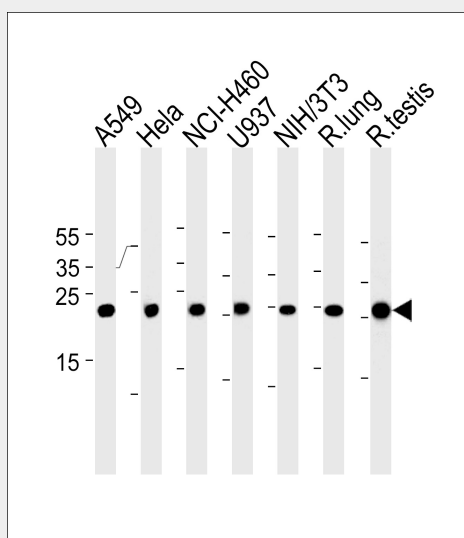
Ubiquitously expressed.

R Cebpd Antibody (Center) - Protocols

Provided below are standard protocols that you may find useful for product applications.

- [Western Blot](#)
- [Blocking Peptides](#)
- [Dot Blot](#)
- [Immunohistochemistry](#)
- [Immunofluorescence](#)
- [Immunoprecipitation](#)
- [Flow Cytometry](#)
- [Cell Culture](#)

R Cebpd Antibody (Center) - Images



Rat Cebpd Antibody (Center) (Cat. #AP20492c) western blot analysis in A549, Hela, NCI-H460, U-937, mouse NIH/3T3 cell line and rat lung, testis tissue lysates (35ug/lane). This demonstrates the Rat Cebpd antibody detected the Rat Cebpd protein (arrow).

R Cebpd Antibody (Center) - Background

C/EBP is a DNA-binding protein that recognizes two different motifs: the CCAAT homology common to many promoters and the enhanced core homology common to many enhancers. Important transcriptional activator in the regulation of genes involved in immune and inflammatory responses, may play an important role in the regulation of the several genes associated with activation and/or differentiation of macrophages (By similarity).

R Cebpd Antibody (Center) - References

Kageyama R., et al. J. Biol. Chem. 266:15525-15531(1991).