

M Abi3 Antibody (C-term)
Affinity Purified Rabbit Polyclonal Antibody (Pab)
Catalog # AP20504b

Specification

M Abi3 Antibody (C-term) - Product Information

| | |
|-------------------|------------------------|
| Application | WB,E |
| Primary Accession | Q8BYZ1 |
| Reactivity | Mouse |
| Host | Rabbit |
| Clonality | Polyclonal |
| Isotype | Rabbit IgG |
| Antigen Region | 300-329 |

M Abi3 Antibody (C-term) - Additional Information

Gene ID 66610

Other Names

ABI gene family member 3, New molecule including SH3, Nesh, Abi3, Nesh

Target/Specificity

This Mouse Abi3 antibody is generated from rabbits immunized with a KLH conjugated synthetic peptide between 300-329 amino acids from the C-terminal region of mouse Abi3.

Dilution

WB~~1:1000

Format

Purified polyclonal antibody supplied in PBS with 0.09% (W/V) sodium azide. This antibody is purified through a protein A column, followed by peptide affinity purification.

Storage

Maintain refrigerated at 2-8°C for up to 2 weeks. For long term storage store at -20°C in small aliquots to prevent freeze-thaw cycles.

Precautions

M Abi3 Antibody (C-term) is for research use only and not for use in diagnostic or therapeutic procedures.

M Abi3 Antibody (C-term) - Protein Information

Name Abi3

Synonyms Nesh

Function Inhibits ectopic tumor cell metastasis of SRD cells. In vitro, reduces cell motility.

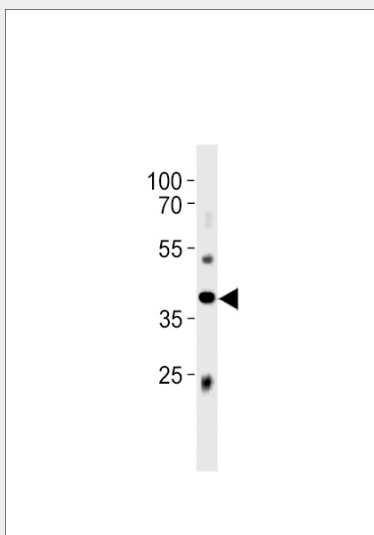
Cellular Location

Cytoplasm.

M Abi3 Antibody (C-term) - Protocols

Provided below are standard protocols that you may find useful for product applications.

- [Western Blot](#)
- [Blocking Peptides](#)
- [Dot Blot](#)
- [Immunohistochemistry](#)
- [Immunofluorescence](#)
- [Immunoprecipitation](#)
- [Flow Cytometry](#)
- [Cell Culture](#)

M Abi3 Antibody (C-term) - Images

Mouse Abi3 Antibody (C-term) (Cat. #AP20504b) western blot analysis in mouse liver tissue lysates (35ug/lane). This demonstrates the Abi3 antibody detected the Abi3 protein (arrow).

M Abi3 Antibody (C-term) - Background

Inhibits ectopic tumor cell metastasis of SRD cells. In vitro, reduces cell motility.

M Abi3 Antibody (C-term) - References

Carninci P., et al. Science 309:1559-1563(2005).
Church D.M., et al. PLoS Biol. 7:E1000112-E1000112(2009).
Mural R.J., et al. Submitted (JUL-2005) to the EMBL/GenBank/DBJ databases.
Ichigotani Y., et al. Cancer Res. 62:2215-2219(2002).