

POLR2J3 Antibody (N-term)
Purified Rabbit Polyclonal Antibody (Pab)
Catalog # AP20548a**Specification**

POLR2J3 Antibody (N-term) - Product Information

Application	WB,E
Primary Accession	Q9H1A7
Other Accession	Q9GZM3
Reactivity	Human
Host	Rabbit
Clonality	Polyclonal
Isotype	Rabbit IgG
Calculated MW	13074
Antigen Region	1-25

POLR2J3 Antibody (N-term) - Additional Information**Gene ID** 548644**Other Names**

DNA-directed RNA polymerase II subunit RPB11-b2, RNA polymerase II subunit B11-b2, RPB11b2, DNA-directed RNA polymerase II subunit J3, POLR2J3

Target/Specificity

This POLR2J3 antibody is generated from a rabbit immunized with a KLH conjugated synthetic peptide between 1-25 amino acids from the N-terminal region of human POLR2J3.

Dilution

WB~~1:1000

Format

Purified polyclonal antibody supplied in PBS with 0.09% (W/V) sodium azide. This antibody is purified through a protein A column, followed by peptide affinity purification.

Storage

Maintain refrigerated at 2-8°C for up to 2 weeks. For long term storage store at -20°C in small aliquots to prevent freeze-thaw cycles.

Precautions

POLR2J3 Antibody (N-term) is for research use only and not for use in diagnostic or therapeutic procedures.

POLR2J3 Antibody (N-term) - Protein Information**Name** POLR2J3**Function** DNA-dependent RNA polymerase catalyzes the transcription of DNA into RNA using the

four ribonucleoside triphosphates as substrates. Component of RNA polymerase II which synthesizes mRNA precursors and many functional non-coding RNAs. Pol II is the central component of the basal RNA polymerase II transcription machinery. It is composed of mobile elements that move relative to each other. RPB11 is part of the core element with the central large cleft (By similarity).

Cellular Location

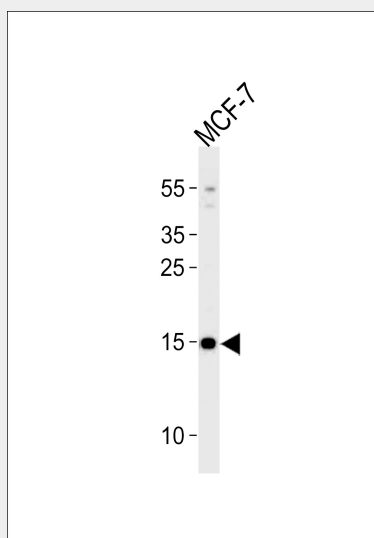
Nucleus.

POLR2J3 Antibody (N-term) - Protocols

Provided below are standard protocols that you may find useful for product applications.

- [Western Blot](#)
- [Blocking Peptides](#)
- [Dot Blot](#)
- [Immunohistochemistry](#)
- [Immunofluorescence](#)
- [Immunoprecipitation](#)
- [Flow Cytometry](#)
- [Cell Culture](#)

POLR2J3 Antibody (N-term) - Images



Western blot analysis of lysate from MCF-7 cell line, using POLR2J3 Antibody (N-term) (Cat. #AP20548a). AP20548a was diluted at 1:1000 at each lane. A goat anti-rabbit IgG H&L (HRP) at 1:5000 dilution was used as the secondary antibody. Lysate at 35 µg per lane.

POLR2J3 Antibody (N-term) - Background

DNA-dependent RNA polymerase catalyzes the transcription of DNA into RNA using the four ribonucleoside triphosphates as substrates. Component of RNA polymerase II which synthesizes mRNA precursors and many functional non-coding RNAs. Pol II is the central component of the basal RNA polymerase II transcription machinery. It is composed of mobile elements that move relative to each other. RPB11 is part of the core element with the central large cleft (By similarity).

POLR2J3 Antibody (N-term) - References

Grandemange S.,et al.BMC Mol. Biol. 2:14-14(2001).
Hillier L.W.,et al.Nature 424:157-164(2003).