

JAM3 Antibody (C-term)
Purified Rabbit Polyclonal Antibody (Pab)
Catalog # AP20552b**Specification**

JAM3 Antibody (C-term) - Product Information

Application	WB,E
Primary Accession	Q9BX67
Reactivity	Human, Mouse, Rat
Host	Rabbit
Clonality	Polyclonal
Isotype	Rabbit IgG
Calculated MW	35020

JAM3 Antibody (C-term) - Additional Information**Gene ID** 83700**Other Names**

Junctional adhesion molecule C, JAM-C, JAM-2, Junctional adhesion molecule 3, JAM-3, JAM3

Target/Specificity

This JAM3 antibody is generated from a rabbit immunized with a KLH conjugated synthetic peptide between 261-295 amino acids from the C-terminal region of human JAM3.

Dilution

WB~~1:1000

Format

Purified polyclonal antibody supplied in PBS with 0.09% (W/V) sodium azide. This antibody is purified through a protein A column, followed by peptide affinity purification.

Storage

Maintain refrigerated at 2-8°C for up to 2 weeks. For long term storage store at -20°C in small aliquots to prevent freeze-thaw cycles.

Precautions

JAM3 Antibody (C-term) is for research use only and not for use in diagnostic or therapeutic procedures.

JAM3 Antibody (C-term) - Protein Information**Name** JAM3

Function Junctional adhesion protein that mediates heterotypic cell- cell interactions with its cognate receptor JAM2 to regulate different cellular processes (PubMed:[11590146](#), PubMed:[11823489](#)). Plays a role in homing and mobilization of hematopoietic stem and progenitor cells within the bone marrow. At the surface of bone marrow stromal cells, it contributes to the

retention of the hematopoietic stem and progenitor cells expressing JAM3 (PubMed:[11590146](#), PubMed:[24357068](#)). Plays a central role in leukocytes extravasation by facilitating transmigration through the endothelium (By similarity). Plays a role in spermatogenesis where JAM2 and JAM3, which are respectively expressed by Sertoli and germ cells, mediate an interaction between both cell types and play an essential role in the anchorage of germ cells onto Sertoli cells and the assembly of cell polarity complexes during spermatid differentiation (By similarity). Also functions as a counter- receptor for ITGAM, mediating leukocyte-platelet interactions and is involved in the regulation of transepithelial migration of polymorphonuclear neutrophils (PMN) (PubMed:[12208882](#), PubMed:[15194813](#)). Plays a role in angiogenesis (PubMed:[23255084](#)). Plays a role in the regulation of cell migration (Probable). During myogenesis, it is involved in myocyte fusion (By similarity).

Cellular Location

Cell membrane; Single-pass type I membrane protein. Cell junction. Cell junction, desmosome. Cell junction, tight junction. Note=Detected in the acrosome region in developing spermatids (By similarity). In epithelial cells, it is expressed at desmosomes but not at tight junctions (PubMed:15194813) Localizes at the cell surface of endothelial cells; treatment of endothelial cells with vascular endothelial growth factor stimulates recruitment of JAM3 to cell-cell contacts (PubMed:15994945) {ECO:0000250|UniProtKB:Q9D8B7}

Tissue Location

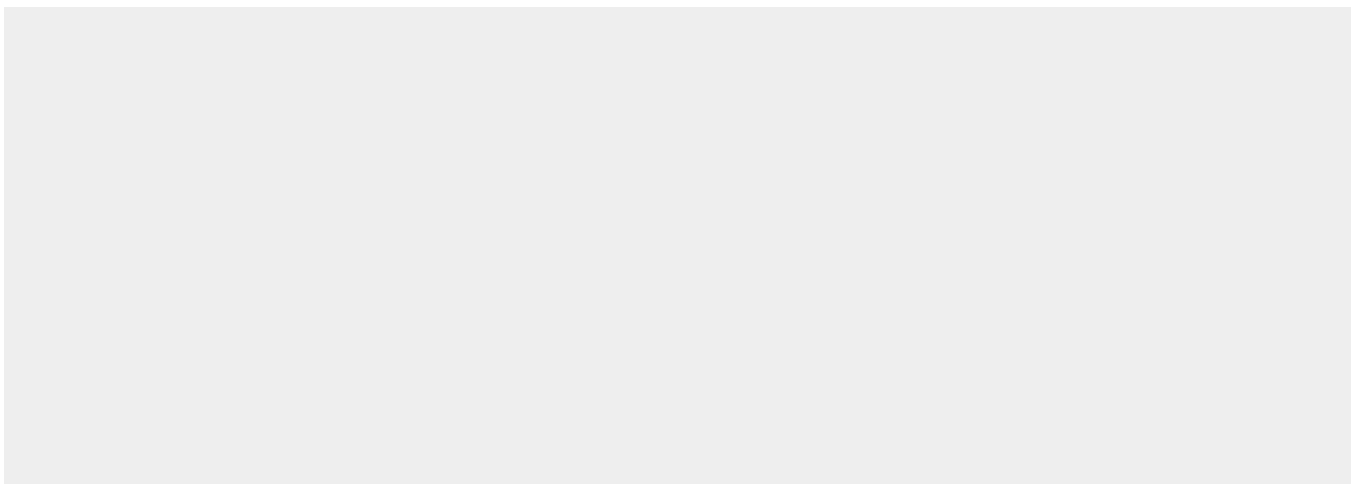
Detected on round and elongated spermatids (at protein level) (PubMed:15372036). Highest expression in placenta, brain and kidney. Significant expression is detected on platelets. Expressed in intestinal mucosa cells. Expressed in the vascular endothelium Found in serum (at protein level). Also detected in the synovial fluid of patients with rheumatoid arthritis, psoriatic arthritis or osteoarthritis (at protein level).

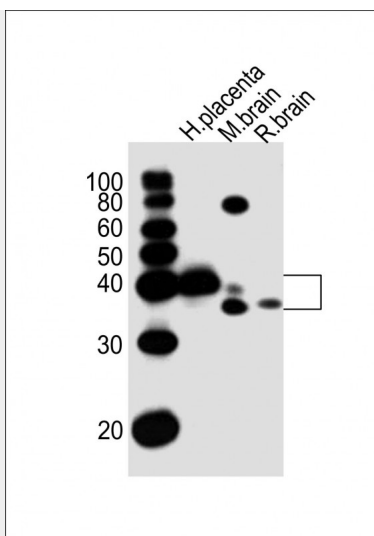
JAM3 Antibody (C-term) - Protocols

Provided below are standard protocols that you may find useful for product applications.

- [Western Blot](#)
- [Blocking Peptides](#)
- [Dot Blot](#)
- [Immunohistochemistry](#)
- [Immunofluorescence](#)
- [Immunoprecipitation](#)
- [Flow Cytometry](#)
- [Cell Culture](#)

JAM3 Antibody (C-term) - Images





All lanes : Anti-JAM3 Antibody (C-term) at 1:1000 dilution Lane 1: human placenta lysates Lane 2: mouse brain lysates Lane 3: rat brain lysates Lane 4: rat brain lysates Lysates/proteins at 20 µg per lane. Secondary Goat Anti-Rabbit IgG, (H+L), Peroxidase conjugated at 1/10000 dilution Predicted band size : 35 kDa Blocking/Dilution buffer: 5% NFDM/TBST.

JAM3 Antibody (C-term) - Background

Participates in cell-cell adhesion. It is a counter- receptor for ITGAM, mediating leukocyte-platelet interactions and is involved in the regulation of transepithelial migration of polymorphonuclear neutrophils (PMN). The soluble form is a mediator of angiogenesis.

JAM3 Antibody (C-term) - References

Arrate M.P.,et al.J. Biol. Chem. 276:45826-45832(2001).
Aurrand-Lions M.A.,et al.Blood 98:3699-3707(2001).
Santoso S.,et al.J. Exp. Med. 196:679-691(2002).
Phillips H.M.,et al.Genomics 79:475-478(2002).
Ota T.,et al.Nat. Genet. 36:40-45(2004).