

**PSEN2(Presenilin-2 CTF subunit) Antibody (C-term)**  
**Purified Rabbit Polyclonal Antibody (Pab)**  
**Catalog # AP20576c****Specification**

---

**PSEN2(Presenilin-2 CTF subunit) Antibody (C-term) - Product Information**

Application	WB, IHC-P,E
Primary Accession	<a href="#">P49810</a>
Other Accession	<a href="#">O88777</a> , <a href="#">Q0MS45</a> , <a href="#">Q61144</a> , <a href="#">Q9XT96</a>
Reactivity	Human
Predicted	Bovine, Mouse, Pig, Rat
Host	Rabbit
Clonality	Polyclonal
Isotype	Rabbit IgG

**PSEN2(Presenilin-2 CTF subunit) Antibody (C-term) - Additional Information****Gene ID** 5664**Other Names**

Presenilin-2, PS-2, 3423-, AD3LP, AD5, E5-1, STM-2, Presenilin-2 NTF subunit, Presenilin-2 CTF subunit, PSEN2, AD4, PS2, PSNL2, STM2

**Target/Specificity**

This PSEN2(Presenilin-2 CTF subunit) antibody is generated from a rabbit immunized with a KLH conjugated synthetic peptide between 401-445 amino acids from the C-terminal region of human PSEN2(Presenilin-2 CTF subunit).

**Dilution**

WB~~1:1000

IHC-P~~1:25

**Format**

Purified polyclonal antibody supplied in PBS with 0.09% (W/V) sodium azide. This antibody is purified through a protein A column, followed by peptide affinity purification.

**Storage**

Maintain refrigerated at 2-8°C for up to 2 weeks. For long term storage store at -20°C in small aliquots to prevent freeze-thaw cycles.

**Precautions**

PSEN2(Presenilin-2 CTF subunit) Antibody (C-term) is for research use only and not for use in diagnostic or therapeutic procedures.

**PSEN2(Presenilin-2 CTF subunit) Antibody (C-term) - Protein Information****Name** PSEN2

**Synonyms** AD4, PS2, PSNL2, STM2

**Function** Probable catalytic subunit of the gamma-secretase complex, an endoprotease complex that catalyzes the intramembrane cleavage of integral membrane proteins such as Notch receptors and APP (amyloid- beta precursor protein). Requires the other members of the gamma-secretase complex to have a protease activity. May play a role in intracellular signaling and gene expression or in linking chromatin to the nuclear membrane. May function in the cytoplasmic partitioning of proteins. The holoprotein functions as a calcium-leak channel that allows the passive movement of calcium from endoplasmic reticulum to cytosol and is involved in calcium homeostasis (PubMed:[16959576](#)). Is a regulator of mitochondrion-endoplasmic reticulum membrane tethering and modulates calcium ions shuttling between ER and mitochondria (PubMed:[21285369](#)).

**Cellular Location**

Endoplasmic reticulum membrane; Multi-pass membrane protein. Golgi apparatus membrane; Multi-pass membrane protein

**Tissue Location**

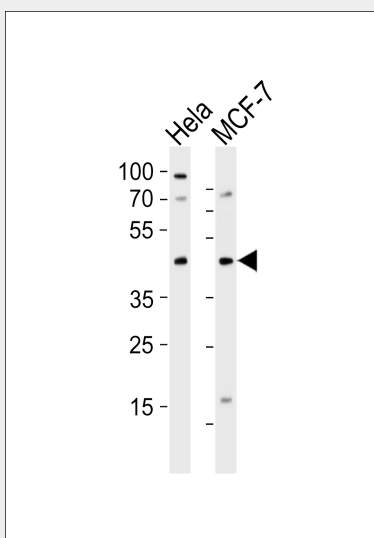
Isoform 1 is seen in the placenta, skeletal muscle and heart while isoform 2 is seen in the heart, brain, placenta, liver, skeletal muscle and kidney.

**PSEN2(Presenilin-2 CTF subunit) Antibody (C-term) - Protocols**

Provided below are standard protocols that you may find useful for product applications.

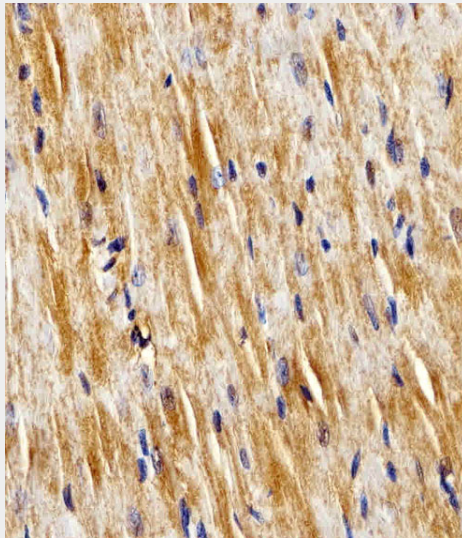
- [Western Blot](#)
- [Blocking Peptides](#)
- [Dot Blot](#)
- [Immunohistochemistry](#)
- [Immunofluorescence](#)
- [Immunoprecipitation](#)
- [Flow Cytometry](#)
- [Cell Culture](#)

**PSEN2(Presenilin-2 CTF subunit) Antibody (C-term) - Images**

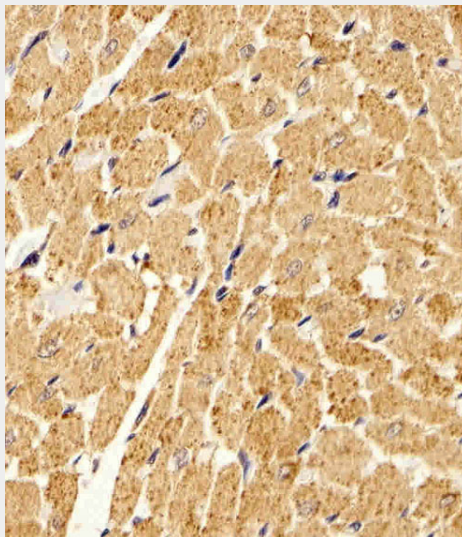


Western blot analysis of lysates from HeLa, MCF-7 cell line (from left to right), using

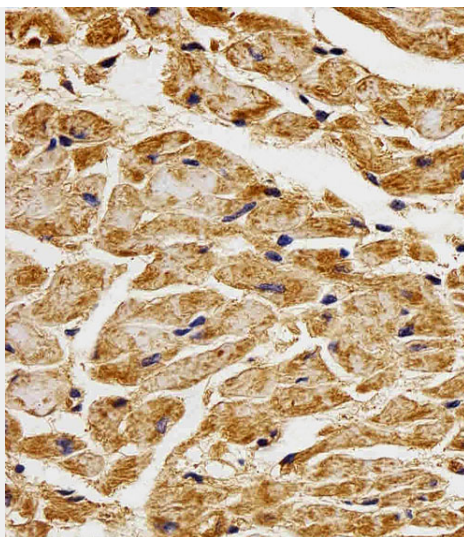
PSEN2(Presenilin-2 CTF subunit) Antibody (C-term) (Cat. #AP20576c). AP20576c was diluted at 1:1000 at each lane. A goat anti-rabbit IgG H&L(HRP) at 1:5000 dilution was used as the secondary antibody. Lysates at 35ug per lane.



Immunohistochemical analysis of paraffin-embedded M.heart section using PSEN2(Presenilin-2 CTF subunit) Antibody (C-term)(Cat#AP20576c). AP20576c was diluted at 1:25 dilution. A peroxidase-conjugated goat anti-rabbit IgG at 1:400 dilution was used as the secondary antibody, followed by DAB staining.



Immunohistochemical analysis of paraffin-embedded R.heart section using PSEN2(Presenilin-2 CTF subunit) Antibody (C-term)(Cat#AP20576c). AP20576c was diluted at 1:25 dilution. A peroxidase-conjugated goat anti-rabbit IgG at 1:400 dilution was used as the secondary antibody, followed by DAB staining.



Immunohistochemical analysis of paraffin-embedded H.heart section using PSEN2(Presenilin-2 CTF subunit) Antibody (C-term)(Cat#AP20576c). AP20576c was diluted at 1:25 dilution. A peroxidase-conjugated goat anti-rabbit IgG at 1:400 dilution was used as the secondary antibody, followed by DAB staining.

#### **PSEN2(Presenilin-2 CTF subunit) Antibody (C-term) - Background**

Probable catalytic subunit of the gamma-secretase complex, an endoprotease complex that catalyzes the intramembrane cleavage of integral membrane proteins such as Notch receptors and APP (beta-amyloid precursor protein). Requires the other members of the gamma-secretase complex to have a protease activity. May play a role in intracellular signaling and gene expression or in linking chromatin to the nuclear membrane. May function in the cytoplasmic partitioning of proteins.

#### **PSEN2(Presenilin-2 CTF subunit) Antibody (C-term) - References**

Levy-Lahad E.,et al.Science 269:973-977(1995).  
Rogaev E.I.,et al.Nature 376:775-778(1995).  
Li J.,et al.Proc. Natl. Acad. Sci. U.S.A. 92:12180-12184(1995).  
Levy-Lahad E.,et al.Genomics 34:198-204(1996).  
Kalnina N.,et al.Submitted (MAY-2003) to the EMBL/GenBank/DDBJ databases.