

**REG3A Antibody (C-term)**  
**Purified Rabbit Polyclonal Antibody (Pab)**  
**Catalog # AP20597c****Specification**

---

**REG3A Antibody (C-term) - Product Information**

Application	WB, FC,E
Primary Accession	<a href="#">Q06141</a>
Reactivity	Human
Host	Rabbit
Clonality	Polyclonal
Isotype	Rabbit IgG
Calculated MW	19395

**REG3A Antibody (C-term) - Additional Information****Gene ID** 5068**Other Names**

Regenerating islet-derived protein 3-alpha, REG-3-alpha, Hepatointestinal pancreatic protein, HIP/PAP, Human proislet peptide, Pancreatitis-associated protein 1, Regenerating islet-derived protein III-alpha, Reg III-alpha, Regenerating islet-derived protein 3-alpha 165 kDa form, Regenerating islet-derived protein 3-alpha 15 kDa form, REG3A, HIP, PAP, PAP1

**Target/Specificity**

This REG3A antibody is generated from a rabbit immunized with a KLH conjugated synthetic peptide between 129-163 amino acids from the C-terminal region of human REG3A.

**Dilution**

WB~~1:1000  
FC~~1:25

**Format**

Purified polyclonal antibody supplied in PBS with 0.09% (W/V) sodium azide. This antibody is purified through a protein A column, followed by peptide affinity purification.

**Storage**

Maintain refrigerated at 2-8°C for up to 2 weeks. For long term storage store at -20°C in small aliquots to prevent freeze-thaw cycles.

**Precautions**

REG3A Antibody (C-term) is for research use only and not for use in diagnostic or therapeutic procedures.

**REG3A Antibody (C-term) - Protein Information****Name** REG3A ([HGNC:8601](#))

**Function** [Regenerating islet-derived protein 3-alpha 15 kDa form]: Bactericidal C-type lectin which acts exclusively against Gram-positive bacteria and mediates bacterial killing by binding to surface-exposed carbohydrate moieties of peptidoglycan (PubMed:[16931762](#)). Binds membrane phospholipids and kills bacteria by forming a hexameric membrane-permeabilizing oligomeric pore (PubMed:[24256734](#)).

#### **Cellular Location**

Secreted. Note=Found in the apical region of pancreatic acinar cells

#### **Tissue Location**

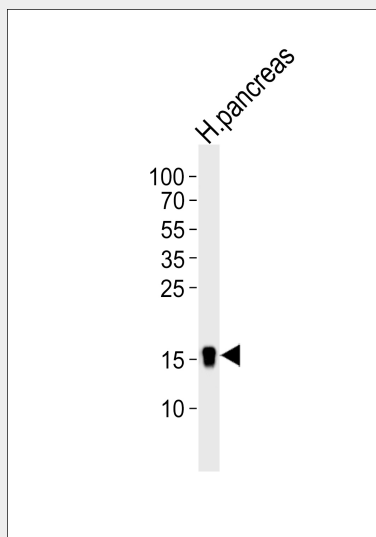
Expressed by keratinocytes (PubMed:27830702). Highly expressed in epidermal keratinocytes of psoriasis patients (at protein level) (PubMed:22727489). Constitutively expressed in intestine. Low expression is found in healthy pancreas. Overexpressed during the acute phase of pancreatitis and in some patients with chronic pancreatitis (PubMed:1469087).

### **REG3A Antibody (C-term) - Protocols**

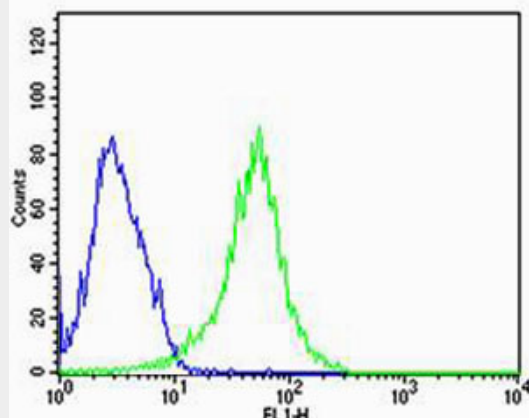
Provided below are standard protocols that you may find useful for product applications.

- [Western Blot](#)
- [Blocking Peptides](#)
- [Dot Blot](#)
- [Immunohistochemistry](#)
- [Immunofluorescence](#)
- [Immunoprecipitation](#)
- [Flow Cytometry](#)
- [Cell Culture](#)

### **REG3A Antibody (C-term) - Images**



Western blot analysis of lysate from human pancreas tissue lysate, using REG3A Antibody (C-term)(Cat. #AP20597c). AP20597c was diluted at 1:1000. A goat anti-rabbit IgG H&L(HRP) at 1:5000 dilution was used as the secondary antibody. Lysate at 35ug.



Flow cytometric analysis of HepG2 cells using REG3A Antibody (C-term)(green, Cat#AP20597c) compared to an isotype control of rabbit IgG(blue). AP20597c was diluted at 1:25 dilution. An Alexa Fluor® 488 goat anti-rabbit IgG at 1:400 dilution was used as the secondary antibody.

### **REG3A Antibody (C-term) - Background**

Bactericidal C-type lectin which acts exclusively against Gram-positive bacteria and mediates bacterial killing by binding to surface-exposed carbohydrate moieties of peptidoglycan. Regulates keratinocyte proliferation and differentiation after skin injury via activation of EXTL3-PI3K-AKT signaling pathway.

### **REG3A Antibody (C-term) - References**

Itoh T.,et al.Biochim. Biophys. Acta 1172:184-186(1993).  
Orelle B.,et al.J. Clin. Invest. 90:2284-2291(1992).  
Lasserre C.,et al.Cancer Res. 52:5089-5095(1992).  
Duseti N.J.,et al.Genomics 19:108-114(1994).  
Lasserre C.,et al.Eur. J. Biochem. 224:29-38(1994).