

LYZ Antibody (C-term)
Purified Rabbit Polyclonal Antibody (Pab)
Catalog # AP20609C**Specification**

LYZ Antibody (C-term) - Product Information

Application	IHC-P,E
Primary Accession	P61626
Reactivity	Human
Host	Rabbit
Clonality	Polyclonal
Isotype	Rabbit IgG
Calculated MW	16537

LYZ Antibody (C-term) - Additional Information**Gene ID** 4069**Other Names**

Lysozyme C, 4-beta-N-acetylmuramidase C, LYZ, LZM

Target/Specificity

This LYZ antibody is generated from a rabbit immunized with a KLH conjugated synthetic peptide between 119-154 amino acids from the C-terminal region of human LYZ.

Dilution

IHC-P~~1:25

Format

Purified polyclonal antibody supplied in PBS with 0.09% (W/V) sodium azide. This antibody is purified through a protein A column, followed by peptide affinity purification.

Storage

Maintain refrigerated at 2-8°C for up to 2 weeks. For long term storage store at -20°C in small aliquots to prevent freeze-thaw cycles.

Precautions

LYZ Antibody (C-term) is for research use only and not for use in diagnostic or therapeutic procedures.

LYZ Antibody (C-term) - Protein Information**Name** LYZ**Synonyms** LZM

Function Lysozymes have primarily a bacteriolytic function; those in tissues and body fluids are associated with the monocyte-macrophage system and enhance the activity of immunoagents.

Cellular Location

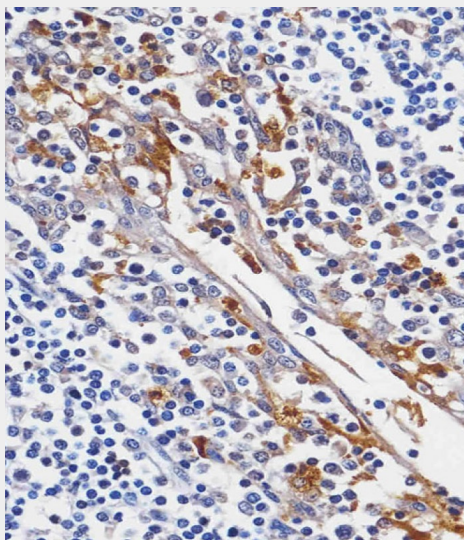
Secreted.

LYZ Antibody (C-term) - Protocols

Provided below are standard protocols that you may find useful for product applications.

- [Western Blot](#)
- [Blocking Peptides](#)
- [Dot Blot](#)
- [Immunohistochemistry](#)
- [Immunofluorescence](#)
- [Immunoprecipitation](#)
- [Flow Cytometry](#)
- [Cell Culture](#)

LYZ Antibody (C-term) - Images



AP20609C staining LYZ in human tonsil tissue sections by Immunohistochemistry (IHC-P - paraformaldehyde-fixed, paraffin-embedded sections). Tissue was fixed with formaldehyde and blocked with 3% BSA for 0.5 hour at room temperature; antigen retrieval was by heat mediation with a citrate buffer (pH6). Samples were incubated with primary antibody (1/25) for 1 hour at 37°C. A undiluted biotinylated goat polyvalent antibody was used as the secondary antibody.

LYZ Antibody (C-term) - Background

Lysozymes have primarily a bacteriolytic function; those in tissues and body fluids are associated with the monocyte-macrophage system and enhance the activity of immunoagents.

LYZ Antibody (C-term) - References

Castanon M.J., et al. Gene 66:223-234(1988).
Chung L.P., et al. Proc. Natl. Acad. Sci. U.S.A. 85:6227-6231(1988).
Yoshimura K., et al. Biochem. Biophys. Res. Commun. 150:794-801(1988).
Peters C.W.B., et al. Eur. J. Biochem. 182:507-516(1989).
Huang B., et al. Sheng Wu Hua Hsueh Tsa Chih 9:269-273(1993).