

**CRX Antibody (C-term)**  
**Purified Rabbit Polyclonal Antibody (Pab)**  
**Catalog # AP20611c****Specification**

---

**CRX Antibody (C-term) - Product Information**

|                   |   |
|-------------------|---|
| Application       | WB,E  |
| Primary Accession | <a href="#">O43186</a>                          |
| Other Accession   | <a href="#">O54751</a> , <a href="#">O9XSK0</a> |
| Reactivity        | Human   |
| Predicted         | Bovine, Mouse                                   |
| Host              | Rabbit  |
| Clonality         | Polyclonal                                      |
| Isotype           | Rabbit IgG                                      |
| Calculated MW     | 32261   |

**CRX Antibody (C-term) - Additional Information****Gene ID** 1406**Other Names**

Cone-rod homeobox protein, CRX, CORD2

**Target/Specificity**

This CRX antibody is generated from a rabbit immunized with a KLH conjugated synthetic peptide between 294-297 amino acids from the C-terminal region of human CRX.

**Dilution**

WB~~1:1000

**Format**

Purified polyclonal antibody supplied in PBS with 0.09% (W/V) sodium azide. This antibody is purified through a protein A column, followed by peptide affinity purification.

**Storage**

Maintain refrigerated at 2-8°C for up to 2 weeks. For long term storage store at -20°C in small aliquots to prevent freeze-thaw cycles.

**Precautions**

CRX Antibody (C-term) is for research use only and not for use in diagnostic or therapeutic procedures.

**CRX Antibody (C-term) - Protein Information****Name** CRX**Synonyms** CORD2

**Function** Transcription factor that binds and transactivates the sequence 5'-TAATC[CA]-3' which is found upstream of several photoreceptor-specific genes, including the opsin genes. Acts synergistically with other transcription factors, such as NRL, RORB and RAX, to regulate photoreceptor cell-specific gene transcription. Essential for the maintenance of mammalian photoreceptors.

**Cellular Location**

Nucleus {ECO:0000255|PROSITE-ProRule:PRU00108}.

**Tissue Location**

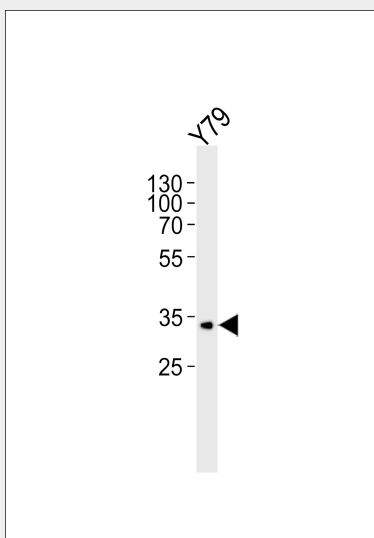
Retina.

### CRX Antibody (C-term) - Protocols

Provided below are standard protocols that you may find useful for product applications.

- [Western Blot](#)
- [Blocking Peptides](#)
- [Dot Blot](#)
- [Immunohistochemistry](#)
- [Immunofluorescence](#)
- [Immunoprecipitation](#)
- [Flow Cytometry](#)
- [Cell Culture](#)

### CRX Antibody (C-term) - Images



Western blot analysis of lysate from Y79 cell line, using CRX Antibody (C-term)(Cat. #AP20611c). AP20611c was diluted at 1:1000. A goat anti-rabbit IgG H&L(HRP) at 1:5000 dilution was used as the secondary antibody. Lysate at 35ug.

### CRX Antibody (C-term) - Background

Binds and transactivates the sequence 5'-TAATC[CA]-3' which is found upstream of several photoreceptor-specific genes, including the opsin genes. Acts synergistically with other transcription factors, e.g. NRL and RX, to regulate photoreceptor cell-specific gene transcription. Essential for the maintenance of mammalian photoreceptors.

**CRX Antibody (C-term) - References**

Freund C.L.,et al.Cell 91:543-553(1997).  
Kalnine N.,et al.Submitted (MAY-2003) to the EMBL/GenBank/DDBJ databases.  
Grimwood J.,et al.Nature 428:529-535(2004).  
Roni V.,et al.BMC Genomics 8:42-42(2007).  
Kimura A.,et al.J. Biol. Chem. 275:1152-1160(2000).