

BLVRB Antibody (C-term)
Purified Rabbit Polyclonal Antibody (Pab)
Catalog # AP20628c**Specification**

BLVRB Antibody (C-term) - Product Information

Application	WB,E
Primary Accession	P30043
Other Accession	O923D2 , P52556
Reactivity	Human, Mouse
Predicted	Bovine
Host	Rabbit
Clonality	Polyclonal
Isotype	Rabbit IgG

BLVRB Antibody (C-term) - Additional Information**Gene ID** 645**Other Names**

Flavin reductase (NADPH), FR, Biliverdin reductase B, BVR-B, Biliverdin-IX beta-reductase, Green heme-binding protein, GHBP, NADPH-dependent diaphorase, NADPH-flavin reductase, FLR, BLVRB, FLR

Target/Specificity

This BLVRB antibody is generated from a rabbit immunized with a KLH conjugated synthetic peptide between 161-175 amino acids from the C-terminal region of human BLVRB.

Dilution

WB~~1:2000

Format

Purified polyclonal antibody supplied in PBS with 0.09% (W/V) sodium azide. This antibody is purified through a protein A column, followed by peptide affinity purification.

Storage

Maintain refrigerated at 2-8°C for up to 2 weeks. For long term storage store at -20°C in small aliquots to prevent freeze-thaw cycles.

Precautions

BLVRB Antibody (C-term) is for research use only and not for use in diagnostic or therapeutic procedures.

BLVRB Antibody (C-term) - Protein Information**Name** BLVRB**Synonyms** FLR

Function Broad specificity oxidoreductase that catalyzes the NADPH- dependent reduction of a variety of flavins, such as riboflavin, FAD or FMN, biliverdins, methemoglobin and PQQ (pyrroloquinoline quinone). Contributes to heme catabolism and metabolizes linear tetrapyrroles. Can also reduce the complexed Fe(3+) iron to Fe(2+) in the presence of FMN and NADPH. In the liver, converts biliverdin to bilirubin.

Cellular Location

Cytoplasm.

Tissue Location

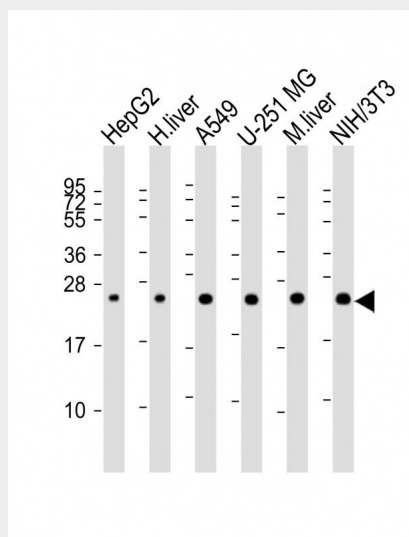
Predominantly expressed in liver and erythrocytes. At lower levels in heart, lung, adrenal gland and cerebrum

BLVRB Antibody (C-term) - Protocols

Provided below are standard protocols that you may find useful for product applications.

- [Western Blot](#)
- [Blocking Peptides](#)
- [Dot Blot](#)
- [Immunohistochemistry](#)
- [Immunofluorescence](#)
- [Immunoprecipitation](#)
- [Flow Cytometry](#)
- [Cell Culture](#)

BLVRB Antibody (C-term) - Images



All lanes : Anti-BLVRB Antibody (C-term) at 1:2000 dilution Lane 1: HepG2 whole cell lysate Lane 2: human liver lysate Lane 3: A549 whole cell lysate Lane 4: U-251 MG whole cell lysate Lane 5: mouse liver lysate Lane 6: NIH/3T3 whole cell lysate Lysates/proteins at 20 µg per lane. Secondary Goat Anti-Rabbit IgG, (H+L), Peroxidase conjugated at 1/10000 dilution. Predicted band size : 22 kDa Blocking/Dilution buffer: 5% NFDm/TBST.

BLVRB Antibody (C-term) - Background

Broad specificity oxidoreductase that catalyzes the NADPH-dependent reduction of a variety of

flavins, such as riboflavin, FAD or FMN, biliverdins, methemoglobin and PQQ (pyrroloquinoline quinone). Contributes to heme catabolism and metabolizes linear tetrapyrroles. Can also reduce the complexed Fe(3+) iron to Fe(2+) in the presence of FMN and NADPH. In the liver, converts biliverdin to bilirubin.

BLVRB Antibody (C-term) - References

Chikuba K., et al. Biochem. Biophys. Res. Commun. 198:1170-1176(1994).
Komuro A., et al. Biol. Pharm. Bull. 19:796-804(1996).
Ota T., et al. Nat. Genet. 36:40-45(2004).
Grimwood J., et al. Nature 428:529-535(2004).
Mural R.J., et al. Submitted (JUL-2005) to the EMBL/GenBank/DDBJ databases.