

**IL27RA Antibody (C-term)**  
**Purified Rabbit Polyclonal Antibody (Pab)**  
**Catalog # AP20662c****Specification**

---

**IL27RA Antibody (C-term) - Product Information**

Application	WB,E
Primary Accession	<a href="#">Q6UWB1</a>
Reactivity	Human
Host	Rabbit
Clonality	Polyclonal
Isotype	Rabbit IgG
Calculated MW	69474

**IL27RA Antibody (C-term) - Additional Information****Gene ID** 9466**Other Names**

Interleukin-27 receptor subunit alpha, IL-27 receptor subunit alpha, IL-27R subunit alpha, IL-27R-alpha, IL-27RA, Cytokine receptor WSX-1, Cytokine receptor-like 1, Type I T-cell cytokine receptor, TCCR, ZcytoR1, IL27RA, CRL1, TCCR, WSX1

**Target/Specificity**

This IL27RA antibody is generated from a rabbit immunized with a KLH conjugated synthetic peptide between 569-602 amino acids from the C-terminal region of human IL27RA.

**Dilution**

WB~~1:1000

**Format**

Purified polyclonal antibody supplied in PBS with 0.09% (W/V) sodium azide. This antibody is purified through a protein A column, followed by peptide affinity purification.

**Storage**

Maintain refrigerated at 2-8°C for up to 2 weeks. For long term storage store at -20°C in small aliquots to prevent freeze-thaw cycles.

**Precautions**

IL27RA Antibody (C-term) is for research use only and not for use in diagnostic or therapeutic procedures.

**IL27RA Antibody (C-term) - Protein Information****Name** IL27RA**Synonyms** CRL1, TCCR, WSX1

**Function** Receptor for IL27. Requires IL6ST/GP130 to mediate signal transduction in response to IL27. This signaling system acts through STAT3 and STAT1. Acts as a receptor for the neuroprotective peptide humanin as part of a complex with IL6ST/GP130 and CNTFR (PubMed:[19386761](#)). Involved in the regulation of Th1-type immune responses. Also appears to be involved in innate defense mechanisms.

#### Cellular Location

Membrane; Single-pass type I membrane protein.

#### Tissue Location

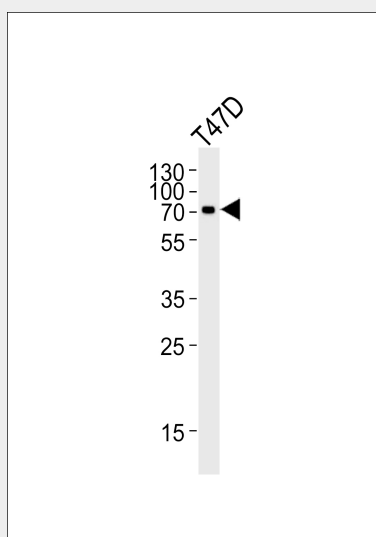
Highly expressed in lymphoid tissues such as spleen, lymph nodes and peripheral blood leukocytes. Weakly expressed in other tissues examined including heart, brain, fetal and adult lung, liver, skeletal muscle, kidney, pancreas, prostate, testis, ovary, small intestine, kidney and colon. In the lymphoid system, higher level expression in CD4+ T-cell subsets than in CD8+ T-cell subsets. Also weaker expression in CD19+ B-cells and monocytes

### IL27RA Antibody (C-term) - Protocols

Provided below are standard protocols that you may find useful for product applications.

- [Western Blot](#)
- [Blocking Peptides](#)
- [Dot Blot](#)
- [Immunohistochemistry](#)
- [Immunofluorescence](#)
- [Immunoprecipitation](#)
- [Flow Cytometry](#)
- [Cell Culture](#)

### IL27RA Antibody (C-term) - Images



Western blot analysis of lysate from T47D cell line, using IL27RA Antibody (C-term)(Cat. #AP20662c). AP20662c was diluted at 1:1000. A goat anti-rabbit IgG H&L(HRP) at 1:5000 dilution was used as the secondary antibody. Lysate at 35ug.

### IL27RA Antibody (C-term) - Background

Receptor for IL27. Requires IL6ST/gp130 to mediate signal transduction in response to IL27. This signaling system acts through STAT3 and STAT1. Involved in the regulation of Th1- type immune responses. Also appears to be involved in innate defense mechanisms.

#### **IL27RA Antibody (C-term) - References**

Sprecher C.A.,et al.Biochem. Biophys. Res. Commun. 246:82-90(1998).  
Zhang W.,et al.Submitted (NOV-1998) to the EMBL/GenBank/DDBJ databases.  
Chen Q.,et al.Nature 407:916-920(2000).  
Livingston R.J.,et al.Submitted (OCT-2006) to the EMBL/GenBank/DDBJ databases.  
Clark H.F.,et al.Genome Res. 13:2265-2270(2003).