

ZNF830 Antibody (Center)
Purified Rabbit Polyclonal Antibody (Pab)
Catalog # AP20677c**Specification**

ZNF830 Antibody (Center) - Product Information

Application	WB,E
Primary Accession	Q96NB3
Reactivity	Human
Host	Rabbit
Clonality	Polyclonal
Isotype	Rabbit IgG
Calculated MW	41999

ZNF830 Antibody (Center) - Additional Information**Gene ID** 91603**Other Names**

Zinc finger protein 830, Coiled-coil domain-containing protein 16, ZNF830, CCDC16

Target/Specificity

This ZNF830 antibody is generated from a rabbit immunized with a KLH conjugated synthetic peptide between 173-207 amino acids from the Central region of human ZNF830.

Dilution

WB~~1:1000

Format

Purified polyclonal antibody supplied in PBS with 0.09% (W/V) sodium azide. This antibody is purified through a protein A column, followed by peptide affinity purification.

Storage

Maintain refrigerated at 2-8°C for up to 2 weeks. For long term storage store at -20°C in small aliquots to prevent freeze-thaw cycles.

Precautions

ZNF830 Antibody (Center) is for research use only and not for use in diagnostic or therapeutic procedures.

ZNF830 Antibody (Center) - Protein Information**Name** ZNF830 ([HGNC:28291](#))

Function May play a role in pre-mRNA splicing as component of the spliceosome (PubMed:[25599396](#)). Acts as an important regulator of the cell cycle that participates in the maintenance of genome integrity. During cell cycle progression in embryonic fibroblast, prevents replication fork collapse, double-strand break formation and cell cycle checkpoint activation.

Controls mitotic cell cycle progression and cell survival in rapidly proliferating intestinal epithelium and embryonic stem cells. During the embryo preimplantation, controls different aspects of M phase. During early oocyte growth, plays a role in oocyte survival by preventing chromosomal breaks formation, activation of TP63 and reduction of transcription (By similarity).

Cellular Location

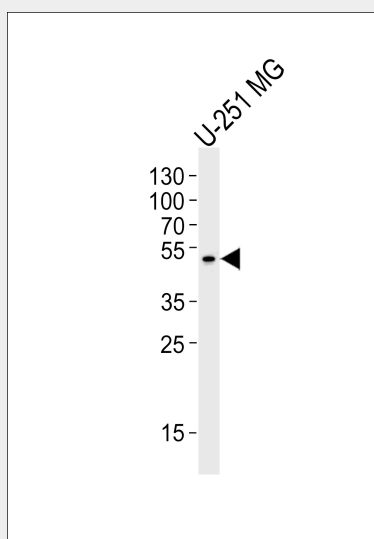
Nucleus. Chromosome {ECO:0000250|UniProtKB:Q8R1N0}. Nucleus speckle {ECO:0000250|UniProtKB:Q8R1N0}. Note=Excluded from nucleolus {ECO:0000250|UniProtKB:Q8R1N0}

ZNF830 Antibody (Center) - Protocols

Provided below are standard protocols that you may find useful for product applications.

- [Western Blot](#)
- [Blocking Peptides](#)
- [Dot Blot](#)
- [Immunohistochemistry](#)
- [Immunofluorescence](#)
- [Immunoprecipitation](#)
- [Flow Cytometry](#)
- [Cell Culture](#)

ZNF830 Antibody (Center) - Images



Western blot analysis of lysate from U-251 MG cell line, using ZNF830 Antibody (Center)(Cat. #AP20677c). AP20677c was diluted at 1:1000. A goat anti-rabbit IgG H&L(HRP) at 1:5000 dilution was used as the secondary antibody. Lysate at 35ug.

ZNF830 Antibody (Center) - Background

May act as a regulator of the cell cycle in embryos by participating in control of M phase (By similarity).

ZNF830 Antibody (Center) - References

Ota T.,et al.Nat. Genet. 36:40-45(2004).

Zody M.C.,et al.Nature 440:1045-1049(2006).
Olsen J.V.,et al.Cell 127:635-648(2006).
Matsuoka S.,et al.Science 316:1160-1166(2007).
Dephoure N.,et al.Proc. Natl. Acad. Sci. U.S.A. 105:10762-10767(2008).