

TSPY2 Antibody (Center)
Purified Rabbit Polyclonal Antibody (Pab)
Catalog # AP20718c**Specification**

TSPY2 Antibody (Center) - Product Information

Application	WB,E
Primary Accession	A6NKD2
Other Accession	P0CW01 , P0CW00 , P0CV99 , P0CV98 , Q01534
Reactivity	Human
Host	Rabbit
Clonality	Polyclonal
Isotype	Rabbit IgG
Calculated MW	35100
Antigen Region	86-120

TSPY2 Antibody (Center) - Additional Information**Gene ID** 64591**Other Names**

Testis-specific Y-encoded protein 2, Testis-specific Y-encoded protein Q1, TSPY2, TSPYQ1

Target/Specificity

This TSPY2 antibody is generated from a rabbit immunized with a KLH conjugated synthetic peptide between 86-120 amino acids from the Central region of human TSPY2.

Dilution

WB~~1:1000

Format

Purified polyclonal antibody supplied in PBS with 0.09% (W/V) sodium azide. This antibody is purified through a protein A column, followed by peptide affinity purification.

Storage

Maintain refrigerated at 2-8°C for up to 2 weeks. For long term storage store at -20°C in small aliquots to prevent freeze-thaw cycles.

Precautions

TSPY2 Antibody (Center) is for research use only and not for use in diagnostic or therapeutic procedures.

TSPY2 Antibody (Center) - Protein Information**Name** TSPY2**Synonyms** TSPYQ1

Function May be involved in sperm differentiation and proliferation.

Cellular Location

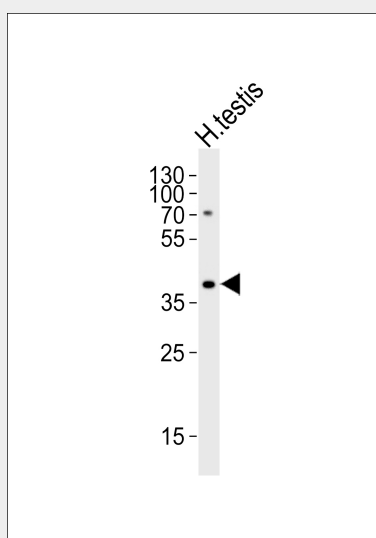
Cytoplasm {ECO:0000250|UniProtKB:Q01534}. Nucleus {ECO:0000250|UniProtKB:Q01534}

TSPY2 Antibody (Center) - Protocols

Provided below are standard protocols that you may find useful for product applications.

- [Western Blot](#)
- [Blocking Peptides](#)
- [Dot Blot](#)
- [Immunohistochemistry](#)
- [Immunofluorescence](#)
- [Immunoprecipitation](#)
- [Flow Cytometry](#)
- [Cell Culture](#)

TSPY2 Antibody (Center) - Images



Western blot analysis of lysate from human testis tissue lysate, using TSPY2 Antibody (Center)(Cat. #AP20718c). AP20718c was diluted at 1:1000. A goat anti-rabbit IgG H&L(HRP) at 1:5000 dilution was used as the secondary antibody. Lysate at 35ug.

TSPY2 Antibody (Center) - Background

Unknown. May be involved in sperm differentiation and proliferation (By similarity).

TSPY2 Antibody (Center) - References

Skaletsky H.,et al.Nature 423:825-837(2003).