

CPLX2 Antibody (Center)
Purified Rabbit Polyclonal Antibody (Pab)
Catalog # AP20735c**Specification**

CPLX2 Antibody (Center) - Product Information

Application	WB,E
Primary Accession	Q6PUV4
Other Accession	P84087 , P84086 , P84088
Reactivity	Mouse
Predicted	Bovine, Rat
Host	Rabbit
Clonality	Polyclonal
Isotype	Rabbit IgG
Calculated MW	15394

CPLX2 Antibody (Center) - Additional Information**Gene ID** 10814**Other Names**

Complexin-2, Complexin II, CPX II, Synaphin-1, CPLX2

Target/Specificity

This CPLX2 antibody is generated from a rabbit immunized with a KLH conjugated synthetic peptide between 51-83 amino acids from the Central region of human CPLX2.

Dilution

WB~~1:1000

Format

Purified polyclonal antibody supplied in PBS with 0.09% (W/V) sodium azide. This antibody is purified through a protein A column, followed by peptide affinity purification.

Storage

Maintain refrigerated at 2-8°C for up to 2 weeks. For long term storage store at -20°C in small aliquots to prevent freeze-thaw cycles.

Precautions

CPLX2 Antibody (Center) is for research use only and not for use in diagnostic or therapeutic procedures.

CPLX2 Antibody (Center) - Protein Information**Name** CPLX2

Function Negatively regulates the formation of synaptic vesicle clustering at active zone to the presynaptic membrane in postmitotic neurons. Positively regulates a late step in exocytosis of

various cytoplasmic vesicles, such as synaptic vesicles and other secretory vesicles. Also involved in mast cell exocytosis (By similarity).

Cellular Location

Cytoplasm, cytosol {ECO:0000250|UniProtKB:P84087}. Presynapse {ECO:0000250|UniProtKB:P84087}. Nucleus {ECO:0000250|UniProtKB:P84087} Perikaryon {ECO:0000250|UniProtKB:P84087}. Note=Translocated from the perikaryon to the presynaptic terminals during maturation of neuronal cells. In mast cells, cytosol and nucleus. Becomes enriched near plasma membrane following stimulation. {ECO:0000250|UniProtKB:P84087}

Tissue Location

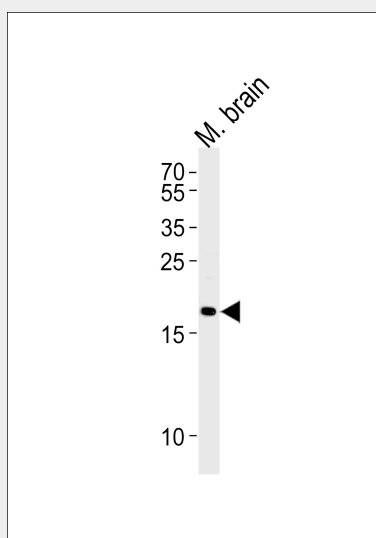
Nervous system. In hippocampus and cerebellum, expressed mainly by excitatory neurons. Down-regulated in brain cortex from patients suffering from Huntington disease, bipolar disorder or major depression. Down-regulated in cerebellum from patients with schizophrenia.

CPLX2 Antibody (Center) - Protocols

Provided below are standard protocols that you may find useful for product applications.

- [Western Blot](#)
- [Blocking Peptides](#)
- [Dot Blot](#)
- [Immunohistochemistry](#)
- [Immunofluorescence](#)
- [Immunoprecipitation](#)
- [Flow Cytometry](#)
- [Cell Culture](#)

CPLX2 Antibody (Center) - Images



Western blot analysis of lysate from mouse brain tissue, using CPLX2 Antibody (Center)(Cat. #AP20735c). AP20735c was diluted at 1:1000. A goat anti-rabbit IgG H&L(HRP) at 1:5000 dilution was used as the secondary antibody. Lysate at 35ug.

CPLX2 Antibody (Center) - Background

Negatively regulates the formation of synaptic vesicle clustering at active zone to the presynaptic

membrane in postmitotic neurons. Positively regulates a late step in synaptic vesicle exocytosis. Also involved in mast cell exocytosis (By similarity).

CPLX2 Antibody (Center) - References

McMahon H.T.,et al.Cell 83:111-119(1995).
Ota T.,et al.Nat. Genet. 36:40-45(2004).
Raevs kaya N.M.,et al.Gene 359:127-137(2005).
Harrison P.J.,et al.Lancet 352:1669-1673(1998).
Eastwood S.L.,et al.Brain Res. Bull. 55:569-578(2001).