

**GDF15 Antibody (C-term)**  
**Purified Rabbit Polyclonal Antibody (Pab)**  
**Catalog # AP20785c****Specification**

---

**GDF15 Antibody (C-term) - Product Information**

Application	WB,E
Primary Accession	<a href="#">Q99988</a>
Reactivity	Human
Host	Rabbit
Clonality	Polyclonal
Isotype	Rabbit IgG
Calculated MW	34140

**GDF15 Antibody (C-term) - Additional Information****Gene ID** 9518**Other Names**

Growth/differentiation factor 15, GDF-15, Macrophage inhibitory cytokine 1, MIC-1, NSAID-activated gene 1 protein, NAG-1, NSAID-regulated gene 1 protein, NRG-1, Placental TGF-beta, Placental bone morphogenetic protein, Prostate differentiation factor, GDF15, MIC1, PDF, PLAB, PTGFB

**Target/Specificity**

This GDF15 antibody is generated from a rabbit immunized with a KLH conjugated synthetic peptide between 258-293 amino acids from the C-terminal region of human GDF15.

**Dilution**

WB~~1:1000

**Format**

Purified polyclonal antibody supplied in PBS with 0.09% (W/V) sodium azide. This antibody is purified through a protein A column, followed by peptide affinity purification.

**Storage**

Maintain refrigerated at 2-8°C for up to 2 weeks. For long term storage store at -20°C in small aliquots to prevent freeze-thaw cycles.

**Precautions**

GDF15 Antibody (C-term) is for research use only and not for use in diagnostic or therapeutic procedures.

**GDF15 Antibody (C-term) - Protein Information****Name** GDF15 ([HGNC:30142](#))**Function** Regulates food intake, energy expenditure and body weight in response to metabolic

and toxin-induced stresses (PubMed:[28953886](#), PubMed:[28846097](#), PubMed:[28846098](#), PubMed:[28846099](#), PubMed:[23468844](#), PubMed:[29046435](#)). Binds to its receptor, GFRAL, and activates GFRAL- expressing neurons localized in the area postrema and nucleus tractus solitarius of the brainstem (PubMed:[28953886](#), PubMed:[28846097](#), PubMed:[28846098](#), PubMed:[28846099](#)). It then triggers the activation of neurons localized within the parabrachial nucleus and central amygdala, which constitutes part of the 'emergency circuit' that shapes feeding responses to stressful conditions (PubMed:[28953886](#)). On hepatocytes, inhibits growth hormone signaling (By similarity).

#### Cellular Location

Secreted

#### Tissue Location

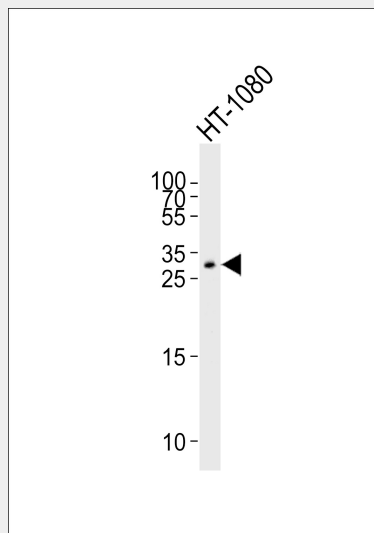
Highly expressed in placenta, with lower levels in prostate and colon and some expression in kidney (PubMed:9348093) Detected in plasma (at protein level) (PubMed:28572090, PubMed:29046435).

### GDF15 Antibody (C-term) - Protocols

Provided below are standard protocols that you may find useful for product applications.

- [Western Blot](#)
- [Blocking Peptides](#)
- [Dot Blot](#)
- [Immunohistochemistry](#)
- [Immunofluorescence](#)
- [Immunoprecipitation](#)
- [Flow Cytometry](#)
- [Cell Culture](#)

### GDF15 Antibody (C-term) - Images



Western blot analysis of lysate from HT-1080 cell line, using GDF15 Antibody (C-term)(Cat. #AP20785c). AP20785c was diluted at 1:1000. A goat anti-rabbit IgG H&L(HRP) at 1:5000 dilution was used as the secondary antibody. Lysate at 35ug.

### GDF15 Antibody (C-term) - References

Hromas R.,et al.Biochim. Biophys. Acta 1354:40-44(1997).  
Yokoyama-Kobayashi M.,et al.J. Biochem. 122:622-626(1997).  
Bootcov M.R.,et al.Proc. Natl. Acad. Sci. U.S.A. 94:11514-11519(1997).  
Paralkar V.M.,et al.J. Biol. Chem. 273:13760-13767(1998).  
Kalnine N.,et al.Submitted (MAY-2003) to the EMBL/GenBank/DDBJ databases.