

**PET112 Antibody (N-term)**  
**Purified Rabbit Polyclonal Antibody (Pab)**  
**Catalog # AP20796a****Specification**

---

**PET112 Antibody (N-term) - Product Information**

Application	WB,E
Primary Accession	<a href="#">075879</a>
Reactivity	Human
Host	Rabbit
Clonality	Polyclonal
Isotype	Rabbit IgG
Calculated MW	61864

**PET112 Antibody (N-term) - Additional Information****Gene ID** 5188**Other Names**

Glutamyl-tRNA(Gln) amidotransferase subunit B, mitochondrial  
{ECO:0000255|HAMAP-Rule:MF\_03147}, Glu-AdT subunit B  
{ECO:0000255|HAMAP-Rule:MF\_03147}, 635- {ECO:0000255|HAMAP-Rule:MF\_03147},  
Cytochrome c oxidase assembly factor PET112 homolog, GATB

**Target/Specificity**

This PET112 antibody is generated from a rabbit immunized with a KLH conjugated synthetic peptide between 25-60 amino acids from the N-terminal region of human PET112.

**Dilution**

WB~~1:1000

**Format**

Purified polyclonal antibody supplied in PBS with 0.09% (W/V) sodium azide. This antibody is purified through a protein A column, followed by peptide affinity purification.

**Storage**

Maintain refrigerated at 2-8°C for up to 2 weeks. For long term storage store at -20°C in small aliquots to prevent freeze-thaw cycles.

**Precautions**

PET112 Antibody (N-term) is for research use only and not for use in diagnostic or therapeutic procedures.

**PET112 Antibody (N-term) - Protein Information****Name** GATB {ECO:0000255|HAMAP-Rule:MF\_03147, ECO:0000312|HGNC:HGNC:8849}**Function** Allows the formation of correctly charged Gln-tRNA(Gln) through the transamidation of

misacylated Glu-tRNA(Gln) in the mitochondria. The reaction takes place in the presence of glutamine and ATP through an activated gamma-phospho-Glu-tRNA(Gln).

**Cellular Location**

Mitochondrion {ECO:0000255|HAMAP-Rule:MF\_03147, ECO:0000269|PubMed:9878253}

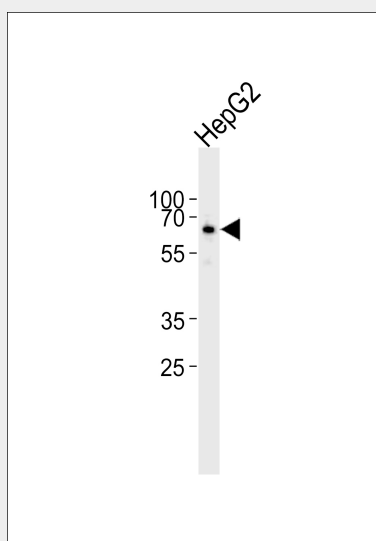
**Tissue Location**

Predominantly expressed in tissues characterized by high rates of oxidative phosphorylation (OxPhos), including muscle and heart.

**PET112 Antibody (N-term) - Protocols**

Provided below are standard protocols that you may find useful for product applications.

- [Western Blot](#)
- [Blocking Peptides](#)
- [Dot Blot](#)
- [Immunohistochemistry](#)
- [Immunofluorescence](#)
- [Immunoprecipitation](#)
- [Flow Cytometry](#)
- [Cell Culture](#)

**PET112 Antibody (N-term) - Images**

Western blot analysis of lysate from HepG2 cell line, using PET112 Antibody (N-term)(Cat. #AP20796a). AP20796a was diluted at 1:1000. A goat anti-rabbit IgG H&L(HRP) at 1:5000 dilution was used as the secondary antibody. Lysate at 35ug.

**PET112 Antibody (N-term) - Background**

Allows the formation of correctly charged Gln-tRNA(Gln) through the transamidation of misacylated Glu-tRNA(Gln) in the mitochondria. The reaction takes place in the presence of glutamine and ATP through an activated gamma-phospho-Glu- tRNA(Gln).

**PET112 Antibody (N-term) - References**

Petruzzella V.,et al.Genomics 54:494-504(1998).  
Zhang Q.-H.,et al.Genome Res. 10:1546-1560(2000).  
Ota T.,et al.Nat. Genet. 36:40-45(2004).  
Hillier L.W.,et al.Nature 434:724-731(2005).  
Mural R.J.,et al.Submitted (SEP-2005) to the EMBL/GenBank/DDBJ databases.