

**MINOS1 Antibody (N-term)**  
**Purified Rabbit Polyclonal Antibody (Pab)**  
**Catalog # AP20802a****Specification**

---

**MINOS1 Antibody (N-term) - Product Information**

Application	WB,E
Primary Accession	<a href="#">Q5TGZ0</a>
Other Accession	<a href="#">Q7TNS2</a>
Reactivity	Mouse
Host	Rabbit
Clonality	Polyclonal
Isotype	Rabbit IgG
Calculated MW	8808
Antigen Region	1-33

**MINOS1 Antibody (N-term) - Additional Information****Gene ID** 440574**Other Names**

MICOS complex subunit MIC10, Mitochondrial inner membrane organizing system protein 1, MINOS1, C1orf151, MIC10

**Target/Specificity**

This MINOS1 antibody is generated from a rabbit immunized with a KLH conjugated synthetic peptide between 1-33 amino acids from the N-terminal region of human MINOS1.

**Dilution**

WB~~1:1000

**Format**

Purified polyclonal antibody supplied in PBS with 0.09% (W/V) sodium azide. This antibody is purified through a protein A column, followed by peptide affinity purification.

**Storage**

Maintain refrigerated at 2-8°C for up to 2 weeks. For long term storage store at -20°C in small aliquots to prevent freeze-thaw cycles.

**Precautions**

MINOS1 Antibody (N-term) is for research use only and not for use in diagnostic or therapeutic procedures.

**MINOS1 Antibody (N-term) - Protein Information****Name** MICOS10 ([HGNC:32068](#))**Function** Component of the MICOS complex, a large protein complex of the mitochondrial inner

membrane that plays crucial roles in the maintenance of crista junctions, inner membrane architecture, and formation of contact sites to the outer membrane.

#### Cellular Location

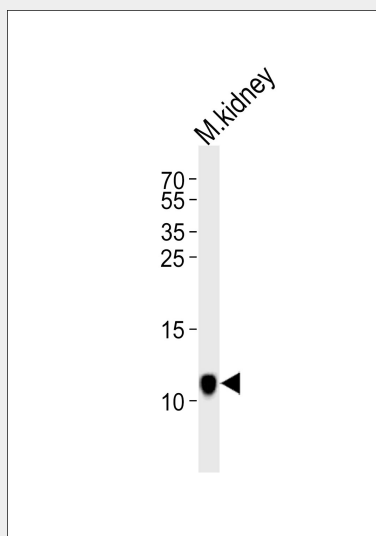
Mitochondrion inner membrane; Single-pass membrane protein. Note=The C-terminus is located in the intermembrane space (By similarity), while the location of the N- terminus has not been determined yet. As some programs predict the presence of 2 closely apposed membrane domains, it has been proposed that the protein may cross the membrane twice and that both termini may face the intermembrane space (PubMed:22114354). {ECO:0000250, ECO:0000269|PubMed:22114354}

#### MINOS1 Antibody (N-term) - Protocols

Provided below are standard protocols that you may find useful for product applications.

- [Western Blot](#)
- [Blocking Peptides](#)
- [Dot Blot](#)
- [Immunohistochemistry](#)
- [Immunofluorescence](#)
- [Immunoprecipitation](#)
- [Flow Cytometry](#)
- [Cell Culture](#)

#### MINOS1 Antibody (N-term) - Images



Western blot analysis of lysate from mouse kidney tissue lysate, using MINOS1 Antibody (N-term)(Cat. #AP20802a). AP20802a was diluted at 1:1000. A goat anti-rabbit IgG H&L(HRP) at 1:10000 dilution was used as the secondary antibody. Lysate at 35ug.

#### MINOS1 Antibody (N-term) - Background

May play a role in mitochondrial architecture (By similarity).

#### MINOS1 Antibody (N-term) - References

Gregory S.G.,et al.Nature 441:315-321(2006).

Alkhaja A.K.,et al.Mol. Biol. Cell 23:247-257(2012).

Van Damme P.,et al.Proc. Natl. Acad. Sci. U.S.A. 109:12449-12454(2012).