

**CHRNA3 Antibody (Center)**  
**Purified Rabbit Polyclonal Antibody (Pab)**  
**Catalog # AP20832c****Specification**

---

**CHRNA3 Antibody (Center) - Product Information**

Application	WB,E
Primary Accession	<a href="#">Q05901</a>
Other Accession	<a href="#">P12391</a> , <a href="#">Q8BMN3</a>
Reactivity	Hamster
Predicted	Mouse, Rat
Host	Rabbit
Clonality	Polyclonal
Isotype	Rabbit IgG
Calculated MW	52729
Antigen Region	187-200

**CHRNA3 Antibody (Center) - Additional Information****Gene ID** 1142**Other Names**

Neuronal acetylcholine receptor subunit beta-3, CHRNA3

**Target/Specificity**

This CHRNA3 antibody is generated from a rabbit immunized with a KLH conjugated synthetic peptide between 187-200 amino acids from the Central region of human CHRNA3.

**Dilution**

WB~~1:1000

**Format**

Purified polyclonal antibody supplied in PBS with 0.09% (W/V) sodium azide. This antibody is purified through a protein A column, followed by peptide affinity purification.

**Storage**

Maintain refrigerated at 2-8°C for up to 2 weeks. For long term storage store at -20°C in small aliquots to prevent freeze-thaw cycles.

**Precautions**

CHRNA3 Antibody (Center) is for research use only and not for use in diagnostic or therapeutic procedures.

**CHRNA3 Antibody (Center) - Protein Information****Name** CHRNA3**Function** After binding acetylcholine, the AChR responds by an extensive change in conformation

that affects all subunits and leads to opening of an ion-conducting channel across the plasma membrane.

#### **Cellular Location**

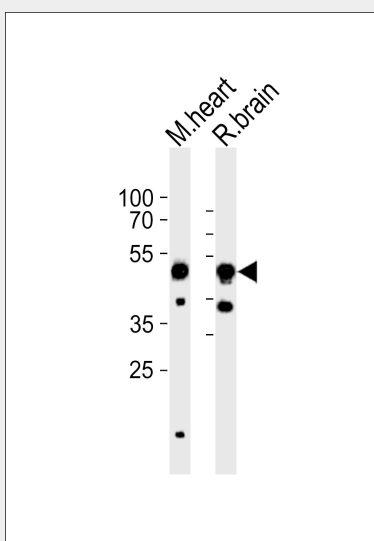
Postsynaptic cell membrane; Multi-pass membrane protein. Cell membrane; Multi-pass membrane protein

#### **CHRNA3 Antibody (Center) - Protocols**

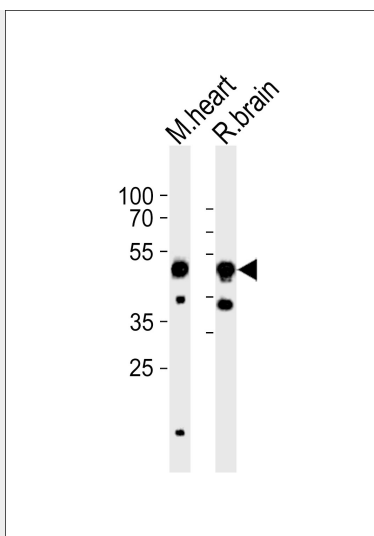
Provided below are standard protocols that you may find useful for product applications.

- [Western Blot](#)
- [Blocking Peptides](#)
- [Dot Blot](#)
- [Immunohistochemistry](#)
- [Immunofluorescence](#)
- [Immunoprecipitation](#)
- [Flow Cytometry](#)
- [Cell Culture](#)

#### **CHRNA3 Antibody (Center) - Images**



Western blot analysis of lysates from mouse heart, rat brain tissue (from left to right), using CHRNA3 Antibody (Center)(Cat. #AP20832c). AP20832c was diluted at 1:1000 at each lane. A goat anti-rabbit IgG H&L(HRP) at 1:10000 dilution was used as the secondary antibody. Lysates at 35ug per lane.



Western blot analysis of lysates from mouse heart, rat brain tissue lysate (from left to right), using CHRNA3 Antibody (Center)(Cat. #AP20832c). AP20832c was diluted at 1:1000 at each lane. A goat anti-rabbit IgG H&L(HRP) at 1:10000 dilution was used as the secondary antibody. Lysates at 35ug per lane.

#### **CHRNA3 Antibody (Center) - Background**

After binding acetylcholine, the AChR responds by an extensive change in conformation that affects all subunits and leads to opening of an ion-conducting channel across the plasma membrane.

#### **CHRNA3 Antibody (Center) - References**

Elliott K.J.,et al.J. Mol. Neurosci. 7:217-228(1996).  
Groot Kormelink P.J.,et al.FEBS Lett. 400:309-314(1997).  
Keddache M.,et al.Submitted (APR-1999) to the EMBL/GenBank/DDBJ databases.  
Willoughby J.J.,et al.Neurosci. Lett. 155:136-139(1993).