

**ZIM2 Antibody (N-term)**  
**Purified Rabbit Polyclonal Antibody (Pab)**  
**Catalog # AP20833a****Specification**

---

**ZIM2 Antibody (N-term) - Product Information**

Application	WB,E
Primary Accession	<a href="#">O9NZV7</a>
Other Accession	<a href="#">O9GZU2</a>
Reactivity	Human
Host	Rabbit
Clonality	Polyclonal
Isotype	Rabbit IgG
Calculated MW	61164

**ZIM2 Antibody (N-term) - Additional Information****Gene ID** 23619**Other Names**

Zinc finger imprinted 2, Zinc finger protein 656, ZIM2, ZNF656

**Target/Specificity**

This ZIM2 antibody is generated from a rabbit immunized with a KLH conjugated synthetic peptide between 39-73 amino acids from the N-terminal region of human ZIM2.

**Dilution**

WB~~1:1000

**Format**

Purified polyclonal antibody supplied in PBS with 0.09% (W/V) sodium azide. This antibody is purified through a protein A column, followed by peptide affinity purification.

**Storage**

Maintain refrigerated at 2-8°C for up to 2 weeks. For long term storage store at -20°C in small aliquots to prevent freeze-thaw cycles.

**Precautions**

ZIM2 Antibody (N-term) is for research use only and not for use in diagnostic or therapeutic procedures.

**ZIM2 Antibody (N-term) - Protein Information****Name** ZIM2**Synonyms** ZNF656**Function** May be involved in transcriptional regulation.

**Cellular Location**

Nucleus.

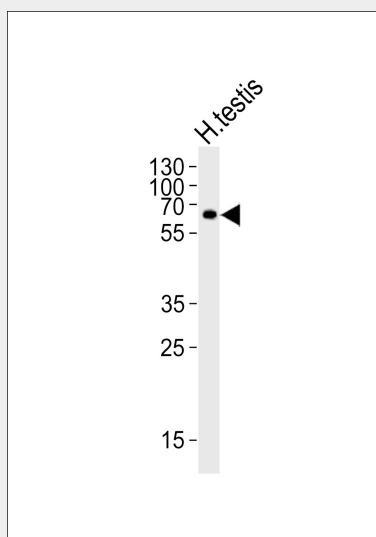
**Tissue Location**

Highest levels of expression in adult testis; modest levels in fetal kidney and brain

**ZIM2 Antibody (N-term) - Protocols**

Provided below are standard protocols that you may find useful for product applications.

- [Western Blot](#)
- [Blocking Peptides](#)
- [Dot Blot](#)
- [Immunohistochemistry](#)
- [Immunofluorescence](#)
- [Immunoprecipitation](#)
- [Flow Cytometry](#)
- [Cell Culture](#)

**ZIM2 Antibody (N-term) - Images**

Western blot analysis of lysate from human testis tissue lysate, using ZIM2 Antibody (N-term)(Cat. #AP20833a). AP20833a was diluted at 1:1000. A goat anti-rabbit IgG H&L(HRP) at 1:10000 dilution was used as the secondary antibody. Lysate at 35ug.

**ZIM2 Antibody (N-term) - Background**

May be involved in transcriptional regulation.

**ZIM2 Antibody (N-term) - References**

Kim J.,et al.Genomics 64:114-118(2000).