

TEX101 Antibody (C-term)
Purified Rabbit Polyclonal Antibody (Pab)
Catalog # AP20841c

Specification

TEX101 Antibody (C-term) - Product Information

Application	WB,E
Primary Accession	Q9BY14
Reactivity	Human
Host	Rabbit
Clonality	Polyclonal
Isotype	Rabbit IgG
Calculated MW	26667

TEX101 Antibody (C-term) - Additional Information

Gene ID 83639

Other Names

Testis-expressed sequence 101 protein, Cell surface receptor NYD-SP8, Scleroderma-associated autoantigen, Spermatogenesis-related gene protein, TEX101, SGRG

Target/Specificity

This TEX101 antibody is generated from a rabbit immunized with a KLH conjugated synthetic peptide between 214-246 amino acids from the C-terminal region of human TEX101.

Dilution

WB~~1:500-1:1000

Format

Purified polyclonal antibody supplied in PBS with 0.09% (W/V) sodium azide. This antibody is purified through a protein A column, followed by peptide affinity purification.

Storage

Maintain refrigerated at 2-8°C for up to 2 weeks. For long term storage store at -20°C in small aliquots to prevent freeze-thaw cycles.

Precautions

TEX101 Antibody (C-term) is for research use only and not for use in diagnostic or therapeutic procedures.

TEX101 Antibody (C-term) - Protein Information

Name TEX101 ([HGNC:30722](#))

Synonyms SGRG

Function Plays a role in fertilization by controlling binding of sperm to zona pellucida and

migration of spermatozoa into the oviduct (By similarity). May play a role in signal transduction and promote protein tyrosine phosphorylation (By similarity).

Cellular Location

Cell membrane {ECO:0000250|UniProtKB:Q9JMI7}; Lipid-anchor, GPI-anchor {ECO:0000250|UniProtKB:Q9JMI7}. Membrane raft {ECO:0000250|UniProtKB:Q9JMI7}. Cytoplasmic vesicle, secretory vesicle, acrosome {ECO:0000250|UniProtKB:Q9JMI7}. Secreted {ECO:0000250|UniProtKB:Q9JMI7}. Cytoplasmic vesicle {ECO:0000250|UniProtKB:Q9JMI7}. Note=Located on plasma membrane of spermatocytes, round and elongated spermatids, and testicular spermatozoa. {ECO:0000250|UniProtKB:Q9JMI7}

Tissue Location

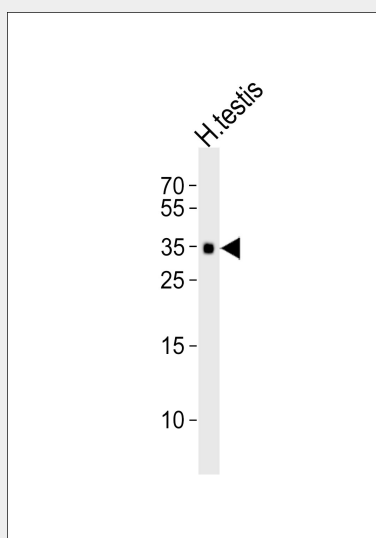
Detected in testis and spermatogonia. Not detected in spermatocytes. Detected in blood leukocytes

TEX101 Antibody (C-term) - Protocols

Provided below are standard protocols that you may find useful for product applications.

- [Western Blot](#)
- [Blocking Peptides](#)
- [Dot Blot](#)
- [Immunohistochemistry](#)
- [Immunofluorescence](#)
- [Immunoprecipitation](#)
- [Flow Cytometry](#)
- [Cell Culture](#)

TEX101 Antibody (C-term) - Images



Western blot analysis of lysate from human testis tissue lysate, using TEX101 Antibody (C-term)(Cat. #AP20841c). AP20841c was diluted at 1:1000. A goat anti-rabbit IgG H&L(HRP) at 1:10000 dilution was used as the secondary antibody. Lysate at 35ug.

TEX101 Antibody (C-term) - Background

May play a role in signal transduction and promote protein tyrosine phosphorylation (By

similarity).

TEX101 Antibody (C-term) - References

Teng X.,et al.Biochem. Biophys. Res. Commun. 342:1223-1227(2006).

Li J.M.,et al.Submitted (NOV-2000) to the EMBL/GenBank/DDBJ databases.

Yang J.,et al.Submitted (FEB-2001) to the EMBL/GenBank/DDBJ databases.

Clark H.F.,et al.Genome Res. 13:2265-2270(2003).