

Mouse Insrr Antibody (C-term)
Purified Rabbit Polyclonal Antibody (Pab)
Catalog # AP20858c**Specification**

Mouse Insrr Antibody (C-term) - Product Information

Application	WB,E
Primary Accession	Q9WTL4
Other Accession	Q64716
Reactivity	Rat
Host	Rabbit
Clonality	Polyclonal
Isotype	Rabbit IgG
Antigen Region	1265-1295

Mouse Insrr Antibody (C-term) - Additional Information**Gene ID** 23920**Other Names**

Insulin receptor-related protein, IRR, IR-related receptor, Insulin receptor-related protein alpha chain, Insulin receptor-related protein beta chain, Insrr, Irr

Target/Specificity

This Mouse Insrr antibody is generated from a rabbit immunized with a KLH conjugated synthetic peptide between 1265-1295 amino acids from the C-terminal region of Mouse Insrr.

Dilution

WB~~1:1000

Format

Purified polyclonal antibody supplied in PBS with 0.09% (W/V) sodium azide. This antibody is purified through a protein A column, followed by peptide affinity purification.

Storage

Maintain refrigerated at 2-8°C for up to 2 weeks. For long term storage store at -20°C in small aliquots to prevent freeze-thaw cycles.

Precautions

Mouse Insrr Antibody (C-term) is for research use only and not for use in diagnostic or therapeutic procedures.

Mouse Insrr Antibody (C-term) - Protein Information**Name** Insrr**Synonyms** Irr

Function Receptor with tyrosine-protein kinase activity. Functions as a pH sensing receptor which is activated by increased extracellular pH. Activates an intracellular signaling pathway that involves IRS1 and AKT1/PKB.

Cellular Location

Membrane; Single-pass type I membrane protein

Tissue Location

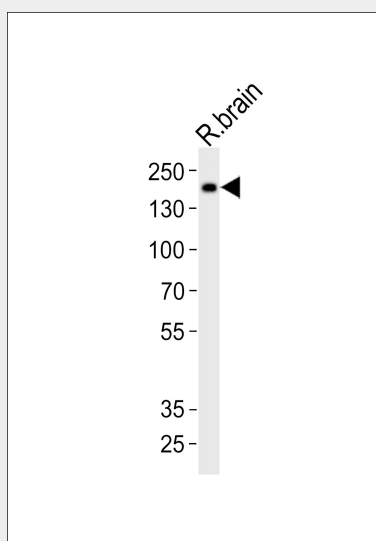
Highly expressed in the islets as well as in pancreatic beta-cells.

Mouse Insrr Antibody (C-term) - Protocols

Provided below are standard protocols that you may find useful for product applications.

- [Western Blot](#)
- [Blocking Peptides](#)
- [Dot Blot](#)
- [Immunohistochemistry](#)
- [Immunofluorescence](#)
- [Immunoprecipitation](#)
- [Flow Cytometry](#)
- [Cell Culture](#)

Mouse Insrr Antibody (C-term) - Images



Western blot analysis of lysate from rat brain tissue, using Mouse Insrr Antibody (C-term)(Cat. #AP20858c). AP20858c was diluted at 1:1000. A goat anti-rabbit IgG H&L(HRP) at 1:10000 dilution was used as the secondary antibody. Lysate at 20ug.

Mouse Insrr Antibody (C-term) - Background

Receptor with tyrosine-protein kinase activity. Functions as a pH sensing receptor which is activated by increased extracellular pH. Activates an intracellular signaling pathway that involves IRS1 and AKT1/PKB.

Mouse Insrr Antibody (C-term) - References

Hirayama I.,et al.Diabetes 48:1237-1244(1999).
Mural R.J.,et al.Submitted (JUL-2005) to the EMBL/GenBank/DDBJ databases.
Kitamura T.,et al.Mol. Cell. Biol. 21:5624-5630(2001).
Deyev I.E.,et al.Cell Metab. 13:679-689(2011).