

**LAPTM4B Antibody**  
**Purified Rabbit Polyclonal Antibody (Pab)**  
**Catalog # AP20871a****Specification**

---

**LAPTM4B Antibody - Product Information**

Application	WB,E
Primary Accession	<a href="#">Q86VI4</a>
Reactivity	Human, Rat
Host	Rabbit
Clonality	Polyclonal
Isotype	Rabbit IgG
Calculated MW	35123

**LAPTM4B Antibody - Additional Information****Gene ID** 55353**Other Names**

Lysosomal-associated transmembrane protein 4B, Lysosome-associated transmembrane protein 4-beta, LAPTM4B

**Target/Specificity**

This antibody is generated from a rabbit immunized with a KLH conjugated synthetic peptide between 195-209 amino acids from human.

**Dilution**

WB~~1:1000

**Format**

Purified polyclonal antibody supplied in PBS with 0.09% (W/V) sodium azide. This antibody is purified through a protein A column, followed by peptide affinity purification.

**Storage**

Maintain refrigerated at 2-8°C for up to 2 weeks. For long term storage store at -20°C in small aliquots to prevent freeze-thaw cycles.

**Precautions**

LAPTM4B Antibody is for research use only and not for use in diagnostic or therapeutic procedures.

**LAPTM4B Antibody - Protein Information****Name** LAPTM4B ([HGNC:13646](#))**Function** Required for optimal lysosomal function (PubMed:[21224396](#)). Blocks EGF-stimulated EGFR intraluminal sorting and degradation. Conversely by binding with the phosphatidylinositol 4,5-bisphosphate, regulates its PIP5K1C interaction, inhibits HGS ubiquitination and relieves LAPTM4B inhibition of EGFR degradation (PubMed:[25588945](#)). Recruits SLC3A2 and SLC7A5 (the

Leu transporter) to the lysosome, promoting entry of leucine and other essential amino acid (EAA) into the lysosome, stimulating activation of proton-transporting vacuolar (V)-ATPase protein pump (V-ATPase) and hence mTORC1 activation (PubMed:[25998567](#)). Plays a role as negative regulator of TGF $\beta$ 1 production in regulatory T cells (PubMed:[26126825](#)). Binds ceramide and facilitates its exit from late endosome in order to control cell death pathways (PubMed:[26280656](#)).

#### Cellular Location

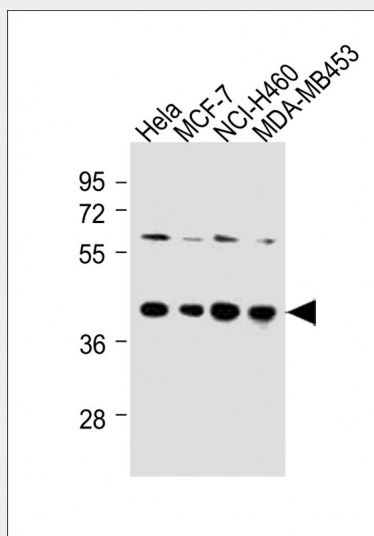
Endomembrane system; Multi-pass membrane protein. Late endosome membrane. Cell membrane. Cell projection. Lysosome membrane. Endosome membrane. Endosome, multivesicular body membrane. Endosome, multivesicular body lumen

#### LAPTM4B Antibody - Protocols

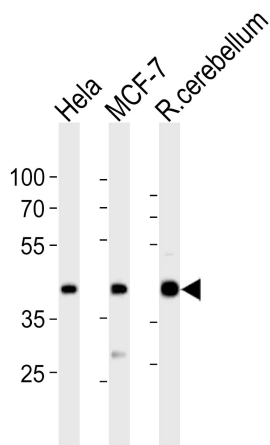
Provided below are standard protocols that you may find useful for product applications.

- [Western Blot](#)
- [Blocking Peptides](#)
- [Dot Blot](#)
- [Immunohistochemistry](#)
- [Immunofluorescence](#)
- [Immunoprecipitation](#)
- [Flow Cytometry](#)
- [Cell Culture](#)

#### LAPTM4B Antibody - Images



All lanes : Anti-LAPTM4B-4 Antibody at 1:250 dilution Lane 1: HeLa whole cell lysates Lane 2: MCF-7 whole cell lysates Lane 3: NCI-H460 whole cell lysates Lane 4: MDA-MB453 whole cell lysates Lysates/proteins at 20  $\mu$ g per lane. Secondary Goat Anti-Rabbit IgG, (H+L), Peroxidase conjugated at 1/10000 dilution Predicted band size : 41 kDa Blocking/Dilution buffer: 5% NFDM/TBST.



Western blot analysis of lysates from HeLa, MCF-7 cell line, rat cerebellum tissue lysate (from left to right), using LAPTM4B Antibody (4) (Cat. #AP20871a). AP20871a was diluted at 1:1000 at each lane. A goat anti-rabbit IgG H&L (HRP) at 1:10000 dilution was used as the secondary antibody. Lysates at 20 µg per lane.

#### LAPTM4B Antibody - References

- Shao G.-Z., et al. *Oncogene* 22:5060-5069 (2003).  
Hogue D.L., et al. Submitted (OCT-2000) to the EMBL/GenBank/DDBJ databases.  
Otsuki T., et al. *DNA Res.* 12:117-126 (2005).  
Wiemann S., et al. *Genome Res.* 11:422-435 (2001).