

**NDN Antibody (N-term)**  
**Purified Rabbit Polyclonal Antibody (Pab)**  
**Catalog # AP20885b****Specification**

---

**NDN Antibody (N-term) - Product Information**

Application	WB,E
Primary Accession	<a href="#">Q99608</a>
Reactivity	Human
Host	Rabbit
Clonality	Polyclonal
Isotype	Rabbit IgG
Calculated MW	36086

**NDN Antibody (N-term) - Additional Information****Gene ID** 4692**Other Names**

Necdin, NDN

**Target/Specificity**

This NDN antibody is generated from a rabbit immunized with a KLH conjugated synthetic peptide between 75-109 amino acids from the N-terminal region of human NDN.

**Dilution**

WB~~1:1000

**Format**

Purified polyclonal antibody supplied in PBS with 0.09% (W/V) sodium azide. This antibody is purified through a protein A column, followed by peptide affinity purification.

**Storage**

Maintain refrigerated at 2-8°C for up to 2 weeks. For long term storage store at -20°C in small aliquots to prevent freeze-thaw cycles.

**Precautions**

NDN Antibody (N-term) is for research use only and not for use in diagnostic or therapeutic procedures.

**NDN Antibody (N-term) - Protein Information****Name** NDN

**Function** Growth suppressor that facilitates the entry of the cell into cell cycle arrest. Functionally similar to the retinoblastoma protein it binds to and represses the activity of cell-cycle-promoting proteins such as SV40 large T antigen, adenovirus E1A, and the transcription factor E2F. Necdin also interacts with p53 and works in an additive manner to inhibit cell growth. Also functions as a

transcription factor and directly binds to specific guanosine-rich DNA sequences (By similarity).

#### Cellular Location

Perikaryon. Nucleus. Note=Neural perikarya, translocates to the nucleus of postmitotic neurons and interacts with the nuclear matrix

#### Tissue Location

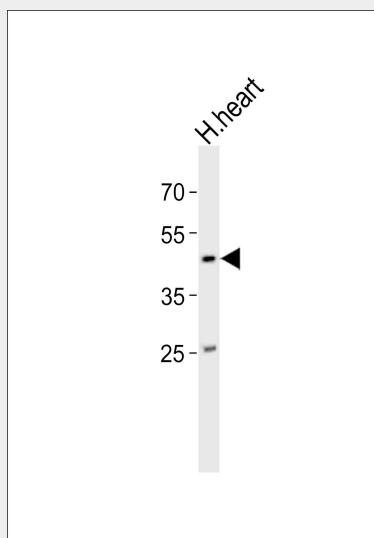
Almost ubiquitous. Detected in fetal brain, lung, liver and kidney; in adult heart, brain, placenta, lung, liver, skeletal muscle, kidney, pancreas, spleen, thymus, prostate, testis, ovary, small intestine and colon. Not detected in peripheral blood leukocytes. In brain, restricted to post-mitotic neurons

### NDN Antibody (N-term) - Protocols

Provided below are standard protocols that you may find useful for product applications.

- [Western Blot](#)
- [Blocking Peptides](#)
- [Dot Blot](#)
- [Immunohistochemistry](#)
- [Immunofluorescence](#)
- [Immunoprecipitation](#)
- [Flow Cytometry](#)
- [Cell Culture](#)

### NDN Antibody (N-term) - Images



Western blot analysis of lysate from human heart tissue lysate, using NDN Antibody (N-term)(Cat. #AP20885b). AP20885b was diluted at 1:1000. A goat anti-rabbit IgG H&L(HRP) at 1:10000 dilution was used as the secondary antibody. Lysate at 20ug.

### NDN Antibody (N-term) - Background

Growth suppressor that facilitates the entry of the cell into cell cycle arrest. Functionally similar to the retinoblastoma protein it binds to and represses the activity of cell-cycle- promoting proteins such as SV40 large T antigen, adenovirus E1A, and the transcription factor E2F. Necdin also interacts with p53 and works in an additive manner to inhibit cell growth. Functions also as

transcription factor and binds directly to specific guanosine-rich DNA sequences (By similarity).

#### **NDN Antibody (N-term) - References**

Jay P.,et al.Nat. Genet. 17:357-360(1997).  
Nakada Y.,et al.Gene 213:65-72(1998).  
Ota T.,et al.Nat. Genet. 36:40-45(2004).  
Beneduzzi D.,et al.Eur. J. Endocrinol. 165:145-150(2011).