

(Mouse) Ihh Antibody (C-term)
Purified Rabbit Polyclonal Antibody (Pab)
Catalog # AP20944c

Specification

(Mouse) Ihh Antibody (C-term) - Product Information

Application	WB,E
Primary Accession	P97812
Reactivity	Human, Rat
Host	Rabbit
Clonality	Polyclonal
Isotype	Rabbit IgG
Calculated MW	45485

(Mouse) Ihh Antibody (C-term) - Additional Information

Gene ID 16147

Other Names

Indian hedgehog protein, IHH, HHG-2, Indian hedgehog protein N-product, Indian hedgehog protein C-product, Ihh

Target/Specificity

This Mouse Ihh antibody is generated from a rabbit immunized with a KLH conjugated synthetic peptide between 397-430 amino acids from the C-terminal region of mouse Ihh.

Dilution

WB~~1:1000

Format

Purified polyclonal antibody supplied in PBS with 0.09% (W/V) sodium azide. This antibody is purified through a protein A column, followed by peptide affinity purification.

Storage

Maintain refrigerated at 2-8°C for up to 2 weeks. For long term storage store at -20°C in small aliquots to prevent freeze-thaw cycles.

Precautions

(Mouse) Ihh Antibody (C-term) is for research use only and not for use in diagnostic or therapeutic procedures.

(Mouse) Ihh Antibody (C-term) - Protein Information

Name Ihh {ECO:0000312|MGI:MGI:96533}

Function [Indian hedgehog protein]: The C-terminal part of the indian hedgehog protein precursor displays an autoproteolysis and a cholesterol transferase activity (By similarity). Both activities result in the cleavage of the full-length protein into two parts followed by the covalent attachment

of a cholesterol moiety to the C- terminal of the newly generated N-product (By similarity). Both activities occur in the reticulum endoplasmic (By similarity). Plays a role in hedgehog paracrine signaling. Associated with the very-low- density lipoprotein (VLDL) particles to function as a circulating morphogen for endothelial cell integrity maintenance (By similarity).

Cellular Location

[Indian hedgehog protein N-product]: Cell membrane {ECO:0000250|UniProtKB:Q14623}; Lipid-anchor {ECO:0000250|UniProtKB:Q62226}. Note=The N-product remains associated with the cell surface. {ECO:0000250|UniProtKB:Q15465}

Tissue Location

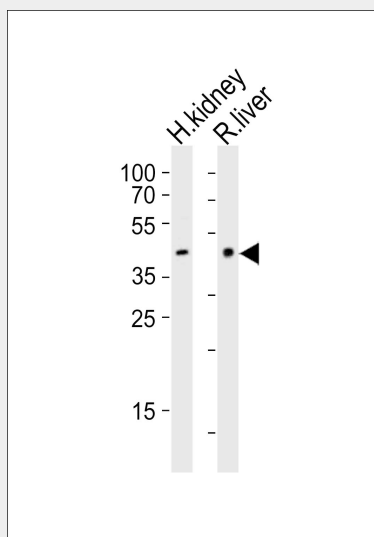
In the adult kidney, found in proximal convoluted and proximal straight tubule.

(Mouse) Ihh Antibody (C-term) - Protocols

Provided below are standard protocols that you may find useful for product applications.

- [Western Blot](#)
- [Blocking Peptides](#)
- [Dot Blot](#)
- [Immunohistochemistry](#)
- [Immunofluorescence](#)
- [Immunoprecipitation](#)
- [Flow Cytometry](#)
- [Cell Culture](#)

(Mouse) Ihh Antibody (C-term) - Images



Western blot analysis of lysates from human kidney and rat liver tissue (from left to right), using Ihh Antibody (C-term)(Cat. #AP20944c). AP20944c was diluted at 1:1000 at each lane. A goat anti-rabbit IgG H&L(HRP) at 1:10000 dilution was used as the secondary antibody. Lysates at 20ug per lane.

(Mouse) Ihh Antibody (C-term) - Background

Intercellular signal essential for a variety of patterning events during development. Binds to the patched (PTC) receptor, which functions in association with smoothened (SMO), to activate the

transcription of target genes. Implicated in endochondral ossification: may regulate the balance between growth and ossification of the developing bones. Induces the expression of parathyroid hormone-related protein (PTHrP).

(Mouse) Ihh Antibody (C-term) - References

Valentini R.P., et al. J. Biol. Chem. 272:8466-8473(1997).

Echelard Y., et al. Cell 75:1417-1430(1993).

St Jacques B., et al. Submitted (APR-1997) to the EMBL/GenBank/DDBJ databases.

Chang D.T., et al. Development 120:3339-3353(1994).