

**PCGF6 Antibody (C-term)**  
**Purified Rabbit Polyclonal Antibody (Pab)**  
**Catalog # AP20945c**

**Specification**

---

**PCGF6 Antibody (C-term) - Product Information**

Application	IF, WB,E
Primary Accession	<a href="#">Q9BYE7</a>
Reactivity	Human
Host	Rabbit
Clonality	Polyclonal
Isotype	Rabbit IgG
Calculated MW	39047

**PCGF6 Antibody (C-term) - Additional Information**

**Gene ID** 84108

**Other Names**

Polycomb group RING finger protein 6, Mel18 and Bmi1-like RING finger, RING finger protein 134, PCGF6, MBLR, RNF134

**Target/Specificity**

This PCGF6 antibody is generated from a rabbit immunized with a KLH conjugated synthetic peptide between 261-295 amino acids from the C-terminal region of human PCGF6.

**Dilution**

IF~~1:25

WB~~1:1000

**Format**

Purified polyclonal antibody supplied in PBS with 0.09% (W/V) sodium azide. This antibody is purified through a protein A column, followed by peptide affinity purification.

**Storage**

Maintain refrigerated at 2-8°C for up to 2 weeks. For long term storage store at -20°C in small aliquots to prevent freeze-thaw cycles.

**Precautions**

PCGF6 Antibody (C-term) is for research use only and not for use in diagnostic or therapeutic procedures.

**PCGF6 Antibody (C-term) - Protein Information**

**Name** PCGF6

**Synonyms** MBLR, RNF134

**Function** Transcriptional repressor (PubMed:[12167161](#)). May modulate the levels of histone H3K4Me3 by activating KDM5D histone demethylase (PubMed:[17320162](#)). Component of a Polycomb group (PcG) multiprotein PRC1-like complex, a complex class required to maintain the transcriptionally repressive state of many genes, including Hox genes, throughout development. PcG PRC1 complex acts via chromatin remodeling and modification of histones; it mediates monoubiquitination of histone H2A 'Lys-119', rendering chromatin heritably changed in its expressibility (PubMed:[12167161](#)). Within the PRC1-like complex, regulates RNF2 ubiquitin ligase activity (PubMed:[26151332](#)).

**Cellular Location**

Nucleus

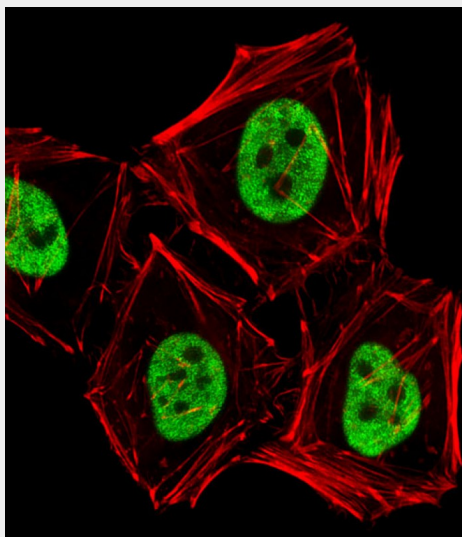
**Tissue Location**

Ubiquitous.

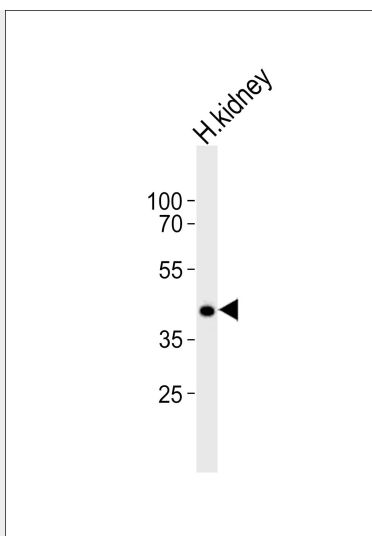
**PCGF6 Antibody (C-term) - Protocols**

Provided below are standard protocols that you may find useful for product applications.

- [Western Blot](#)
- [Blocking Peptides](#)
- [Dot Blot](#)
- [Immunohistochemistry](#)
- [Immunofluorescence](#)
- [Immunoprecipitation](#)
- [Flow Cytometry](#)
- [Cell Culture](#)

**PCGF6 Antibody (C-term) - Images**

Fluorescent image of HeLa cells stained with PCGF6 Antibody (C-term)(Cat#AP20945c). AP20945c was diluted at 1:25 dilution. An Alexa Fluor 488-conjugated goat anti-rabbit IgG at 1:400 dilution was used as the secondary antibody (green). Cytoplasmic actin was counterstained with Alexa Fluor® 555 conjugated with Phalloidin (red).



Western blot analysis of lysate from human kidney tissue, using PCGF6 Antibody (C-term)(Cat. #AP20945c). AP20945c was diluted at 1:1000. A goat anti-rabbit IgG H&L(HRP) at 1:10000 dilution was used as the secondary antibody. Lysate at 20ug.

#### **PCGF6 Antibody (C-term) - Background**

Transcriptional repressor. May modulate the levels of histone H3K4Me3 by activating KDM5D histone demethylase. Component of a Polycomb group (PcG) multiprotein PRC1-like complex, a complex class required to maintain the transcriptionally repressive state of many genes, including Hox genes, throughout development. PcG PRC1 complex acts via chromatin remodeling and modification of histones; it mediates monoubiquitination of histone H2A 'Lys-119', rendering chromatin heritably changed in its expressibility.

#### **PCGF6 Antibody (C-term) - References**

Akasaka T.,et al.Genes Cells 7:835-850(2002).  
Ota T.,et al.Nat. Genet. 36:40-45(2004).  
Deloukas P.,et al.Nature 429:375-381(2004).  
Lee M.G.,et al.Cell 128:877-887(2007).  
Maertens G.N.,et al.PLoS ONE 4:E6380-E6380(2009).