

MIXL1 Antibody (C-term)
Purified Rabbit Polyclonal Antibody (Pab)
Catalog # AP21011c

Specification

MIXL1 Antibody (C-term) - Product Information

Application	WB,E
Primary Accession	Q9H2W2
Reactivity	Human, Mouse
Host	Rabbit
Clonality	Polyclonal
Isotype	Rabbit IgG
Calculated MW	24659

MIXL1 Antibody (C-term) - Additional Information

Gene ID 83881

Other Names

Homeobox protein MIXL1, Homeodomain protein MIX, hMix, MIX1 homeobox-like protein 1, Mix1 homeobox-like protein, MIXL1, MIXL

Target/Specificity

This MIXL1 antibody is generated from a rabbit immunized with a KLH conjugated synthetic peptide between 183-218 amino acids from the C-terminal region of human MIXL1.

Dilution

WB~~1:500-1:1000

Storage

Maintain refrigerated at 2-8°C for up to 2 weeks. For long term storage store at -20°C in small aliquots to prevent freeze-thaw cycles.

Precautions

MIXL1 Antibody (C-term) is for research use only and not for use in diagnostic or therapeutic procedures.

MIXL1 Antibody (C-term) - Protein Information

Name MIXL1

Synonyms MIXL

Function Transcription factor that play a central role in proper axial mesendoderm morphogenesis and endoderm formation. Required for efficient differentiation of cells from the primitive streak stage to blood, by acting early in the recruitment and/or expansion of mesodermal progenitors to the hemangioblastic and hematopoietic lineages. Also involved in the morphogenesis of the heart and the gut during embryogenesis. Acts as a negative regulator of

brachyury expression (By similarity).

Cellular Location

Nucleus {ECO:0000255|PROSITE-ProRule:PRU00108, ECO:0000269|PubMed:12070013, ECO:0000269|PubMed:17303500}

Tissue Location

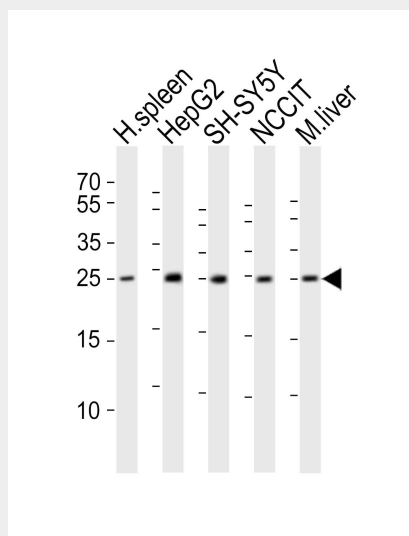
Restricted to progenitors and secondary lymph tissues. In normal hematopoiesis, it is restricted to immature B- and T-lymphoid cells. Present in differentiating embryonic stem cells (at protein level).

MIXL1 Antibody (C-term) - Protocols

Provided below are standard protocols that you may find useful for product applications.

- [Western Blot](#)
- [Blocking Peptides](#)
- [Dot Blot](#)
- [Immunohistochemistry](#)
- [Immunofluorescence](#)
- [Immunoprecipitation](#)
- [Flow Cytometry](#)
- [Cell Culture](#)

MIXL1 Antibody (C-term) - Images



Western blot analysis of lysates from human spleen tissue lysate, HepG2, SH-SY5Y, NCCIT cell line, mouse liver tissue lysate (from left to right), using MIXL1 Antibody (C-term)(Cat. #AP21011c). AP21011c was diluted at 1:1000 at each lane. A goat anti-rabbit IgG H&L(HRP) at 1:10000 dilution was used as the secondary antibody. Lysates at 20ug per lane.

MIXL1 Antibody (C-term) - Background

Transcription factor that play a central role in proper axial mesendoderm morphogenesis and endoderm formation. Required for efficient differentiation of cells from the primitive streak stage to blood, by acting early in the recruitment and/or expansion of mesodermal progenitors to the hemangioblastic and hematopoietic lineages. Also involved in the morphogenesis of the heart and

the gut during embryogenesis. Acts as a negative regulator of brachyury [removed]By similarity).

MIXL1 Antibody (C-term) - References

Guo W.,et al.Blood 100:89-95(2002).

Robb L.,et al.Dev. Dyn. 219:497-504(2000).

Gregory S.G.,et al.Nature 441:315-321(2006).

Mural R.J.,et al.Submitted (JUL-2005) to the EMBL/GenBank/DDBJ databases.

Mossman A.K.,et al.Stem Cells Dev. 14:656-663(2005).